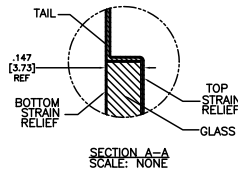
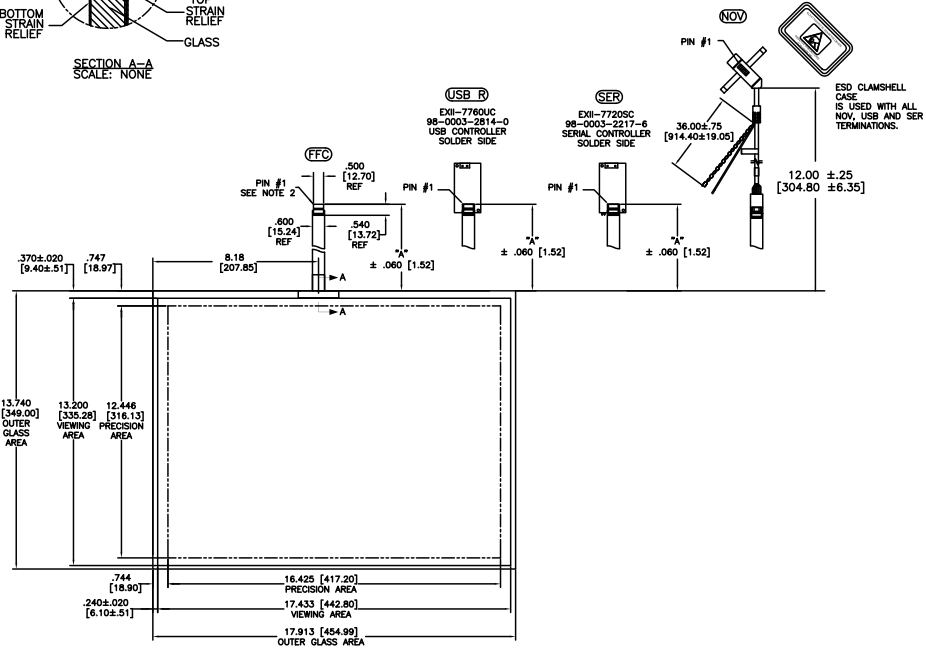


OGA DIAGONAL: 22.58 [573.42]  
 VA DIAGONAL: 21.87 [555.41]  
 PA DIAGONAL: 20.61 [523.44]

TOP LEVEL NUMBER	SKU 98 NUMBER	TYPE	DM "A" (TOTAL GLASS TO CONNECTOR)	A/G FINISH	PROD SPEC
17-8541-203	98-0003-2618-9	FFC	4.27" [108.46]	AG500	23655
17-8541-221	98-0003-2620-1	SER	4.27" [108.46]	AG500	23655
17-8541-206	98-0003-2618-5	NOV	SEE DWG	AG500	23655
17-8541-204	98-0003-3158-1	FFC	6.00" [152.40]	AG500	23655
17-8541-223	98-0003-2199-6	SER	6.00" [152.40]	AG500	23655
17-8541-205	98-0003-2617-7	FFC	8.00" [203.20]	AG500	23655
17-8541-227	98-0003-2621-9	SER	8.00" [203.20]	AG500	23655
17-8541-218	98-0003-3159-9	USB R	4.27" [108.46]	AG500	23655
17-8541-220	98-0003-3160-7	USB R	6.00" [152.40]	AG500	23655
17-8541-226	98-0003-3162-3	USB R	8.00" [203.20]	AG500	23655



.147±.020 [3.73±.51]  
 TOTAL THICKNESS  
 OF GLASS, CABLE  
 AND STRAIN RELIEF



- NOTES:
- WEIGHT OF GLASS IN GRAMS: 1210±10%
  - 5 PIN AMP CONNECTOR
  - LATCH STYLE HOUSING P/N: 487526-4
  - TIN CONTACTS P/N: 2-487406-4
  - HOUSING ORIENTED WITH LATCH DOWN

PINOUT	
1	LL
2	UL
3	SHLD
4	UR
5	LR

UNITS	INCHES [MM]
TOLERANCES UNLESS OTHERWISE SPECIFIED	
.X	±
.XX	±.03 [.76]
.XXX	±.015 [.38]
ANGLES	±1°

**3M** 3M TOUCH SYSTEMS  
 METHUEN, MA  
 USA

THIS DOCUMENT IS COPYRIGHTED PROPERTY OF THE 3M COMPANY AND MAY NOT BE REPRODUCED WITHOUT 3M WRITTEN PERMISSION OR USED OR DISCLOSED FOR OTHER THAN 3M AUTHORIZED PURPOSES.

DATE: 9/05  
 DRAWN: K CROWLEY

REV	CHANGE NOTICE	DATE	BY
05	REVISED PER CO 030452	5/09	SB
04	REVISED PER CO 028687	2/08	ACM
03	REVISED PER CO 028528	1/08	AH

MARKETING DRAWING  
 SCT32NN 21.87"

DATE: 9/05  
 DRAWN: K CROWLEY  
 SHEET: 1 OF 1  
 DOCUMENT NO.: 28423-MKT  
 REV: 05