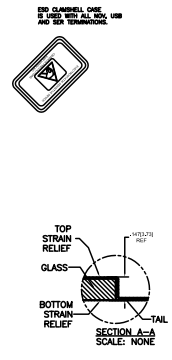
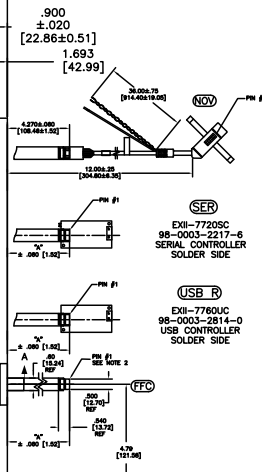
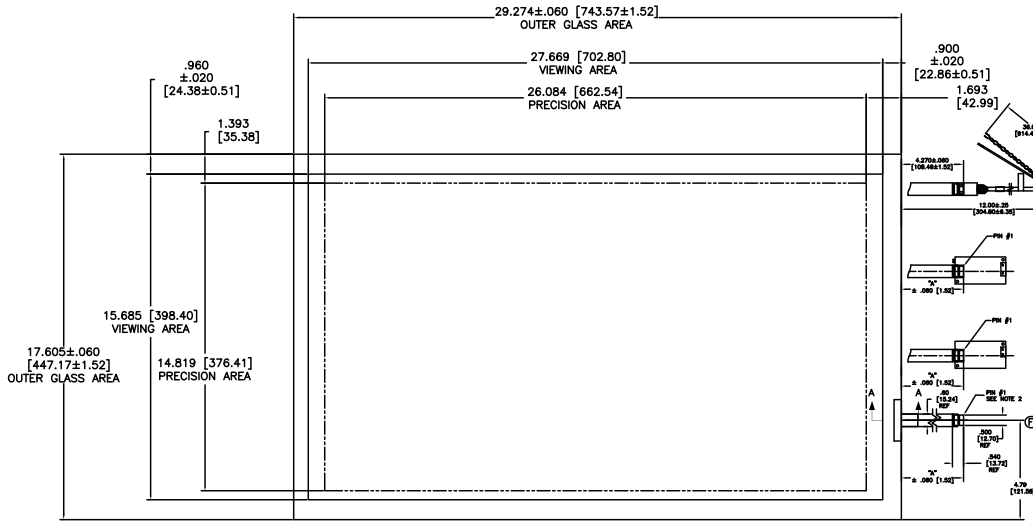


OGA DIAG 34.16 [867.67]
 VA DIAG 31.81 [807.87]
 PA DIAG 30.00 [762.00]

TOP LEVEL NUMBER	SKU 98 NUMBER	TYPE	DIM 'A' (TOTAL GLASS TO CONNECTOR)	A/G FINISH	PROD SPEC
17-8951-205	98-0003-2678-9	FFC	8.00" [203.20]	AG500	23655
17-8951-227	98-0003-2681-3	SER	8.00" [203.20]	AG500	23655
17-8951-206	98-0003-2679-7	NOV	SEE DWG	AG500	23655
17-8951-226	98-0003-3029-4	USB R	8.00" [203.20]	AG500	23655



.147±.020 [3.73±.51]
 TOTAL THICKNESS
 OF GLASS, CABLE
 AND STRAIN RELIEF

REV	CHANGE NOTICE	DATE	BY
06	REVISED PER CO 030452	6/09	SB
05	REVISED PER CO 028687	2/08	ACM
04	REVISED PER CO 028794	3/25/08	SB

- NOTES:
- WEIGHT OF GLASS IN GRAMS: 2533±10%
 - 5 PIN AMP CONNECTOR
 LATCH STYLE HOUSING P/N: 487526-4
 TIN CONTACTS P/N: 2-487406-4
 HOUSING ORIENTED WITH LATCH DOWN

PINOUT	
1	UL
2	UR
3	SHLD
4	LR
5	LL

UNITS: INCHES [MM]

TOLERANCES UNLESS OTHERWISE SPECIFIED:
 .X ±
 .XX ±.03 [.76]
 .XXX ±.015 [.38]
 ANGLES ±1'

THIRD ANGLE PROJECTION

DO NOT SCALE DRAWING

SCALE: 1 = 1

3M 3M TOUCH SYSTEMS
 METHUEN, MA
 USA

THIS DOCUMENT IS COPYRIGHTED PROPERTY OF THE 3M COMPANY AND MAY NOT BE REPRODUCED WITHOUT 3M WRITTEN PERMISSION OR USED OR DISCLOSED FOR OTHER THAN AUTHORIZED PURPOSES.

DRAWN: K.CROWLEY 01/06

DATE: 01/06

SIZE: 28436-MKT

REV: 06

TITLE: MARKETING DRAWING
 SCT32NN 31.81" W

DATE: 01/06

BY: SB

CHECKED: AC

APPROVED: SB

DATE: 01/06

SCALE: 1 = 1

SIZE: 28436-MKT

REV: 06