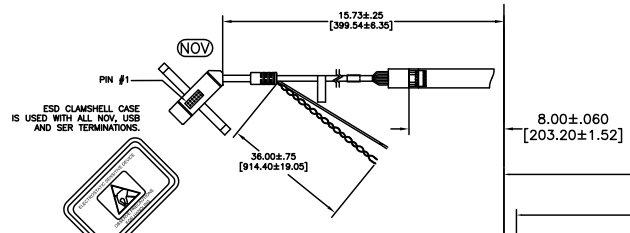


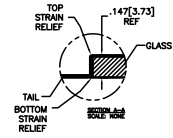
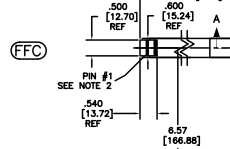
OGA DIAGONAL: 24.82 [630.48]  
 VA DIAGONAL: 23.83 [605.19]  
 PA DIAGONAL: 22.45 [570.18]

TOP LEVEL NUMBER	SKU 98 NUMBER	TYPE	DIM "A" (TOTAL GLASS TO CONNECTOR)	A/G FINISH	PROD SPEC
17-9051-205	98-0003-2687-0	FFC	8.00" [203.20]	AG500	23655
17-9051-227	98-0003-2689-6	SER	8.00" [203.20]	AG500	23655
17-9051-206	98-0003-2688-8	NOV	SEE DWG	AG500	23655
17-9051-226	98-0003-3035-1	USB R	8.00" [203.20]	AG500	23655



**(SER)**  
 EXII-7720SC  
 98-0003-2217-6  
 SERIAL CONTROLLER  
 SOLDER SIDE

**(USB R)**  
 EXII-7760UC  
 98-0003-2814-0  
 USB CONTROLLER  
 SOLDER SIDE



.147±.020 [3.73±.51]  
 TOTAL THICKNESS  
 OF GLASS, CABLE  
 AND STRAIN RELIEF

.125 [3.18] REF

06	REVISED PER CO 030452	6/09	SB
05	REVISED PER CO 028687	2/08	ACM
04	REVISED PER CO 028662	1/22/07	SB

- NOTES:
- WEIGHT OF GLASS IN GRAMS: 1248±10%
  - 5 PIN AMP CONNECTOR LATCH STYLE HOUSING P/N: 487526-4  
 TIN CONTACTS P/N: 2-487406-4  
 HOUSING ORIENTED WITH LATCH DOWN

PINOUT	
1	LR
2	LL
3	SHLD
4	UL
5	UR

UNITS: INCHES [MM]

TOLERANCES UNLESS OTHERWISE SPECIFIED:  
 .X ±  
 .XX ±.03 [.76]  
 .XXX ±.015 [.38]  
 ANGLES ±1°

THIRD ANGLE PROJECTION

DO NOT SCALE DRAWING  
 SCALE: 1 = 1

**3M** 3M TOUCH SYSTEMS  
 METHUEN, MA  
 USA

THIS DOCUMENT IS COPYRIGHTED PROPERTY OF THE 3M COMPANY AND MAY NOT BE REPRODUCED WITHOUT 3M WRITTEN PERMISSION OR USED OR DISCLOSED FOR OTHER THAN 3M AUTHORIZED PURPOSES.

DRAWN: MTD 03/16/06  
 DATE: 03/16/06

TITLE: MARKETING DRAWING  
 SCT32NN 23.83" W

DATE: 03/16/06  
 SHEET: 1 OF 1

DOCUMENT NO.: 31379-MKT  
 REV: 06