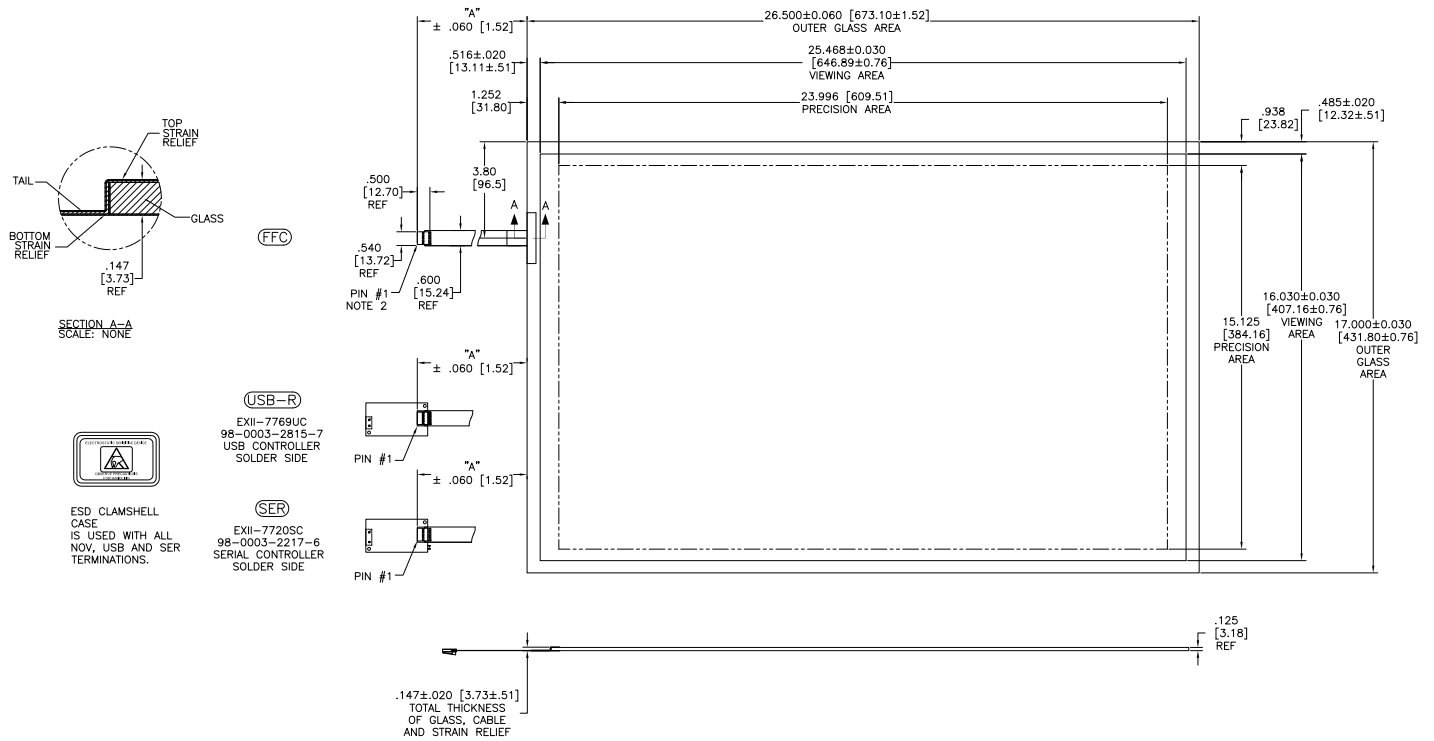


OGA DIAGONAL: 31.48 [799.7]
 VA DIAGONAL: 30.09 [764.4]
 PA DIAGONAL: 28.37 [720.5]

TOP LEVEL NUMBER	TYPE	DIM "A" (TOTAL GLASS TO CONNECTOR)	A/G FINISH	PROD SPEC
98-0003-3481-7	FFC	8.00" [203.20]	AG500	23655
98-0003-3480-9	SER	8.00" [203.20]	AG500	23655
98-0003-3479-1	USB-R	8.00" [203.20]	AG500	23655



NOTES:

1. WEIGHT OF GLASS IN GRAMS: 2214±10%
2. 5 PIN AMP CONNECTOR LATCH STYLE HOUSING P/N: 487526-4
 TIN CONTACTS P/N: 2-487406-4
 HOUSING ORIENTED WITH LATCH DOWN

PINOUT	
1	LR
2	LL
3	SHLD
4	UL
5	UR

UNITS: INCHES [MM]
 TOLERANCES UNLESS OTHERWISE SPECIFIED:
 .X ±
 .XX ±0.3 [.76]
 .XXX ±0.015 [.38]
 ANGLES ±1°

THIRD ANGLE PROJECTION

DO NOT SCALE DRAWING

SCALE: 1 = 1

3M 3M TOUCH SYSTEMS
 METUEN, MA
 USA

© COPYRIGHT 2004
 THIS DOCUMENT IS COPYRIGHTED PROPERTY OF THE 3M COMPANY AND MAY NOT BE REPRODUCED WITHOUT 3M WRITTEN PERMISSION OR USED OR EXPLOITED FOR OTHER THAN 3M AUTHORIZED PURPOSES.

REV	CHANGE NOTICE	DATE	BY
01	RELEASE PER CO 030786	8/09	AH

TITLE: MARKETING DRAWING
 SCT32NN 30.09" W

CAD FORMAT: AUTOCAD SHEET: 1 OF 1

SIZE: C DOCUMENT NO: 37298-MKT REV: 01