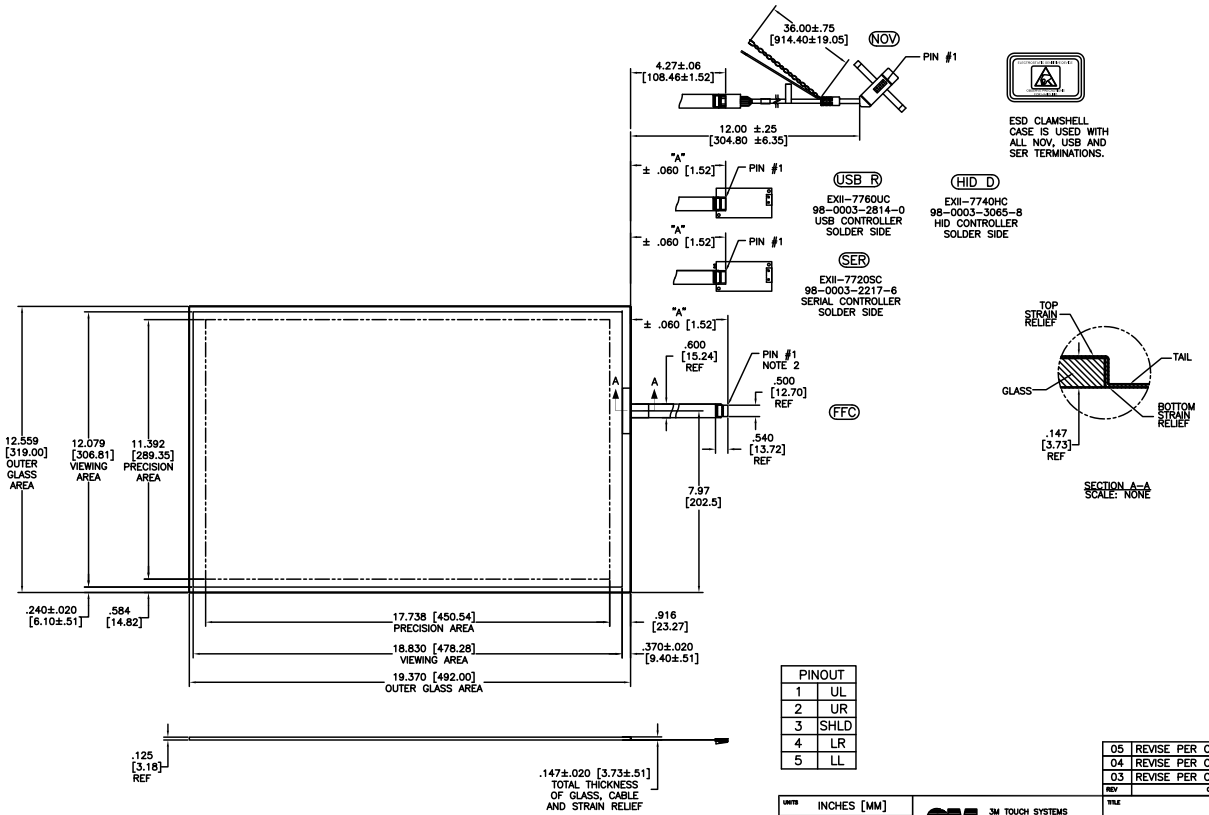


OGA DIAGONAL: 23.09 [586.4]  
 VA DIAGONAL: 22.37 [568.2]  
 PA DIAGONAL: 21.08 [535.5]

TOP LEVEL NUMBER	SKU 98 NUMBER	TYPE	DM "A" (TOTAL GLASS TO CONNECTOR)	A/G FINISH	PROD SPEC
17-9311-205	98-0003-2209-3	FFC	8.00" [203.20]	AG500	23655
17-9311-206	98-0003-2731-6	NOV	SEE DWG	AG500	23655
17-9311-227	98-0003-2734-0	SER	8.00" [203.20]	AG500	23655
17-9311-226	98-0003-3052-6	USB R	8.00" [203.20]	AG500	23655
N/A	98-0003-3652-3	HID D	8.00" [203.20]	AG500	23655
N/A	98-0003-3420-5	FFC	8.00" [203.20]	WC100	34523
N/A	98-0003-3418-9	SER	8.00" [203.20]	WC100	34523
N/A	98-0003-3419-7	USB R	8.00" [203.20]	WC100	34523



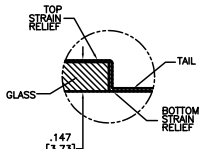
ESD CLAMSHELL CASE IS USED WITH ALL NOV, USB AND SER TERMINATIONS.

(USB R)  
 EXII-7760UC  
 98-0003-2814-0  
 USB CONTROLLER  
 SOLDER SIDE

(HID D)  
 EXII-7740HC  
 98-0003-3065-8  
 HID CONTROLLER  
 SOLDER SIDE

(SER)  
 EXII-7720SC  
 98-0003-2217-6  
 SERIAL CONTROLLER  
 SOLDER SIDE

(FFC)



SECTION A-A  
 SCALE: NONE

PINOUT	
1	UL
2	UR
3	SHLD
4	LR
5	LL

REV	CHANGE NOTICE	DATE	DRW
05	REVISE PER CO 032175	10/10	SB
04	REVISE PER CO 031906	7/10	SB
03	REVISE PER CO 030452	6/09	SB

**3M** 3M TOUCH SYSTEMS  
 WETUEN, MA  
 USA

THIS DOCUMENT IS COPYRIGHTED PROPERTY OF THE 3M COMPANY AND MAY NOT BE REPRODUCED WITHOUT 3M WRITTEN PERMISSION OR USED OR DISCLOSED FOR OTHER THAN AUTHORIZED PURPOSES.

DATE: 4/07  
 DRAWN: AH  
 CHECKED: AUTOCAD  
 SHEET: 1 OF 1

DOCUMENT NO. 34079-MKT  
 REV 05

MARKETING DRAWING  
 SCT32NN 22.37" W

- NOTES:
1. WEIGHT OF GLASS IN GRAMS: 1196±10%
  2. 5 PIN AMP CONNECTOR LATCH STYLE HOUSING P/N: 487526-4  
 TIN CONTACTS P/N: 2-487406-4  
 HOUSING ORIENTED WITH LATCH DOWN

SCALE 1 = 1