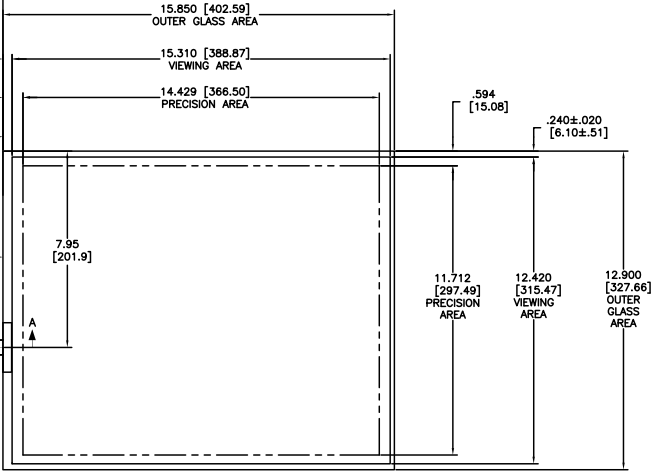
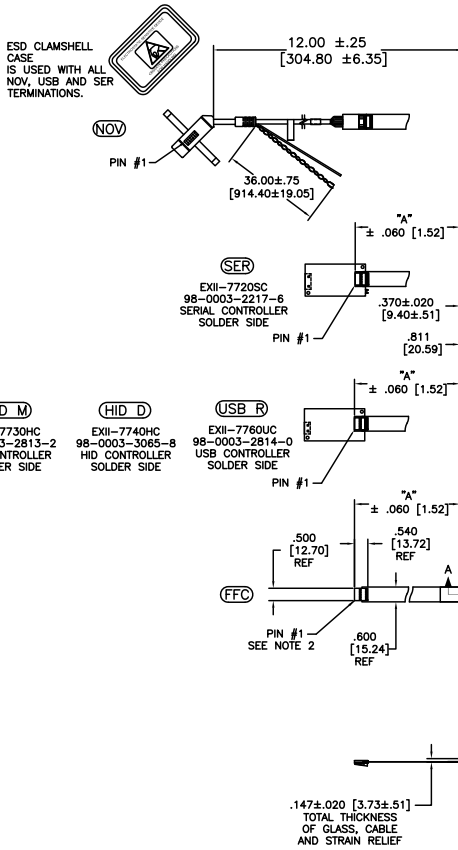


OGA DIAGONAL: 20.44 [519.08]
 VA DIAGONAL: 19.71 [500.74]
 PA DIAGONAL: 18.58 [472.03]

TOP LEVEL NUMBER	SKU 98 NUMBER	TYPE	DM "A" (TOTAL GLASS TO CONNECTOR)	A/G FINISH	PROD SPEC
17-8051-203	98-0003-2532-8	FFC	4.27" [108.46]	AG500	23655
17-8051-205	98-0003-2185-5	FFC	8.00" [203.20]	AG500	23655
17-8051-206	98-0003-2186-3	NOV	SEE DWG	AG500	23655
17-8051-221	98-0003-2537-7	SER	4.27" [108.46]	AG500	23655
17-8051-227	98-0003-2927-0	SER	8.00" [203.20]	AG500	23655
17-8051-218	98-0003-2535-1	USB R	4.27" [108.46]	AG500	23655
17-8051-226	98-0003-3114-4	USB R	8.00" [203.20]	AG500	23655
N/A	98-0003-3535-0	HID D	8.00" [203.20]	AG500	23655
N/A	98-0003-3199-5	HID M	8.00" [203.20]	AG500	23655
N/A	98-0003-3413-0	SER	6.00" [152.40]	AG500	23655
N/A	98-0003-3421-3	SER	6.00" [152.40]	WC100	34523
N/A	98-0003-3422-1	USB	6.00" [152.40]	WC100	34523
N/A	98-0003-3423-9	FFC	6.00" [152.40]	WC100	34523



- NOTES:**
1. WEIGHT OF GLASS IN GRAMS: 1005±10%
 2. 5 PIN AMP CONNECTOR LATCH STYLE HOUSING P/N: 487526-4 TIN CONTACTS P/N: 2-487406-4 HOUSING ORIENTED WITH LATCH DOWN

PINOUT	
1	LR
2	LL
3	SHIELD
4	UL
5	UR

UNIT	INCHES [MM]
TOLERANCES UNLESS OTHERWISE SPECIFIED	
.X	±
.XX	±.03 [.76]
.XXX	±.015 [.38]
ANGLES	±1°

3M 3M TOUCH SYSTEMS
 METHUEN, MA
 USA

THIS DOCUMENT IS COPYRIGHTED PROPERTY OF THE 3M COMPANY AND MAY NOT BE REPRODUCED WITHOUT 3M WRITTEN PERMISSION OR USED OR DISCLOSED FOR OTHER THAN 3M AUTHORIZED PURPOSES.

DATE: 9/05
 DRAWN: K. CROWLEY

REV	CHANGE NOTICE	DATE	BY
10	REVISED PER CO 031907	7/10	SB
09	REVISED PER CO 031876	7/10	SB
08	REVISED PER CO 031738	6/10	MTD

MARKETING DRAWING
 SCT32NN 19.71"

SCALE: 1 = 1

DOC FORMAT: AUTOCAD SHEET: 1 OF 1

REV: 10