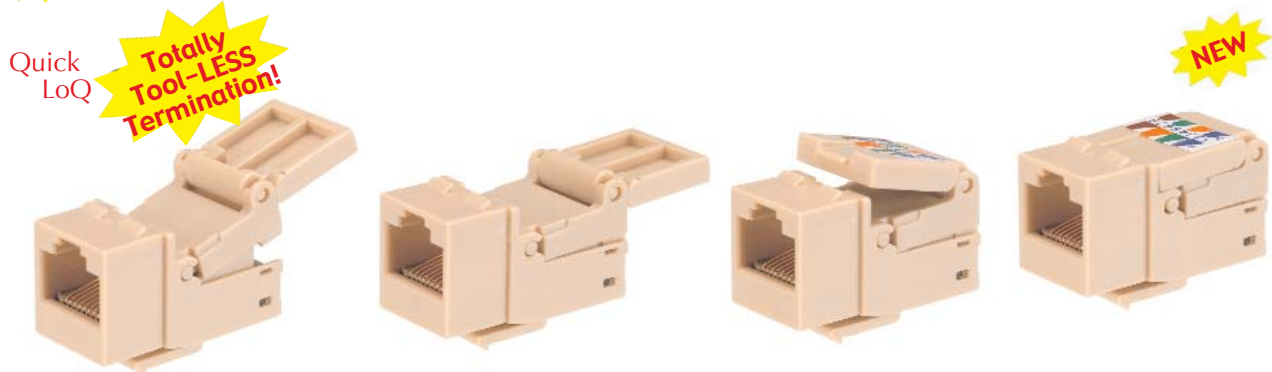


NEW KEYSTONE DATACOM JACKS (Cont.)—QUICK LOQ SERIES



Self-crimping/Tool-less

Quick LoQ Tool-less Keystone Inserts allow you to quickly connect Cat 3/4, 5e, and 6 wire to their respective Jacks. (See connection stages below.) Simply cut away the outer sheath, separate the colored inner wires, align to their proper pin (noted in package), using thumb and fingers clamp upper closure down upon wires. No need to strip wires, thus saving in time.

Quick LoQ Cat 3/4 Jacks

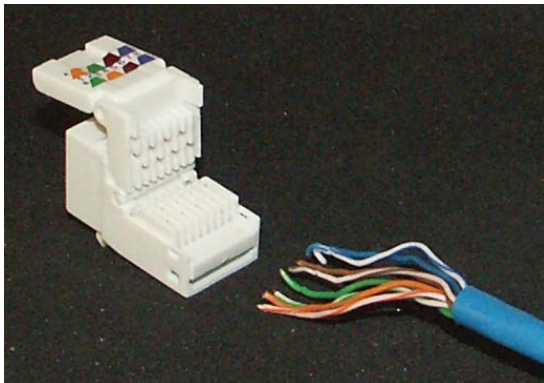
| Retail Part No. | Bulk Part No. | Color |
|-----------------|---------------|------------|
| 45-5530 | 45-5530-BU | Black |
| 45-5531 | 45-5531-BU | Lt. Almond |
| 45-5532 | 45-5532-BU | Red |
| 45-5533 | 45-5533-BU | Orange |
| 45-5534 | 45-5534-BU | Yellow |
| 45-5535 | 45-5535-BU | Green |
| 45-5536 | 45-5536-BU | Blue |
| 45-5537 | 45-5537-BU | Ivory |
| 45-5538 | 45-5538-BU | Gray |
| 45-5539 | 45-5539-BU | White |

Quick LoQ Cat 5e Jacks

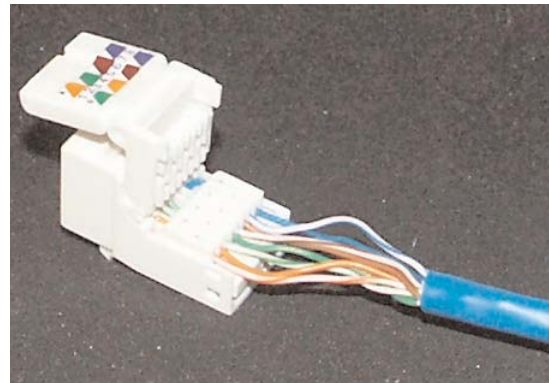
| Retail Part No. | Bulk Part No. | Color |
|-----------------|---------------|------------|
| 45-5500 | 45-5500-BU | Black |
| 45-5501 | 45-5501-BU | Lt. Almond |
| 45-5502 | 45-5502-BU | Red |
| 45-5503 | 45-5503-BU | Orange |
| 45-5504 | 45-5504-BU | Yellow |
| 45-5505 | 45-5505-BU | Green |
| 45-5506 | 45-5506-BU | Blue |
| 45-5507 | 45-5507-BU | Ivory |
| 45-5508 | 45-5508-BU | Gray |
| 45-5509 | 45-5509-BU | White |

Quick LoQ Cat 6 Jacks

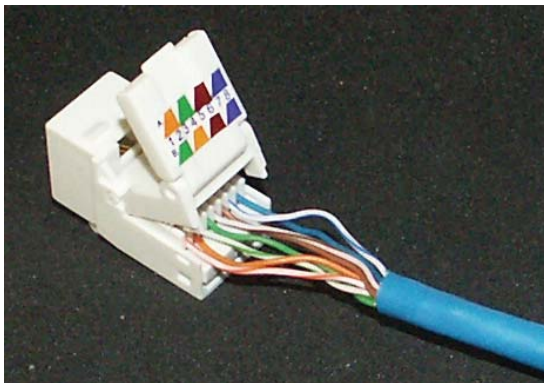
| Retail Part No. | Bulk Part No. | Color |
|-----------------|---------------|------------|
| 45-5520 | 45-5520-BU | Black |
| 45-5521 | 45-5521-BU | Lt. Almond |
| 45-5522 | 45-5522-BU | Red |
| 45-5523 | 45-5523-BU | Orange |
| 45-5524 | 45-5524-BU | Yellow |
| 45-5525 | 45-5525-BU | Green |
| 45-5526 | 45-5526-BU | Blue |
| 45-5527 | 45-5527-BU | Ivory |
| 45-5528 | 45-5528-BU | Gray |
| 45-5529 | 45-5529-BU | White |



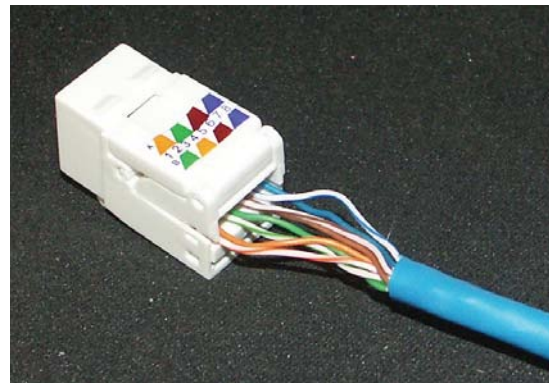
Quick LoQ Step 1



Quick LoQ Step 2



Quick LoQ Step 3



Quick LoQ Step 4

For the latest information – www.gcelectronics.com
All quantities are single; BU's are packages of 10 Unless otherwise noted.