

4

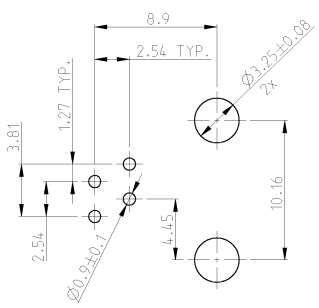
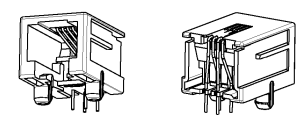
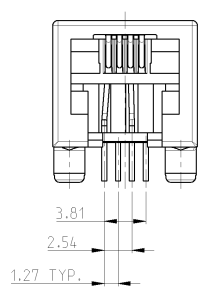
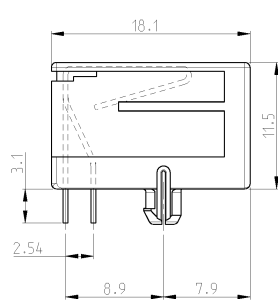
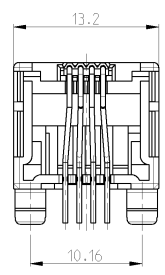
3

2

1

THIS DRAWING IS UNPUBLISHED. RELEASED FOR PUBLICATION BY TICO ELECTRONICS CORPORATION. ALL RIGHTS RESERVED. 2000

- 1 SEE SHEET 1 FOR MODULAR JACK 6 POS./6 CONTACTS.
- 2 FOR APPLICATION INFORMATION SEE AMP SPEC. 114-19019.
- 3 FOR PERFORMANCE REQUIREMENT SEE AMP SPEC. 108-19064.
- 4 TOLERANCES UNLESS OTHERWISE SPECIFIED:  $\pm 0,15$ .



PRINTED CIRCUIT BOARD LAYOUT (6 POS./4 CONTACT)  
 (VIEW SHOWN IS CIRCUIT (NON-COMPONENT) SIDE OF BOARD)  
 PRINTED CIRCUIT BOARD THICKNESS: 1.6mm NOMINAL.  
 TOLERANCES UNLESS OTHERWISE SPECIFIED:  $\pm 0.05$ .

REV.	DATE	BY	DESCRIPTION	DATE	BY	APPROV.
-	-	-	SEE SHEET 1	-	-	-

TAPE MOUNTED 800 PCS/REEL	6 POS./ 4 CONTACTS	IN CONTACT AREA: 1.2 $\mu$ m MIN. SEL. GOLD OVER 1.2 $\mu$ m MIN. NICKEL  SOLDER FINISH: 2.5 $\mu$ m MIN. TIN OVER 1.2 $\mu$ m MIN. NICKEL	HOUSING COLOR BLACK: PBT, UL 94 V-0  CONTACT INSERT: PBT, UL 94 V-0  CONTACTS: PH-BRONZE	215876-2
PACKAGING	REMARKS SUPERSEDED BY 215876-2	FINISH	MATERIAL	P/N 1 215876 2
DIMENSIONS: mm		DRAWN G.CONSTANT 24 SEP 96		Tico Electronics Nederland B.V. 's-Heerengenbosch, The Netherlands MODULAR JACK, SIDE ENTRY, 6/4 FOR PRINTED CIRCUIT BOARD
0 PLC 1 PLC 2 PLC 3 PLC 4 PLC 5 PLC 6 PLC ANGLES FINISH		CHECKED G.CONSTANT 24 SEP 96 APPROVED B.SMEETS PRODUCT SPEC. 108-19064 APPLICATION SPEC. 114-19019 WEIGHT CUSTOMER DRAWING		
MATERIAL		SIZE CASE CODE DRAWING NO		RESTRICTED TO
SCALE 4:1		A 2 100779 215876		REV 7

4

3

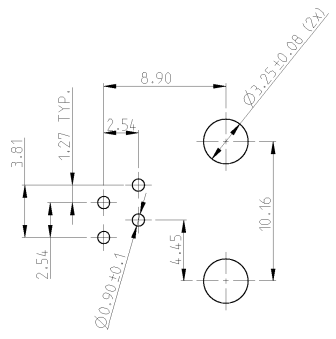
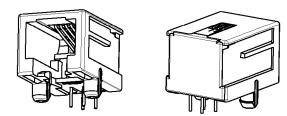
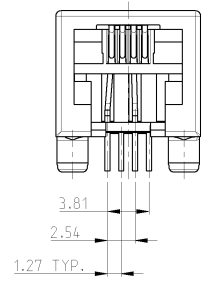
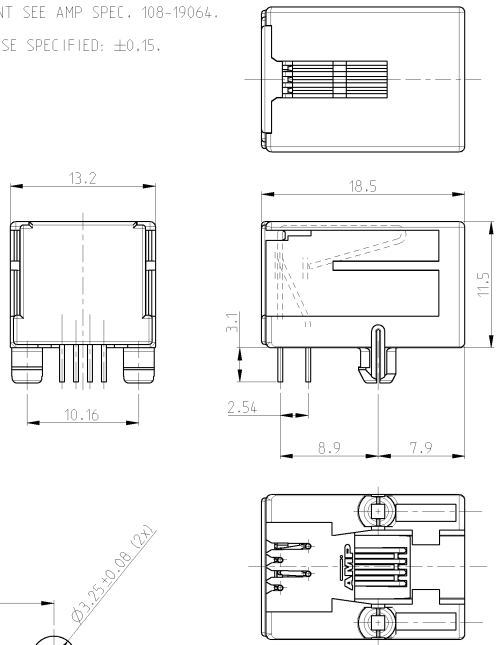
2

1

THIS DRAWING IS UNPUBLISHED. RELEASED FOR PUBLICATION 2000  
BY TICO ELECTRONICS CORPORATION. ALL RIGHTS RESERVED.

REV	DATE	BY	CHKD	DESCRIPTION
1	-	-	-	SEE SHEET 1

- 1 SEE SHEET 3 FOR MODULAR JACK 6 POS./6 CONTACTS WITH CONTACT COVER.
- 2 FOR APPLICATION INFORMATION SEE AMP SPEC. 114-19019.
- 3 FOR PERFORMANCE REQUIREMENT SEE AMP SPEC. 108-19064.
- 4 TOLERANCES UNLESS OTHERWISE SPECIFIED:  $\pm 0,15$ .



PRINTED CIRCUIT BOARD LAYOUT (6 POS./4 CONTACT)  
 (VIEW SHOWN IS CIRCUIT (NON-COMPONENT) SIDE OF BOARD)  
 PRINTED CIRCUIT BOARD THICKNESS: 1.6mm NOMINAL.  
 TOLERANCES UNLESS OTHERWISE SPECIFIED:  $\pm 0.05$ .

PACKAGING	REMARKS	FINISH	MATERIAL	P/N
TAPE MOUNTED 800 PCS/REEL	6 POS./ 4 CONTACTS	IN CONTACT AREA: 1.2 $\mu$ m MIN. SEL. GOLD OVER 1.2 $\mu$ m MIN. NICKEL  SOLDER TINES: 2.5 $\mu$ m MIN. TIN OVER 1.2 $\mu$ m MIN. NICKEL	HOUSING COLOR BLACK PBT, UL94 V-0  CONTACT INSERT: PBT, UL94 V-0  CONTACT COVER: PBT, UL94 V-0  CONTACTS: PH-BRONZE	5-215876-2
<small>DATE: 10-01-05 BY: E. Willems CHKD: E. Willems APPV: J. Broukhuizen</small>		<small>DATE: 10-01-05 BY: E. Willems CHKD: E. Willems APPV: J. Broukhuizen</small>	<small>DATE: 10-01-05 BY: E. Willems CHKD: E. Willems APPV: J. Broukhuizen</small>	<small>DATE: 10-01-05 BY: E. Willems CHKD: E. Willems APPV: J. Broukhuizen</small>
<small>DIMENSIONS: min</small>		<small>0 PLC 1 PLC 2 PLC 3 PLC 4 PLC 5 PLC ANGLES</small>	<small>DATE: 10-01-05 BY: E. Willems CHKD: E. Willems APPV: J. Broukhuizen</small>	<small>DATE: 10-01-05 BY: E. Willems CHKD: E. Willems APPV: J. Broukhuizen</small>
<small>MATERIAL</small>		<small>FINISH</small>	<small>SCALE: 4:1</small>	<small>SHEET 4 OF 6 REV 7</small>

4

3

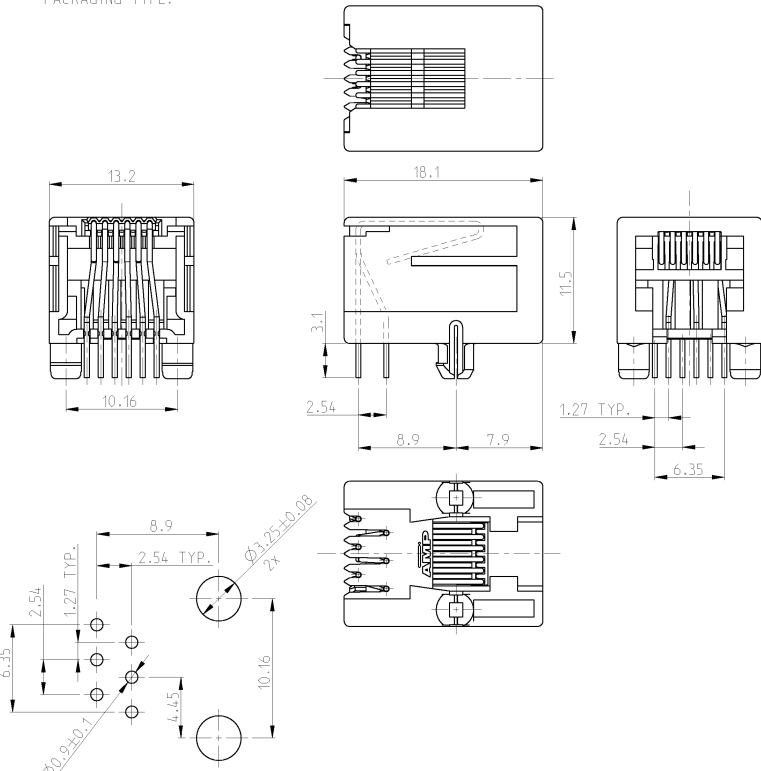
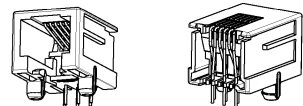
2

1

THIS DRAWING IS UNPUBLISHED. RELEASED FOR PUBLICATION 2000  
 (C) COPYRIGHT 2000 BY TYCO ELECTRONICS CORPORATION. ALL RIGHTS RESERVED.

- SEE SHEET 2 FOR MODULAR JACK 6 POS./6 CONTACTS
  - FOR APPLICATION INFORMATION SEE AMP SPEC. 114-19019.
  - FOR PERFORMANCE REQUIREMENTS SEE AMP SPEC. 108-19064.
  - TOLERANCES UNLESS OTHERWISE SPECIFIED:  $\pm 0.15\text{mm}$ .
- $\triangle$  TRUE POSITIONING WILL NOT BE GUARANTEED USING THIS PACKAGING TYPE.

REV	DATE	BY	CHKD	DESCRIPTION
Y	17-FEB-04	PW	PG	EHD1-0170-04
Z	10-OCT-05	PW	JB	ECR-05-012760



PRINTED CIRCUIT BOARD LAYOUT (6 POS./6 CONTACTS)  
 [VIEW SHOWN IS CIRCUIT (NON-COMPONENT) SIDE OF BOARD]  
 PRINTED CIRCUIT BOARD THICKNESS: 1.6mm NOMINAL.  
 TOLERANCES UNLESS OTHERWISE SPECIFIED:  $\pm 0.05$

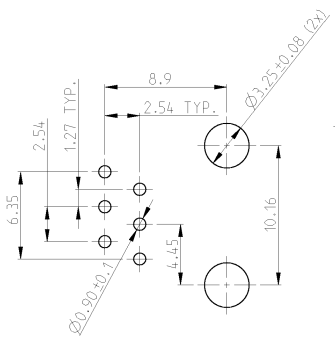
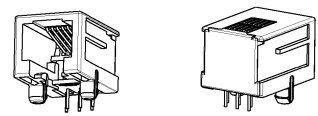
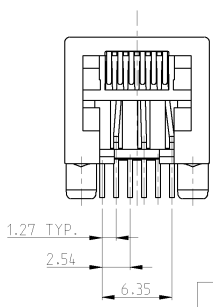
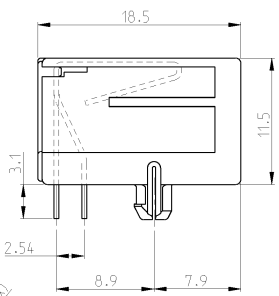
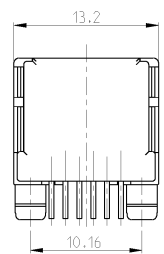
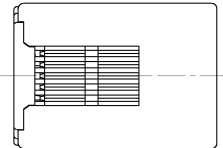
PACKAGING	REMARKS	FINISH	MATERIAL	P/N
TAPE MOUNTED 800 PCS/REEL			HOUSING COLOR BLACK	2-215876-3
BULK PACKED 1000 PCS IN A BOX			HOUSING AND CONTACT INSERT: RE-FLOW TEMPERATURE RESISTANT UL 94-V0	2-215876-1
240 PIECES IN A TRAY	6 POS./ 6 CONTACTS	IN CONTACT AREA: 1.2 $\mu\text{m}$ MIN. SEL. GOLD OVER 1.2 $\mu\text{m}$ MIN. NICKEL	HOUSING PA 4.6 CONTACT INSERT: PCT	2-215876-0
BULK PACKED 1000 PCS IN A BOX		SOLDER TINES: 2.5 $\mu\text{m}$ MIN. TIN OVER 1.2 $\mu\text{m}$ MIN. NICKEL		3-215876-1
240 PIECES IN A TRAY			HOUSING COLOR BLACK PBT, UL 94 V-0	1-215876-3
<del>100 PCS IN A MULTI-TUBE</del>	SUPERSEDED BY 1-215876-3		CONTACT INSERT: PBT, UL 94 V-0	<del>1-215876-1</del>
TAPE MOUNTED 800 PCS/REEL	6 POS./ 6 CONTACTS		CONTACTS: PH-BRONZE	215876-1

OWN	24 SEP 95	 Tyco Electronics Nederland B.V. 's-Heerengenbosch, The Netherlands
ENG. CONSTANT	24 SEP 95	
CHK	24 SEP 95	
DATE	24 SEP 95	
REV		
DRAWN		
DATE		
APP. SPEC	114-19019	
SIZE	A2	
CASE CODE	100779	
DRAWING NO	215876	
RESTRICTED TO		
CUSTOMER DRAWING		
SCALE	4:1	
SHEET	1	
OF	4	
REV	7	

THIS DRAWING IS UNPUBLISHED. RELEASED FOR PUBLICATION BY TICO ELECTRONICS CORPORATION. ALL RIGHTS RESERVED. 2000

- 1 SEE SHEET 4 FOR MODULAR JACK 6 POS./4 CONTACTS WITH CONTACT COVER.
  - 2 FOR APPLICATION INFORMATION SEE AMP SPEC. 114-19019.
  - 3 FOR PERFORMANCE REQUIREMENTS SEE AMP SPEC. 108-19064.
  - 4 TOLERANCES UNLESS OTHERWISE SPECIFIED: ± 0.15mm.
- ⚠ TRUE POSITIONING WILL NOT BE GUARANTEED USING THIS PACKAGING TYPE.

REV	DATE	BY	CHKD	DESCRIPTION
1	-	-	-	SEE SHEET 1
2	-	-	-	-
3	-	-	-	-



PRINTED CIRCUIT BOARD LAYOUT (6 POS./6 CONTACTS)  
 [VIEW SHOWN IS CIRCUIT (NON-COMPONENT) SIDE OF BOARD]  
 PRINTED CIRCUIT BOARD THICKNESS: 1.6mm NOMINAL.  
 TOLERANCES UNLESS OTHERWISE SPECIFIED: ± 0.05

PACKAGING	REMARKS	FINISH	MATERIAL	P/N	
BULK PACKED 1000 PCS IN A BOX	6 POS./ 6 CONTACTS	IN CONTACT AREA: 1.2 µm MIN. SEL. GOLD OVER 1.2 µm MIN. NICKEL	HOUSING COLOR BLACK PBT. UL94 V-0	5-215876-4	
240 PIECES IN A TRAY				CONTACT INSERT: PBT. UL94 V-0	5-215876-3
TAPE MOUNTED 800 PCS/REEL				CONTACT COVER: PBT. UL94 V-0	CONTACTS: Ph-BRONZE

DIMENSIONS: min 0 PLC #0 1 PLC #0.1 2 PLC #0.01 3 PLC #0.001 4 ANGLES FINISH	DWG # W. Willems CHK # W. Willems DATE 10-01-05 10-01-05 10-01-05 PRODUCT SPEC # 108-19064 APPLICATION SPEC # 114-19019 WEIGHT CUSTOMER DRAWING	TICO Electronics Tico Electronics Nederland B.V. 's-Heerengenbosch, The Netherlands MODULAR JACK, SIDE ENTRY, 6/6 FOR PRINTED CIRCUIT BOARD WITH CONTACT COVER SIZE CASE CODE DRAWING NO. A2100779 SCALE 4:1 SHEET 3 OF 4 REV 7
------------------------------------------------------------------------------------------------	-------------------------------------------------------------------------------------------------------------------------------------------------------------------------	------------------------------------------------------------------------------------------------------------------------------------------------------------------------------------------------------------------------------------------------