

REVISIONS		DOC. NO. SPC-P006	Effective 7/8/02	DSP No: 1398				
DSP #	REV	DESCRIPTION	DRAWN	DATE	CHECKD	DATE	APPRVD	DATE
1992	A	Released	JN	09/04/08	JWM	09/04/08	JWM	09/04/08



Specifications

Electrical Characteristics

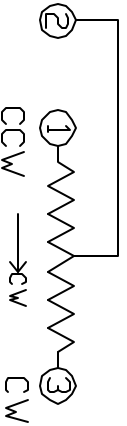
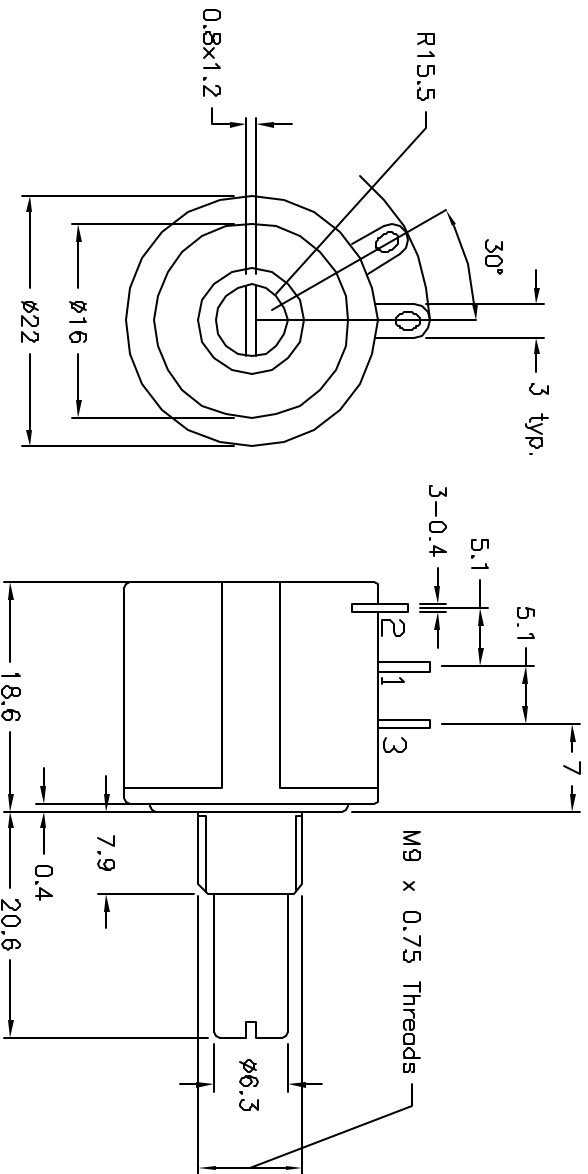
- Standard Resistance Range: 100 to 100K ohms
- Resistance Tolerance: ±5% std.
- Independent Linearity: ±0.25%
- Effective Electrical Angle: 3600° -10° min.
- Absolute Minimum Resistance: 0.2% or 2 ohms max.
- Noise: 100 ohms ENR max.
- Insulation Resistance: 500VDC, 1,000 megohms min.
- Dielectric Withstanding Voltage: 101.3 kPa 900VAC

Environmental Characteristics

- Power Rating: (500 Volts max.) 2 Watt (70°C), 0 Watt (125°C)
- Temperature Range: -55°C to +125°C
- Temperature Coefficient: ±100ppm/°C
- Vibration: 98 m/s² (1/Δ TR), 1/Δ VR)
- Shock: 490 m/s² (1/Δ TR), 1/Δ VR)
- Load Life: 1,000 Hrs, 2 Watt @ 70°C
- Rotational Life (No Load): 1,000,000 Shaft revolutions
- Total Resistance Shift: ±5% Max

Physical Characteristics

- Torque: 36mN-m max.
- Stop Strength: 300mN-m max.
- Mechanical angle: 3600° min.
- Standard Packaging: 10 or 25pcs per box



- Features:
- Multiturn / Wirewound / Industrial
 - Metal Shaft and Bushing
 - Bushing Mount
 - Available with shaft (6mm dia.)

Mfg. P/N	Resistance Ohms
MCWWPT-10-101-LF	100
MCWWPT-10-102-LF	1,000
MCWWPT-10-103-LF	10,000
MCWWPT-10-104-LF	100,000
MCWWPT-10-201-LF	200
MCWWPT-10-202-LF	2,000
MCWWPT-10-203-LF	20,000
MCWWPT-10-501-LF	500
MCWWPT-10-502-LF	5,000
MCWWPT-10-503-LF	50,000

TOLERANCES:

UNLESS OTHERWISE SPECIFIED, DIMENSIONS ARE FOR REFERENCE PURPOSES ONLY.

DRAWN BY:

Jason Nash

DATE:

09/04/08

CHECKED BY:

JWM

DRAWING TITLE:

Precision Wirewound Potentiometer

DATE:

09/04/08

APPROVED BY:

JWM

DATE:

09/04/08

SCALE:

NTS

SIZE:

A

DWG. NO.:

Ta-933

ELECTRONIC FILE:

Ta-933.dwg

REV:

A

SHEET:

1 OF 1

U.O.M.:

INCHES [mm]

SHEET:

1 OF 1

DISCLAIMER:

ALL STATEMENTS AND TECHNICAL INFORMATION CONTAINED HEREIN ARE BASED UPON INFORMATION AND/OR TESTS WE BELIEVE TO BE ACCURATE AND RELIABLE. SINCE CONDITIONS OF USE ARE BEYOND OUR CONTROL, THE USER SHALL DETERMINE THE SUITABILITY OF THE PRODUCT FOR THE INTENDED USE AND ASSUME ALL RISK AND LIABILITY WHATSOEVER IN CONNECTION THEREWITH.