



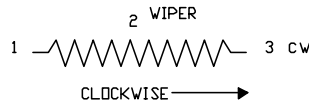
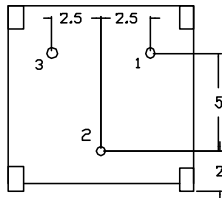
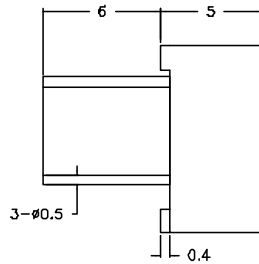
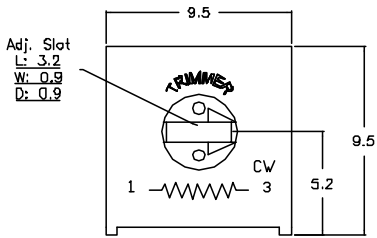
ALL RIGHTS RESERVED. NO PORTION OF THIS PUBLICATION, WHETHER IN WHOLE OR IN PART CAN BE REPRODUCED WITHOUT THE EXPRESS WRITTEN CONSENT OF SPC TECHNOLOGY.

SPC-F005.DWG

REVISIONS

DOC. NO. SPC-F005 * Effective: 7/8/02 * DCP No: 1308

DCP #	REV	DESCRIPTION	DRAWN	DATE	CHECKD	DATE	APPRVD	DATE
1992	A	Released	JN	08/08/08	JWM	08/08/08	JWM	08/08/08



Features:

- 9mm Square Single turn.
- Cermet/Industrial/Sealed.
- Available with a Knob for finger adjust.
- Available with extended shaft
- Top and side adjust types

Specifications

Electrical Characteristics

- Standard Resistance Range: 100 to 2megohms
- Resistance Tolerance: $\pm 10\%$ std.
- Absolute Minimum Resistance: 1% or 2 ohms max.
- Contact Resistance Variation: 3% or 3 ohms max.
- Adjustability: Voltage = $\pm 0.05\%$ Resistance = $\pm 0.15\%$
- Resolution: Infinite
- Insulation Resistance: 500VDC, 1,000 megohms min.
- Dielectric Strength: 101.3 kPa 500VAC, 8.5kPa 350 VAC
- Adjustable Angle: 260° nom

Environmental Characteristic

- Power Rating: (250 Volts max.) 0.5 Watt (70°C), 0 Watt (125°C)
- Temperature Range: -55°C to +125°C
- Temperature Coefficient: ± 100 ppm/°C
- Vibration: 98 m/s (1% TR; 1% VR)
- Shock: 390 n/s (1% TR; 1% VR)
- Load Life: 1,000 Hrs, 0.5 Watt @ 70°C
- Rotational Life: 200 Cycles Δ

Physical Characteristics

- Mechanical Angle: 280° nom.
- Torque: 20mN-m max.
- Stops Strength: 50mN-m max.
- Terminals: Solderable pins
- Standard Packaging: 50pcs. per tube



Mfg. P/N	Resistance Ohms
MCWIW1028-F-100-LF	10
MCWIW1028-F-102-LF	1,000
MCWIW1028-F-103-LF	10,000
MCWIW1028-F-104-LF	100,000
MCWIW1028-F-105-LF	1,000,000
MCWIW1028-F-501-LF	500
MCWIW1028-F-502-LF	5,000
MCWIW1028-F-503-LF	50,000

DISCLAIMER:
ALL STATEMENTS AND TECHNICAL INFORMATION CONTAINED HEREIN ARE BASED UPON INFORMATION AND/OR TESTS WE BELIEVE TO BE ACCURATE AND RELIABLE. SINCE CONDITIONS OF USE ARE BEYOND OUR CONTROL, THE USER SHALL DETERMINE THE SUITABILITY OF THE PRODUCT FOR THE INTENDED USE AND ASSUME ALL RISK AND LIABILITY WHATSOEVER IN CONNECTION THEREWITH.

TOLERANCES:

UNLESS OTHERWISE SPECIFIED, DIMENSIONS ARE FOR REFERENCE PURPOSES ONLY.

DRAWN BY:	DATE:
Jason Nash	08/08/08
CHECKED BY:	DATE:
JWM	08/08/08
APPROVED BY:	DATE:
JWM	08/08/08

DRAWING TITLE:

TRIMMER POTENTIOMETER

SIZE	DWG. NO.	ELECTRONIC FILE	REV
A	Ta-930	Ta-930.DWG	A
SCALE: NTS	U.Q.M.: INCHES [mm]	SHEET: 1 OF 1	