



## Features

- Carbon element
- Metal housing
- 45 - 100 mm travel
- Single and dual gang
- Dust cover option
- RoHS compliant\*

## Applications

- Audio/TV sets
- Car radio
- Amplifiers/mixers/drum machines/synthesizers
- PCs/monitors
- Appliances

# PTB Series - Low Profile Slide Potentiometer

### Electrical Characteristics

Taper .....Linear, audio  
 Standard Resistance Range  
 .....1 K ohms to 1 M ohms  
 Standard Resistance Tolerance .....±20 %  
 Residual Resistance  
 .....500 ohms or 1 % max.  
 Insulation Resistance  
 .....Min. 100 megohms at 250 V DC

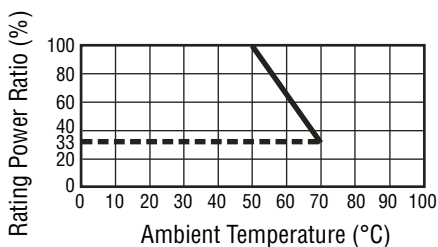
### Environmental Characteristics

Operating Temperature  
 .....-10 °C to +50 °C  
 Power Rating, Linear  
 45 mm ....0.125 W (0.06 W Dual Gang)  
 60 mm .....0.25 W (0.125 W)  
 100 mm .....0.5 W (0.5 W)  
 Power Rating, Audio  
 45 mm ..0.025 W (0.015 W Dual Gang)  
 60 mm .....0.25 W (0.125 W)  
 100 mm .....0.25 W (0.25 W)  
 Maximum Operating Voltage - Linear  
 15 mm Travel.....100 VDC  
 20 mm Travel.....200 VDC  
 30 mm Travel.....200 VDC  
 45 mm Travel.....200 VDC  
 60 mm Travel.....200 VDC  
 Maximum Operating Voltage - Audio  
 15 mm Travel.....50 VDC  
 20 mm Travel.....150 VDC  
 30 mm Travel.....150 VDC  
 45 mm Travel.....150 VDC  
 60 mm Travel.....150 VDC  
 Withstand Voltage, Audio  
 .....1 Min. at 500 V AC  
 Tracking Error.....3 dB at -40 to 0 dB

### Mechanical Characteristics

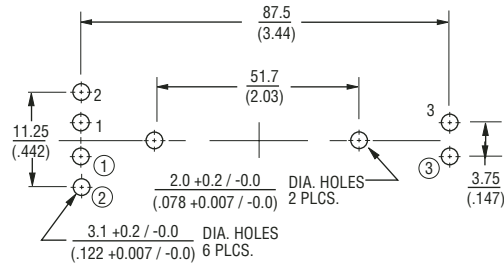
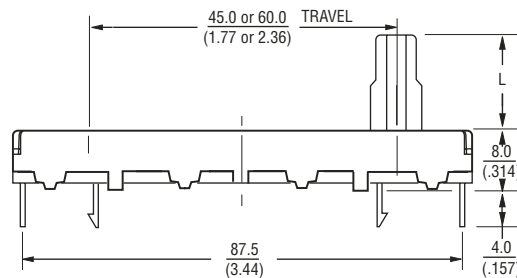
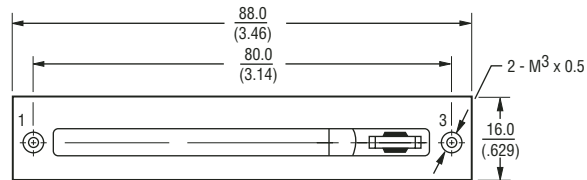
Operating Force .....10 to 100 g-cm  
 Stop Strength.....5 kg-cm min.  
 Sliding Life .....15,000 cycles  
 Soldering Condition  
 .....300°C max. within 3 seconds  
 Travel.....45, 60, 100mm

### Derating Curve



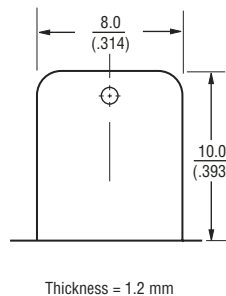
### Product Dimensions

#### PTB45 and PTB60

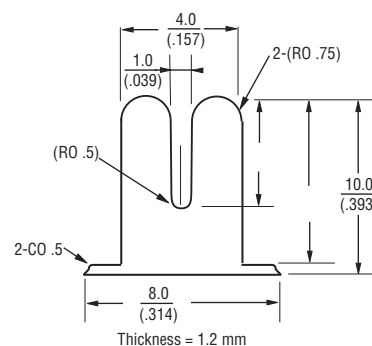


Numbers ①, ② and ③ for Dual Gang Versions

Lever Style  
BP Metal Lever



AP Metal Lever



DIMENSIONS ARE:  $\frac{\text{MM}}{\text{(INCHES)}}$

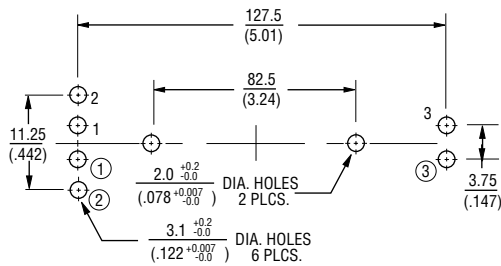
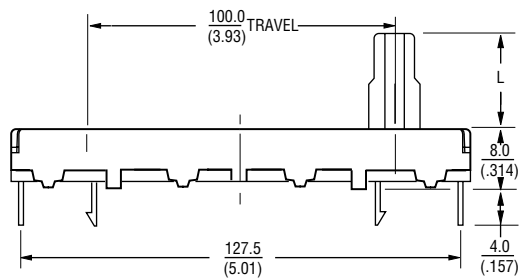
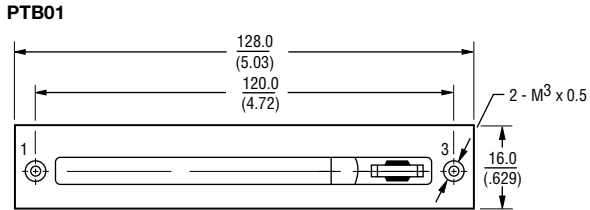
\*RoHS Directive 2002/95/EC Jan 27 2003 including Annex. Specifications are subject to change without notice.

Customers should verify actual device performance in their specific applications.

# PTB Series - Low Profile Slide Potentiometer

**BOURNS®**

## Product Dimensions



Numbers ①, ② and ③ for Dual Gang Versions

DIMENSIONS:  $\frac{\text{MM}}{(\text{IN.})}$

## How To Order

**PTB 01 4 3 - 2 0 10 BP A 102**

Model \_\_\_\_\_

Stroke Length \_\_\_\_\_  
 • 45 = 45 mm  
 • 60 = 60 mm  
 • 01 = 100 mm

Dust Cover Option \_\_\_\_\_  
 • 4 = No Dust Cover  
 • 5 = Rubber Dust Cover

No. of Gangs \_\_\_\_\_  
 • 3 = Single Gang  
 • 4 = Dual Gang

Pin Style \_\_\_\_\_  
 • 2 = PC Pins Down Facing

No Detent \_\_\_\_\_

Standard Lever Length \_\_\_\_\_  
 • 10 = 10 mm

Lever Style \_\_\_\_\_  
 • BP = Metal Lever (Refer to Drawing)  
 • AP = Metal Lever (Refer to Drawing)

Resistance Taper \_\_\_\_\_  
 • A = Audio Taper  
 • B = Linear Taper

Resistance Code (See Table) \_\_\_\_\_

Other styles available

## Standard Resistance Table

Resistance (Ohms)	Resistance Code
1,000	102
2,000	202
5,000	502
10,000	103
20,000	203
50,000	503
100,000	104
200,000	204
500,000	504
1,000,000	105

REV. 03/08

Specifications are subject to change without notice.  
 Customers should verify actual device performance in their specific applications.