

THIS DOCUMENT CONTAINS PROPRIETARY DATA OF POLARIS INDUSTRIAL ENTERPRISES INC. NO DISCLOSURE, REPRODUCTION, OR USE OF ANY PART THERE OF MAY BE MADE EXCEPT BY WRITTEN PERMISSION.

REV.	BY	DATE	P/N
E	BT	9-17-99	'B' DIM REDUCED 1" LCP12Y

SPECIFICATIONS

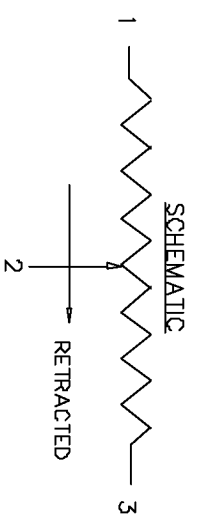
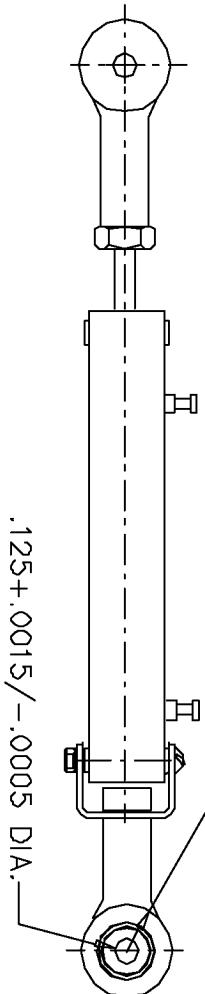
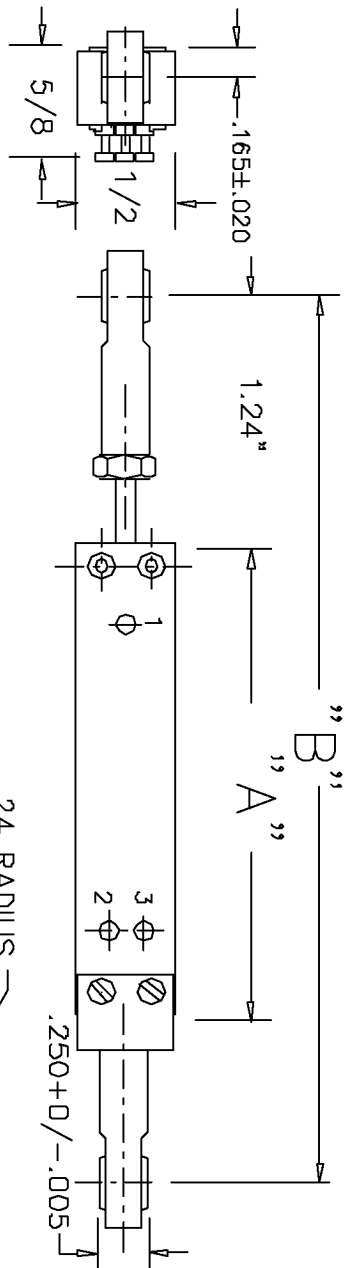
RESOLUTION _____ INFINITE
 OUTPUT SMOOTHNESS _____ LESS THAN 0.1% INPUT VOLTAGE
 CONTACT RESIS. VARIATION - LESS THAN 2%
 DIELECTRIC STRENGTH _____ 1000 MEGOHMS AT 500VDC MIN.
 INSULATION RESISTANCE _____ 500 VAC MIN.
 FRICTION _____ 1.8 OZ. (3.6 OZ. FOR LCP12Y)
 STOP STRENGTH _____ 20 OZ. MIN.
 RESISTANCE TEMPCO _____ ±400 PPM/°C
 WEIGHT _____ 10 TO 35 GRAMS
 LIFE EXPECTANCY _____ 20 MILLION
 BEARINGS _____ NYLON
 TEMPERATURE RANGE _____ -50° TO 105° C.

MATERIALS

BODY _____ ALUMINUM(BLACK ANODIZE)
 LID _____ HIGH TEMP. PLASTIC
 SHAFT _____ STAINLESS STEEL
 TERMINALS _____ BRASS GOLD PLATED
 RESISTANCE ELEMENT _____ CONDUCTIVE PLASTIC

OPTIONS AVAILABLE

SPECIAL ENDED SHAFTS
 SPECIAL RESISTANCE VALUES
 SPECIAL LINEARITY
 NON STANDARD STROKES
 WIREWOUND RESISTANCE ELEMENT
 BRONZE BUSHINGS

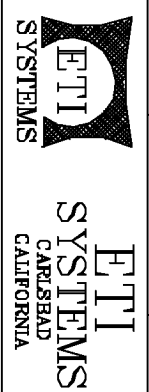


MODEL NO.	LCP12Y-12	LCP12Y-25	LCP12Y-50	LCP12Y-100
STD. RESIS. VALUES	500, 1K, 2K 5K, 10K	500, 1K, 2K 5K, 10K	500, 1K, 2K 5K, 10K	1K, 2K, 5K 10K, 20K
RESISTANCE TOL.	±20%	±20%	±20%	±20%
LINEARITY (IND.)	±1.5%	±1.0%	±0.7%	±0.5%
POWER RATING	0.2 WATT	0.4 WATT	0.7 WATT	1.2 WATT
STROKE MECH+1-.0	1/2"	1"	2"	4"
STROKE ELECT ±.02				
'A' DIM ±0.04	1.50	2.00	3.00	5.00
'B' DIM (REF.)	3.62	4.12	5.12	7.12

TOLERANCES

XX = +/- .010" FRACT. = +/- 1/64"
 XXX = +/- .005" ANGLES = +/- 1/2"
 UNLESS SPECIFIED OTHERWISE.
 ALL SPECIFICATIONS SUBJECT TO CHANGE WITHOUT NOTICE.

SCALE	DATE:	BY	APPRVD	BT
NONE	11-12-89			
CODE IDENT:	19477			



TITLE

LINEAR MOTION
 POTENTIOMETER

PART NO.

LCP12Y