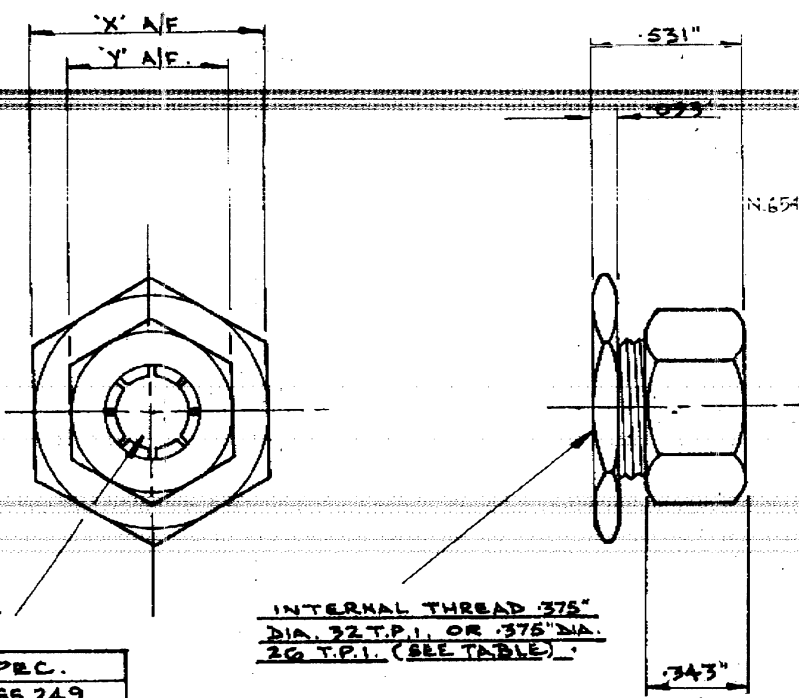


PART No.
A43 ETC.

FIRST ANGLE PROJECTION

ALTERATIONS			
ISS.	C.N. No.	ALTERATION	SIG. & DATE
G	5923	FIGURE 'A' ADDED	17.3.68
F		RE-DRAWN. A. 609 TO A. 628	7.10.68
B	11914	FIGURE 'A' DELETED	10.11.68



NO.	DIM	DIM	THREA	MAT.	FIN.
A43	.710	.562	3/8x32	BURAGG	N.P.
A43A	.710		3/8x26	"	"
A100	.562	.562	3/8x32	"	"
A100A	.562		3/8x26	"	"
A105	.600	.562	3/8x32	"	"
A105A	.600		3/8x26	"	"
A203	.710	.562	3/8x32	"	CAD. P.
A491	.562		3/8x32	BURAL ANOD.	
A491A	.562		3/8x26	"	"
A609	.600		3/8x32	"	"
A699	.562		3/8x32	BURAGG	CAD. P.
A803	.600		3/8x32	"	"
A817	.562		3/8x32	"	ACHR
A828	.710		3/8x32	BURAL	ANOD.

REAM .250" DIA.

INTERNAL THREAD .375"
DIA. 22 T.P.I. OR .375" DIA.
26 T.P.I. (SEE TABLE)

L.	FINISH	SPEC.
SS		BSS 249
AL		BSS1476 HEMT
	N.P.	D.T.D. 919 A
	CAD. P.	D.T.D. 904
	ACHR	BSS 122 A
	ANOD.	D.T.D. 910 C

DRAWN	CHECKED	APPROVED	DATE
B. S.	P. D.		7-10-68

MATERIAL: SEE TABLES	FINISH: SEE TABLES
TITLE: - SPINDLE LOCKING DEVICE	PART No. A43 ETC.
USED ON VARIOUS	COLVERN LTD., ROMFORD, ESSEX.

TOLERANCES
DECIMALS: ± .005"
FRACTIONS: ± 1/64"
UNLESS OTHERWISE STATED

SCALE
2:1

DIMENSIONS IN INCHES