

NOTES:

1- MATERIAL:

HOUSING: LCP GLASS FILLED UL 94V0 COLOUR: BLACK
 TERMINAL: BRASS PLATED WITH:
 0.00127/.000050 MIN GOLD IN CONTACT AREA,
 0.00190/.000075 MIN PURE TIN IN TAIL AREA,
 BOTH OVER 0.00127/.000050 MIN NICKEL OVERALL.
 SOLDER TABS: BRASS PLATED WITH 0.0020/.000078 MIN TIN.

2- JACK FOR MATING WITH F.C.C.68 PLUGS.
 (MOLEX 90075 SERIES).

3- PRODUCT SPECIFICATION: MOLEX PS-85502-001

4- POLYIMIDE ADHESIVE TAPE FOR PICK & PLACE SURFACE.
 THICKNESS: 125 μm/4921 μ"

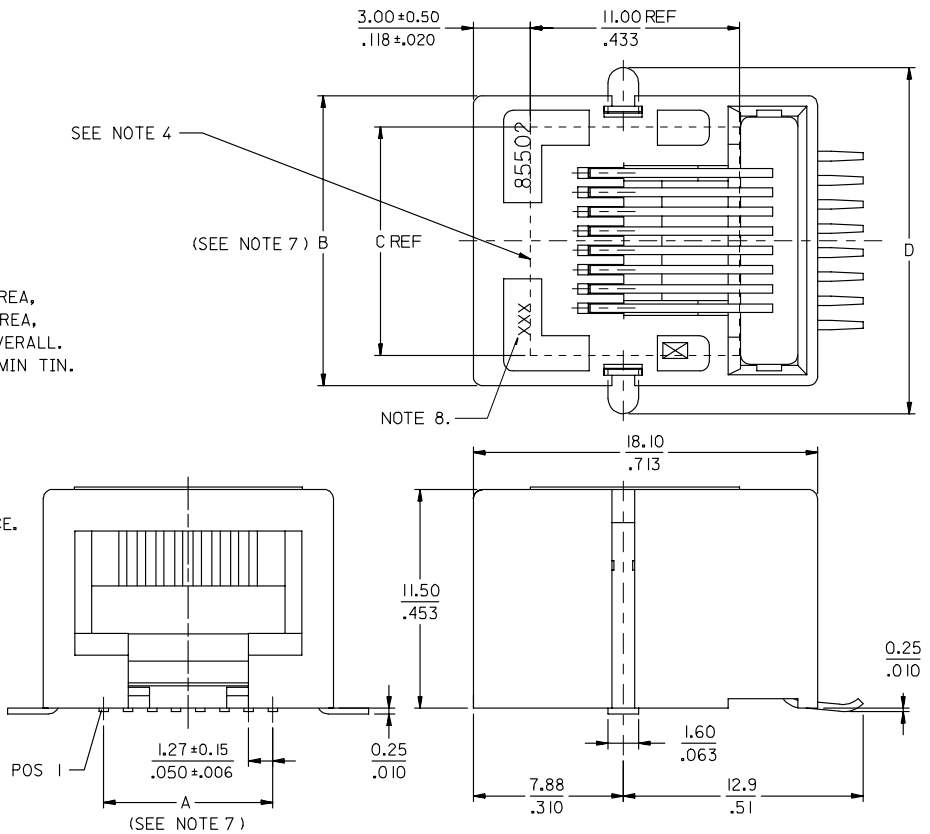
5- PACKAGING SPECIFICATION: MOLEX PK-85502.
 (BLISTER PACKAGING).

6- COPLANARITY OF SIGNAL LEADS: 0.10/.004

7- SEE DIMENSIONS IN CHART ON SHEET 2.

8- MANUFACTURING I.D. CAN BE EITHER MG, MXF OR MXI.

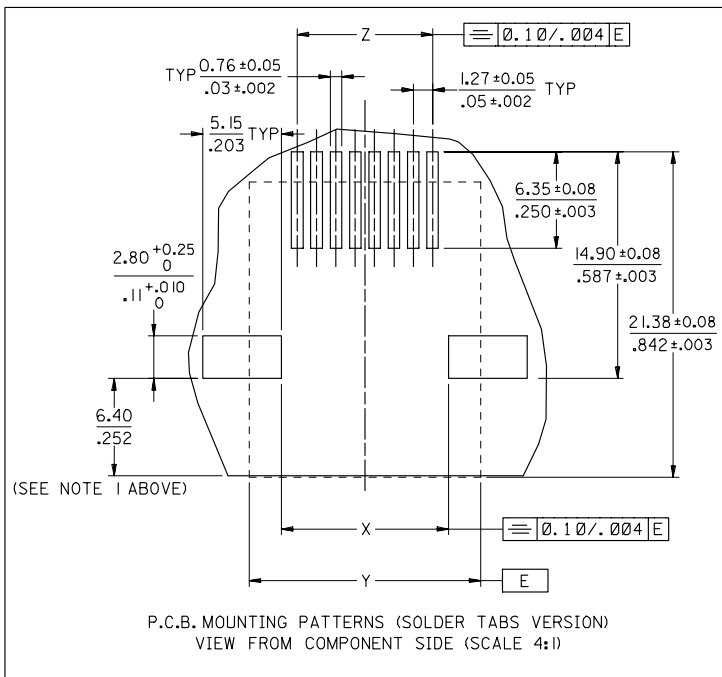
9- APPLICATION SPECIFICATION: AS-85513-001



MODIFIED MATERIAL EC NO: E2007-0717 DRAWN BY: RINES CHKD: 2007/02/15 APPR: EOMAHONY 2007/02/15	QUALITY SYMBOLS ▽=0 ▽=0	GENERAL TOLERANCES (UNLESS SPECIFIED)		DIMENSION STYLE MM/IN		SCALE 5:1	DESIGN UNITS METRIC	THIRD ANGLE PROJECTION
		4 PLACES ± --- ± --- 3 PLACES ± --- ± .010 2 PLACES ± 0.25 ± .014 1 PLACE ± 0.35 ± --- ANGULAR ± 2 °	DRAWN BY DB DATE 2006/06/12	CHECKED BY EOMAHONY DATE 2006/06/15	APPROVED BY EOMAHONY DATE 2006/06/15	TITLE R/A LOW PROFILE TRUE SMT 4,6 & 8 CONTACTS PC JACK WITH SIDE SOLDER TABS MOLEX MOLEX INCORPORATED		MATERIAL NO. SEE CHART SHT 2
DRAFT WHERE APPLICABLE MUST REMAIN WITHIN DIMENSIONS		THIS DRAWING CONTAINS INFORMATION THAT IS PROPRIETARY TO MOLEX INCORPORATED AND SHOULD NOT BE USED WITHOUT WRITTEN PERMISSION						

10 9 8 7 6 5 4 3 2 1

NOTE 1: RECOMMENDED DISTANCE FROM THE PCB'S EDGE



PART NUMBERS FOR TRUE SMT JACK WITH SOLDER TABS						
HOUSING COLOR	POS 4	POS 6	POS 6	POS 8		
	4 CKTS	4 CKTS	6 CKTS	8 CKTS		
STANDARD VERSION	BLACK	85502-5005	85502-5006	85502-5007	85502-5008	

TYPE	POS 4		POS 6		POS 8	
	4 CKTS	4 CKTS	6 CKTS	6 CKTS	8 CKTS	8 CKTS
A ±0.15/.006	3.81 / .150	3.81 / .150	6.35 / .250	6.35 / .250	8.89 / .350	8.89 / .350
B	11.18 / .440	13.21 / .520	13.21 / .520	13.21 / .520	15.24 / .600	15.24 / .600
C (REF)	8.50 / .335	8.50 / .335	8.50 / .335	8.50 / .335	12.00 / .472	12.00 / .472
D ±0.35/.014	14.13 / .556	16.16 / .636	16.16 / .636	16.16 / .636	18.19 / .716	18.19 / .716
X ±0.10/.004	6.94 / .273	8.97 / .353	8.97 / .353	8.97 / .353	11.00 / .433	11.00 / .433
Y (REF)	11.18 / .440	13.21 / .520	13.21 / .520	13.21 / .520	15.24 / .600	15.24 / .600
Z ±0.05/.002	3.81 / .150	3.81 / .150	6.35 / .250	6.35 / .250	8.89 / .350	8.89 / .350

SEE SHEET 1 EC NO: E2007-0717 DRAWN BY: RINES CHKD: CHIKO APPR: EOMAHONY 2007/02/15 2007/02/15 2007/02/15	QUALITY SYMBOLS ▽=0 ▽=0	GENERAL TOLERANCES (UNLESS SPECIFIED) mm INCH 4 PLACES ± --- ± --- 3 PLACES ± --- ± .010 2 PLACES ± 0.25 ± .014 1 PLACE ± 0.35 ± --- ANGULAR ± 2 °	DIMENSION STYLE MM/IN DRAWN BY: DB DATE: 2006/06/12 CHECKED BY: EOMAHONY DATE: 2006/06/15 APPROVED BY: EOMAHONY DATE: 2006/06/15	SCALE: 5:1 DESIGN UNITS: METRIC THIRD ANGLE PROJECTION	TITLE: R/A LOW PROFILE TRUE SMT 4,6 & 8 CONTACTS PC JACK WITH SIDE SOLDER TABS MOLEX INCORPORATED
	DRAFT WHERE APPLICABLE MUST REMAIN WITHIN DIMENSIONS	MATERIAL NO.: SEE CHART SIZE: A3	DOCUMENT NO.: SD-85502-101 SHEET NO.: 2 OF 2	THIS DRAWING CONTAINS INFORMATION THAT IS PROPRIETARY TO MOLEX INCORPORATED AND SHOULD NOT BE USED WITHOUT WRITTEN PERMISSION	

9 8 7 6 5 4 3 2 1