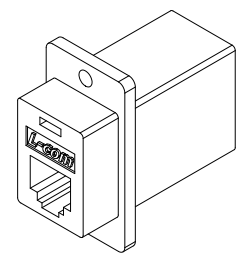
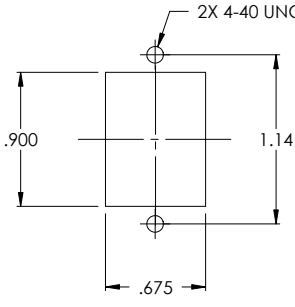
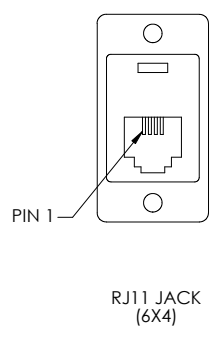
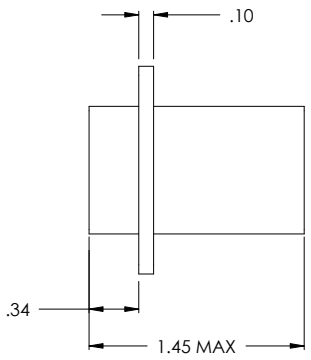
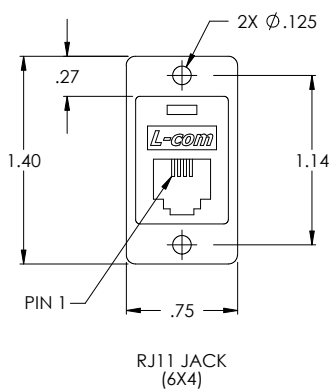


THE INFORMATION CONTAINED IN THIS DRAWING IS THE SOLE PROPERTY OF L-COM, INC. ANY REPRODUCTION IN PART OR WHOLE WITHOUT THE WRITTEN PERMISSION OF L-COM, INC. IS PROHIBITED.

REVISIONS			
REV	DESCRIPTION	DATE	APPROVED
A	RELEASED FOR PRODUCTION	05/04/01	MCCORMICK
B	REVISED PER ECN# 1034	12/03/01	MCCORMICK
C	ADDED PROD VALIDATION. DELETED METRIC DIMS (ECN1313)	02/22/03	DFP
D	ECN1622: ADDED COMPONENT SPECIFICATION TABLE	12/15/03	DFP



Component Specification	
<b>Material</b>	
Housing	ABS, UL94V-0 compliant Color: Black
Contacts	Phosphor Bronze
Contact Plating	Gold, 50 μinches over nickel plating
<b>Design</b>	
Jack	Compliant to FCC 68.5 Subpart F
<b>Electrical</b>	
Current Rating	2 Amp (max)
Voltage Rating	140 VDC
<b>Environmental</b>	
Operating Temperature Range	-20°C to +80°C
<b>Application</b>	
Rating	Category 3
Wiring	Straight Through

CS-154

UNLESS OTHERWISE SPECIFIED DIMENSIONS ARE IN INCHES  
 .XX ±.01  
 .XXX ±.005  
 CABLE LENGTH TOLERANCE  
 <300' ±5% >300' ±2%

APPROVALS	DATE
DRAWN BY McCORMICK	04/03/01
CHECKED BY D.PARHAM	05/04/01
APPROVED BY R.CARRICK	05/04/01

**L-com** 45 BEECHWOOD DRIVE  
 NORTH ANDOVER, MA 01845  
**CONNECTIVITY PRODUCTS**

PRODUCT DESCRIPTION  
**RJ11 (6 X 4) STRAIGHT WIRED COUPLER**

DRAWING TITLE  
**OUTLINE DRAWING**

SIZE <b>A</b>	FSCM NO. <b>43321</b>	DWG. NO. ECF504B-4S-OD1	REV. <b>D</b>
SCALE: NONE	CAD FILE: ECF504B-4S-OD1.SLDDRW	SHEET 1 OF 1	

CONFIGURATION DETAILS OF UNDIMENSIONED FEATURES MAY VARY