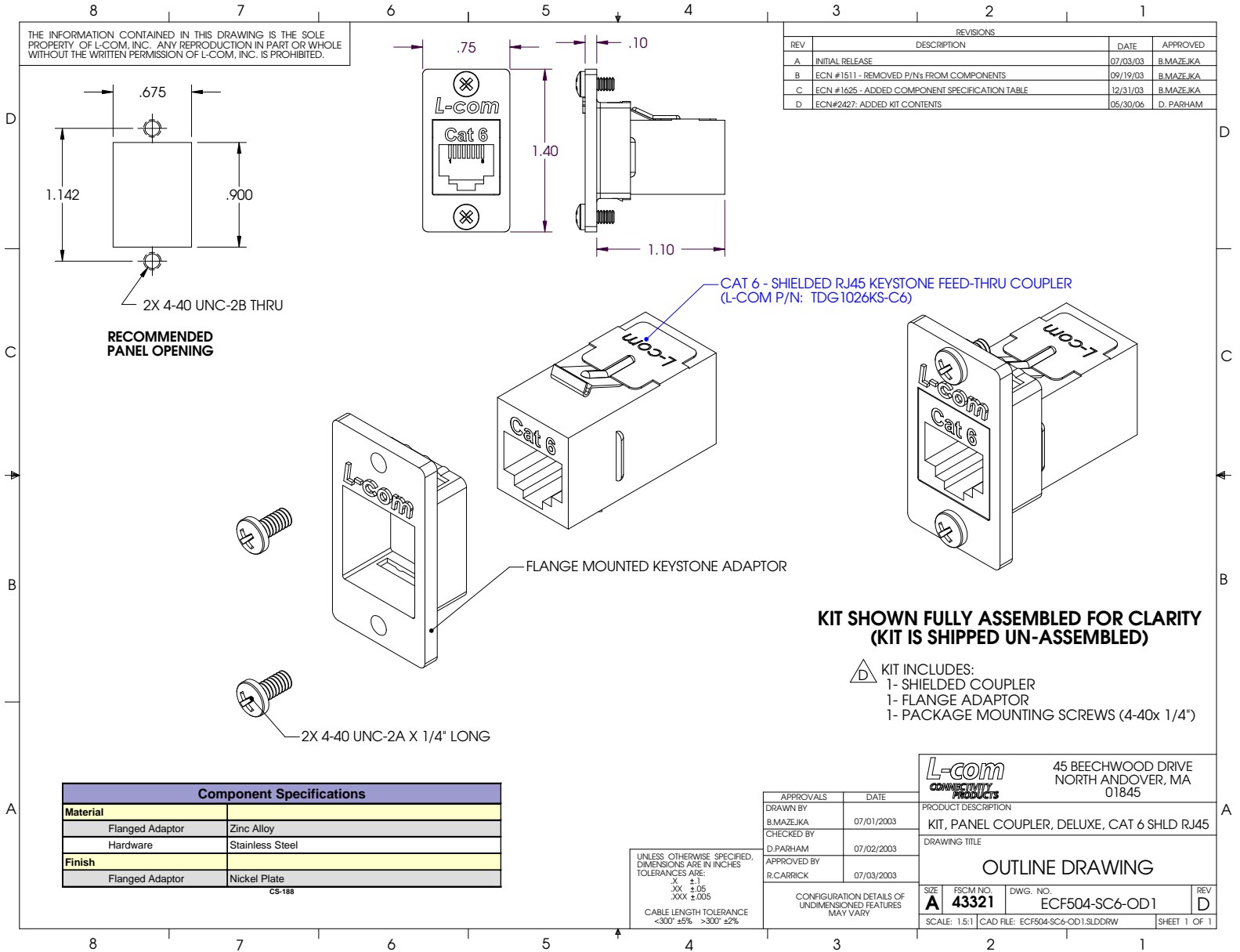


THE INFORMATION CONTAINED IN THIS DRAWING IS THE SOLE PROPERTY OF L-COM, INC. ANY REPRODUCTION IN PART OR WHOLE WITHOUT THE WRITTEN PERMISSION OF L-COM, INC. IS PROHIBITED.

REVISIONS			
REV	DESCRIPTION	DATE	APPROVED
A	INITIAL RELEASE	07/03/03	B.MAZEJKA
B	ECN #1511 - REMOVED P/Ns FROM COMPONENTS	09/19/03	B.MAZEJKA
C	ECN #1625 - ADDED COMPONENT SPECIFICATION TABLE	12/31/03	B.MAZEJKA
D	ECN#2427: ADDED KIT CONTENTS	05/30/06	D. PARHAM



KIT SHOWN FULLY ASSEMBLED FOR CLARITY (KIT IS SHIPPED UN-ASSEMBLED)

- △ KIT INCLUDES:
- 1- SHIELDED COUPLER
 - 1- FLANGE ADAPTOR
 - 1- PACKAGE MOUNTING SCREWS (4-40x 1/4")

Component Specifications	
Material	
Flanged Adaptor	Zinc Alloy
Hardware	Stainless Steel
Finish	
Flanged Adaptor	Nickel Plate
	CS-188

UNLESS OTHERWISE SPECIFIED, DIMENSIONS ARE IN INCHES. TOLERANCES ARE:
 X ±.1
 .XX ±.05
 .XXX ±.005
 CABLE LENGTH TOLERANCE
 <300' ±5% >300' ±2%

APPROVALS		DATE	 45 BEECHWOOD DRIVE NORTH ANDOVER, MA 01845
DRAWN BY	B.MAZEJKA	07/01/2003	
CHECKED BY	D.PARHAM	07/02/2003	
APPROVED BY	R.CARRICK	07/03/2003	
CONFIGURATION DETAILS OF UNDIMENSIONED FEATURES MAY VARY			PRODUCT DESCRIPTION KIT, PANEL COUPLER, DELUXE, CAT 6 SHLD RJ45 DRAWING TITLE OUTLINE DRAWING
SIZE	A	FSCM NO. 43321	DWG. NO. ECF504-SC6-OD1
SCALE	1.5:1	CAD FILE: ECF504-SC6-OD1.SLDDRW	SHEET 1 OF 1