

### Coil type EMI Filters (DNF) SMD

Japan

Series: **E**

Type: **-**



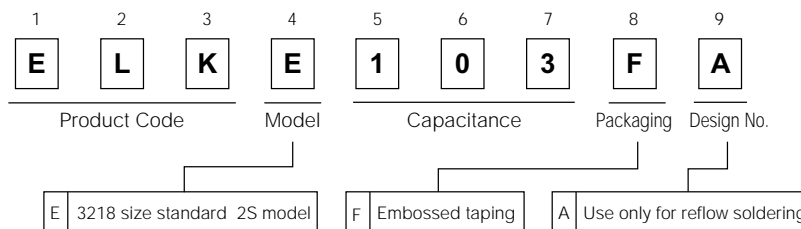
#### ■ Features

- 3218 case size, 2 A rated current.
- No variation in attenuation characteristics as current changes.
- Stable P/N marking using laser technology.
- Marking is on the top face of product. Easy P/N marking confirmation after assembly on PWB.

#### ■ Recommended Applications

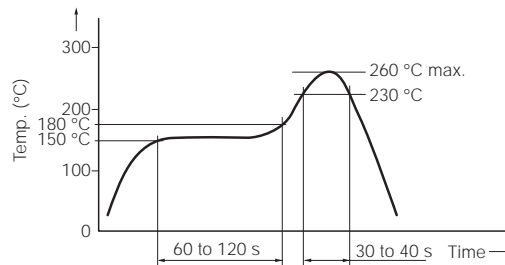
- Data lines, secondary power supply lines (DC lines) for game, digital AV and communications equipment.

#### ■ Explanation of Part Numbers



#### ■ Typical Specification

- Operating temperature : -20 to +85 °C
- Rated Voltage : DC 50 V (Except ELKEA333FA : DC25 V)
- Rated Current : DC 2 A
- Reliability characteristics endurance (High Temp.)  
Soldering condition (reflow) : 85 °C 50 V 2 A 1000 h (Spec : 500 h)



#### ■ Standard Parts

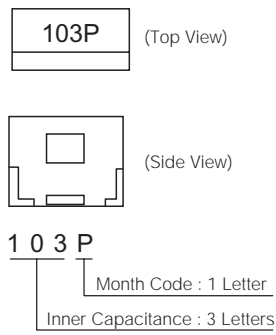
Part No.	Cut off frequency (MHz)	Inner Capacitance (pF typ.)	Rated Voltage (V)	Rated Current (A)	Indication	Min, Packaging unit (pcs.)
ELKE100FA	250	10	50	2.0	100□	2000
ELKE220FA	200	22			220□	
ELKE470FA	100	47			470□	
ELKE101FA	50	100			101□	
ELKE221FA	25	220			221□	
ELKE471FA	10	470			471□	
ELKE102FA	5	1000			102□	
ELKE222FA	2	2200			222□	
ELKE103FA	0.5/DC	10000	25	103□	333□	
ELKE333FA	0.2/DC	33000				

note1 : 4th letter (□) of marking indicates the Month Code.

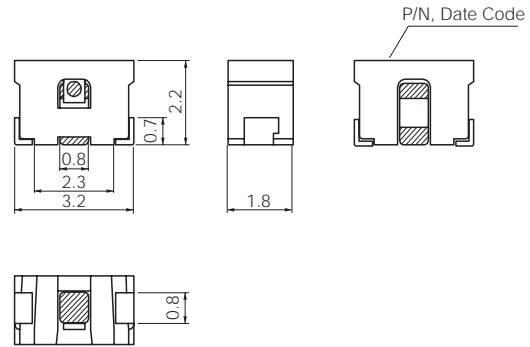
Design and specifications are each subject to change without notice. Ask factory for the current technical specifications before purchase and/or use. Should a safety concern arise regarding this product, please be sure to contact us immediately.

Jun. 2006

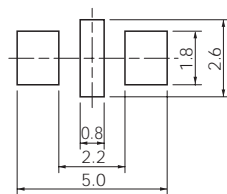
### ■ Indication Examples



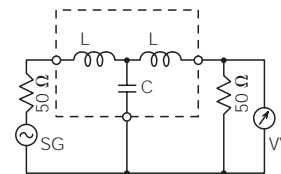
### ■ Dimensions in mm (not to scale)



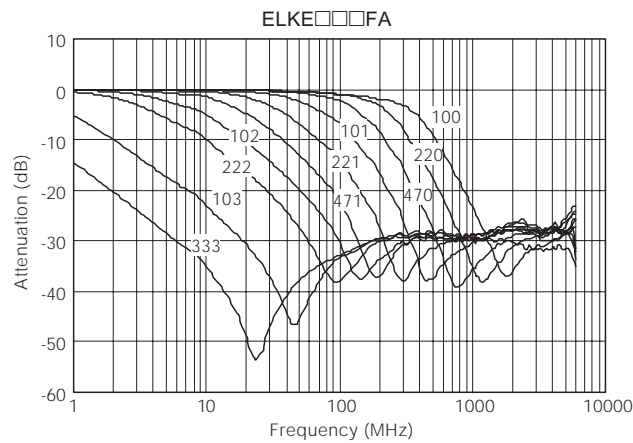
### ■ Land Pattern in mm (not to scale)



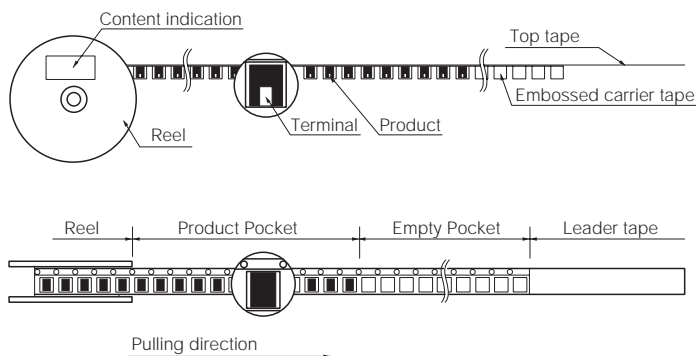
### ■ Equivalent circuit, measurement block diagram



### ■ Performance characteristics (Reference)



### ■ Packaging state



Reel Size :  $\phi 178$   
 Q'ty : 2000 pcs./Reel  
 Packaging : Embossed taping