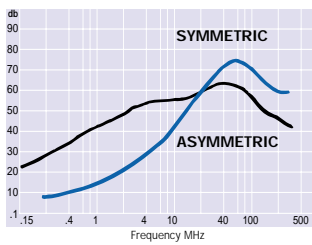
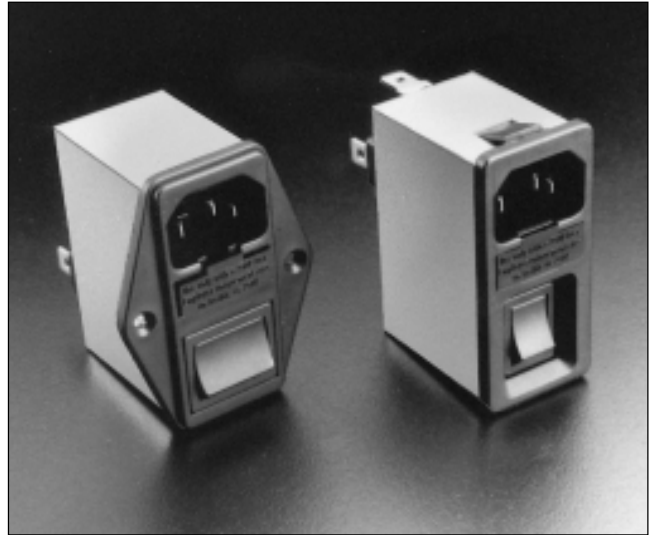
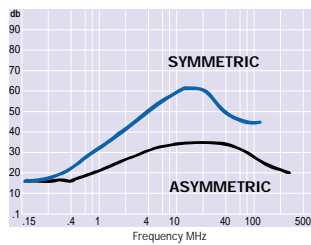


2 & 6 AMP STANDARD & SURGE P



2 & 6 AMP MEDICAL VERSION



Part No.	Rated Current A	Leakage Current @ 250V 50Hz	Inductance mH	Connections Input	Connections Output	Resistor Value MΩ	Number of Fuses	Mounting	Approvals
Standard Version									
SF 2030-2/01	2	0.2mA	2.0	IEC 320	6.3 x 0.8 Faston	1	1	Snap-in	■ ■ ■
SF 2032-2/01	2	0.2mA	2.0	IEC 320	6.3 x 0.8 Faston	1	2	Screw Mount	■ ■ ■
SF 2030-6/01	6	0.2mA	0.5	IEC 320	6.3 x 0.8 Faston	1	1	Snap-in	■ ■ ■
SF 2032-6/01	6	0.2mA	0.5	IEC 320	6.3 x 0.8 Faston	1	2	Screw Mount	■ ■ ■
Medical Version									
SF 2030M-2/01	2	5μA	2.0	IEC 320	6.3 x 0.8 Faston	1	1	Snap-in	■ ■ ■
SF 2032M-2/01	2	5μA	2.0	IEC 320	6.3 x 0.8 Faston	1	2	Screw Mount	■ ■ ■
SF 2030M-6/01	6	5μA	0.5	IEC 320	6.3 x 0.8 Faston	1	1	Snap-in	■ ■ ■
SF 2032M-6/01	6	5μA	0.5	IEC 320	6.3 x 0.8 Faston	1	2	Screw Mount	■ ■ ■
Surge Protected Version (IEC 950 not applicable)									
SF 2030Z-2/01	2	0.2mA	2.0	IEC 320	6.3 x 0.8 Faston	1	1	Snap-in	■ ■ ■
SF 2032Z-2/01	2	0.2mA	2.0	IEC 320	6.3 x 0.8 Faston	1	2	Screw Mount	■ ■ ■
SF 2030Z-6/01	6	0.2mA	0.5	IEC 320	6.3 x 0.8 Faston	1	1	Snap-in	■ ■ ■
SF 2032Z-6/01	6	0.2mA	0.5	IEC 320	6.3 x 0.8 Faston	1	2	Screw Mount	■ ■ ■

Temperature Range: -25°C to +85°C
Operating Voltage: 250Vac
Operating Frequency: 0 to 400Hz
Test Voltage: L+N to ground, 2700Vdc, 2 seconds

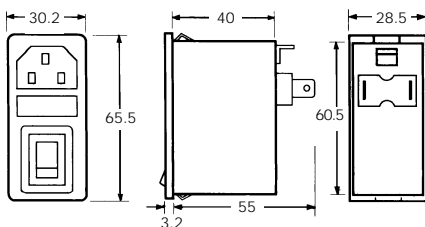
Varistor
 Zinc oxide type; energy absorption 21 Joules (current impulse defined in IEC 60-2 Section 6). Varistor voltage: 430Vdc (measured at 1mA); clamping voltage 710V at 10A

■ Approved
 □ Submitted for Approval

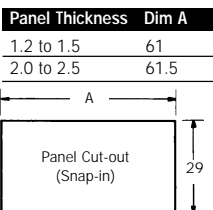
IEC 950 (EN 60950) Applications
 Twin fused version only

DIMENSIONS

All dimensions are nominal and in mm
 SF 2030 (Single Fuseholder Snap-in)

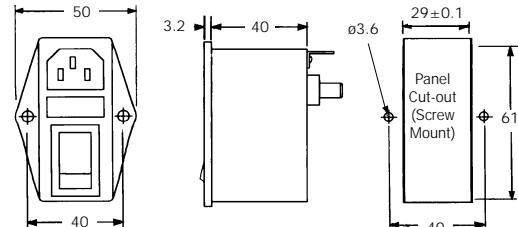


Panel Cut-out Details



FRONT MOUNTING

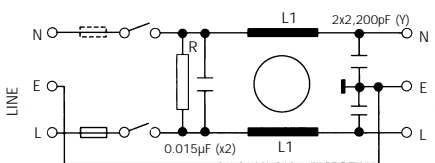
SF 2032 (Double Fuseholder Screw Mount)



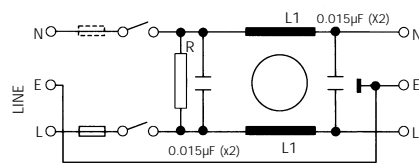
FRONT MOUNTING

CIRCUIT DIAGRAMS

Standard Version



Medical Version (Suffix 'M')



Surge Protected Version (Suffix 'Z')

