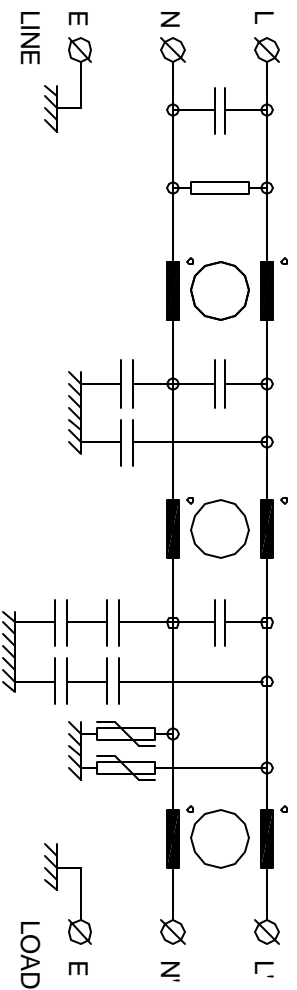


SPECIFICATION

- VOLTAGE 250VAC
- FREQUENCY 50/60Hz
- CURRENT 10A @ 50 deg C
- OVERLOAD CURRENT 150% 1MIN. 200% 1SEC
- TEMPERATURE -25 TO 85 deg C
- LEAKAGE CURRENT:-
- AS PER IEC950 = 45mA @ 240V 50HZ
- HUMIDITY 90% RH
- VIBRATION 10-200Hz 1.8G
- SURGE 6kV 1.2/50uS
- ELECTRIC STRENGTH 2500VAC/1min.
- POWER LOSS (FULL LOAD) = 2.7W
- TERMINALS M4 SCREW CROSS/SLOT 2 x 2.5mm sq.
- WEIGHT 0.95kg
- BACK MOUNTING 4x M4
- SIDE MOUNTING 2x M6

TOTAL L = 10.3mH, X CAP = 3.3uF, Y CAP = 1.1uF, RES = 150K Ohm

FILTER MEASURED AT 1KHZ



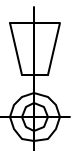
ATTENUATION

- COMMON MODE - 80dB AT 150KHz
- DIFFERENTIAL MODE - 50dB AT 150KHz
- DESIGNED TO MEET EN55022B (DOMESTIC)
- WHEN SCREENED MOTOR CABLE USED

CONSTRUCTION

- PERFORATED ALUMINIUM BODY FOR AIR COOLING,
- ALL COMPONENTS PCB MOUNTED

ALL DIMENSIONS IN MM / ANGLES IN DECIMAL DEGREES



ROXBURGH ELECTRONICS LTD

TITLE SINGLE PHASE 10A MAINS FILTER

CUSTOMER

REFERENCE

Drng No
MIF10-GS

GENERAL SPECIFICATION
FOR MIF10

Sheet 1 of 1 Aprvd Date: 03/02/00 Aprvd By: BFS Drwn by: BFS SCALE NTS C/N: --- Location: N:\DWG\GS\GS000162

ROXBURGH ELECTRONICS LTD, FOXHILLS INDUSTRIAL PARK, SCUNTHORPE, NORTH LINCOLNSHIRE, DN15 8QJ TEL +44 1724 281770 F +44 1724 270230