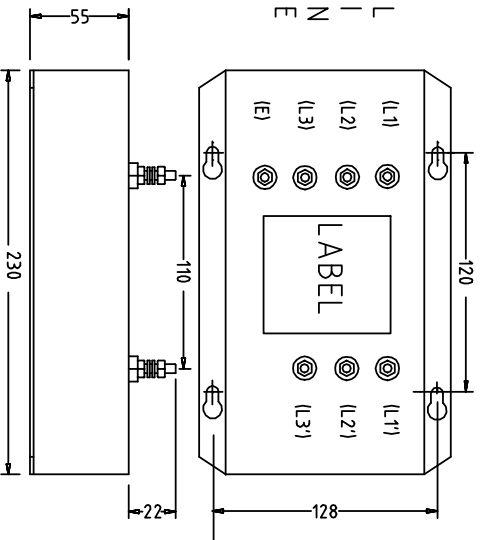
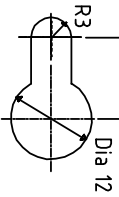
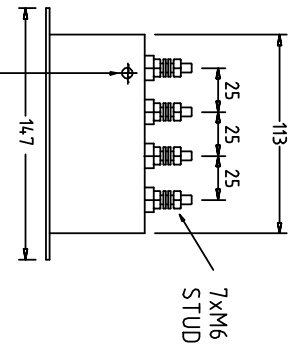


KEYWAY



MECHANICAL SPECIFICATION

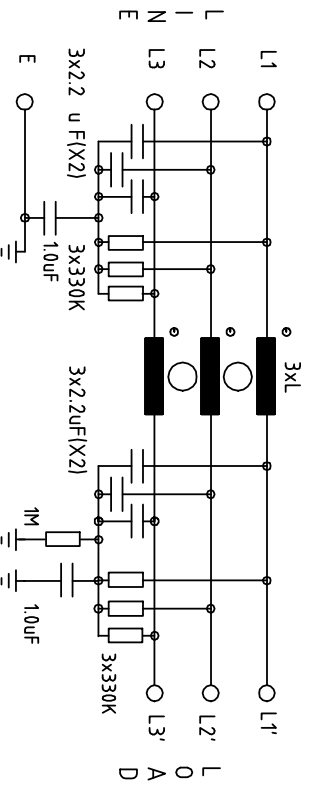


FIXING FOR SURGE ARRESTER (VSU3W)

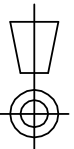
ELECTRICAL SPECIFICATION

RATED VOLTAGE 440/250V
 LINE FREQUENCY 50/60Hz
 TEMPERATURE RANGE -25 to 85 DegC
 TEST VOLTAGE 2.0KV DC
 LEAKAGE CURRENT 138mA AT 250V 50Hz
 WEIGHT 2.7Kg

ELECTRICAL SCHEMATIC



ALL DIMENSIONS IN MM / ANGLES IN DECIMAL DEGREES



ROXBURGH ELECTRONICS LTD

TITLE 3-WIRE M6 MOTOR DRIVE FILTER

DRG No
MDF3XX-M6-GS

REV
3
GENERAL SPECIFICATION
FOR MDF3XX-M6

CUSTOMER
REFERENCE

Sheet 1 of 1 | Aprvd Date 07/03/00 | Aprvd By SW | Drwn by BFS | SCALE NTS | CNN --- | Location N:\DWG\GS\GS000167

© ROXBURGH ELECTRONICS LTD, FOXHILLS INDUSTRIAL PARK, SCUNTHORPE, NORTH LINCOLNSHIRE, DN15 8QU | TEL +44 1724 281770 F +44 1724 270230

PRODUCT RANGE

TYPE	CURRENT I(RMS) @40°C	INDUCTANCE (L)	RESISTANCE (R) PER WINDING	MINIMUM INSERTION LOSS AT 150 KHZ	
				COMMON MODE	DIFFERENTIAL MODE
MDF318	18A	2.85mH	10.6mR	87dB	29dB
MDF325	25A	1.90mH	5.7mR	83dB	25dB
MDF336	36A	0.90mH	2.4mR	77dB	19dB
MDF350	50A	0.55mH	1.8mR	72dB	15dB