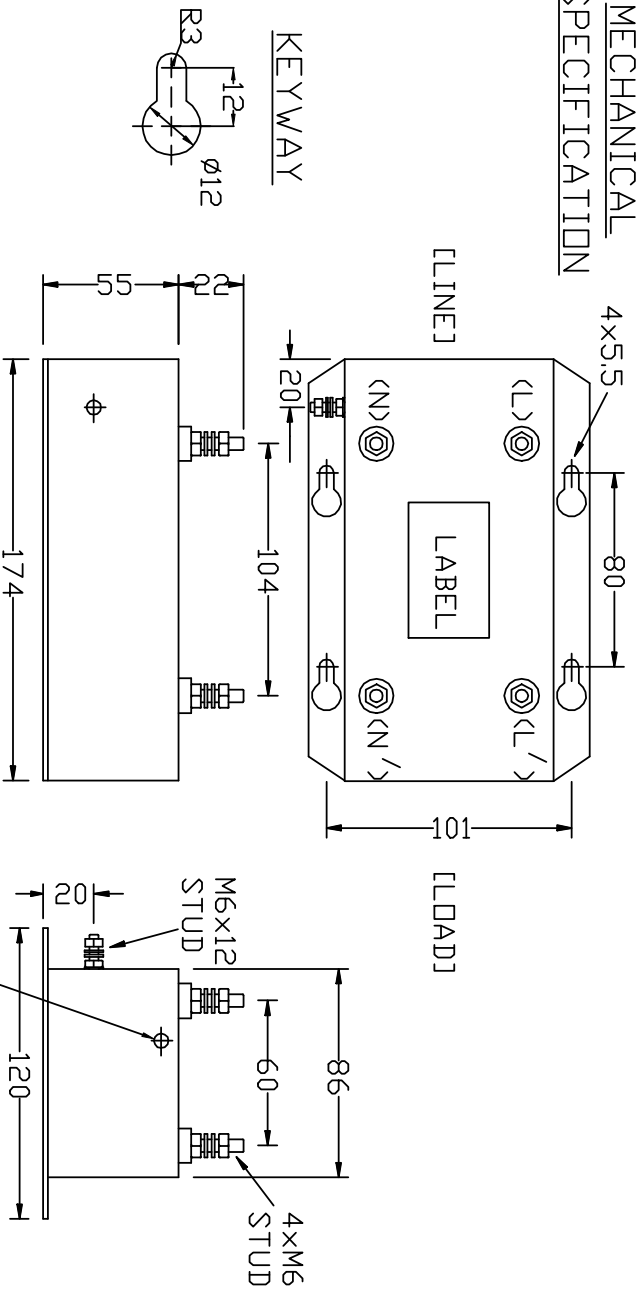


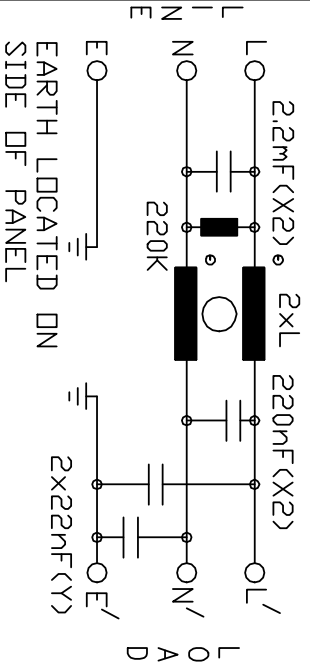
MECHANICAL SPECIFICATION



ELECTRICAL SPECIFICATION

RATED VOLTAGE 250V
 LINE FREQUENCY 50/60Hz
 TEMPERATURE RANGE -25 to 85 Degc
 TEST VOLTAGE 2.0KV DC
 LEAKAGE CURRENT 2.1mA AT 250V 50HZ
 WEIGHT 1.75Kg

ELECTRICAL SCHEMATIC



PRODUCT RANGE

TYPE	CURRENT (IRMS) @40C	INDUCTANCE (L)	RESISTANCE (R) PER WINDING	STUD SIZE	INSERTION LOSS AT 150 KHZ	COMMON MODE DIFFERENTIAL MODE
IHF18	18A	6.40mH	15.0mR	M6	48dB	42dB
IHF25	25A	4.40mH	8.5mR	M6	45dB	39dB
IHF36	36A	2.50mH	3.8mR	M6	40dB	34dB
IHF50	50A	1.10mH	2.0mR	M8	33dB	27dB

ALL DIMENSIONS IN MM / ANGLES IN DECIMAL DEGREES



ROXBURGH ELECTRONICS LTD

TITLE ELECTRICAL AND MECHANICAL SPECIFICATION

Drng No IHFXX-GS

Rev 2

GENERAL SPECIFICATION FOR 2 WIRE IHF FILTER

CUSTOMER REFERENCE

Sheet 1 of 1 Aprvd Date Aprvd By SW Drwn by BFS SCALE N/A CNN Location N:\DWG\GS\GS000136
 © ROXBURGH ELECTRONICS LTD, FOXHILLS INDUSTRIAL PARK, SCUNTHORPE, NORTH LINCOLNSHIRE, DN15 8QU TEL +44 1724 281770 F +44 1724 270230