

Actual information about approvals can be found on  
<http://www.schurter.com/approvals>



without voltage selector



without voltage selector



with voltage selector

C14



70° C



Plug removal necessary for fuse replacement

### Description

- Panel Mount:  
Snap-in or screw-on mounting from front side
- 4 Functions:  
Inlet Protection class I, Fuseholder for fuse-links 5 x 20 mm 1- or 2-pole, with or without voltage selector (step switch), Line filter in standard and medical version
- Quick connect terminals
- Alternative: version without line filter [KEA](#)

### Characteristics

- All single elements are already wired
- Plug removal necessary for fuse-link replacement  
The fuse drawer "Fingerrip" can be removed by hand  
For added safety "Extra-Safe" fuse drawers are available  
Fuse drawer meets requirements of medical standard IEC/EN 60601-1  
The fuseholder is accessible from the equipment front
- Qualified for use in equipment according IEC/EN 60950

### Other versions on request

- medical version M80

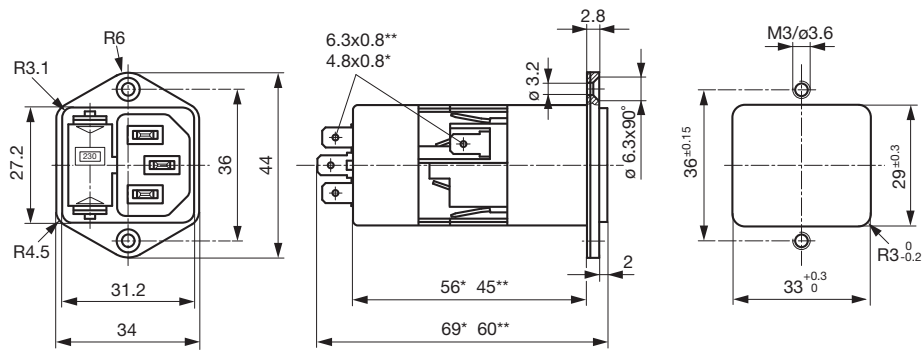
### Technical Data

Ratings IEC	1 - 10 A @ Ta 40 °C / 250 VAC; 50 Hz
Ratings UL/CSA	1 - 10 A @ Ta 40 °C / 125 VAC; 60 Hz
Leakage current	standard < 0.5 mA (250 V / 60 Hz) medical < 5 µA (250 V / 60 Hz)
Dielectric Strength	> 1.7 kVDC between L-N > 2.7 kVDC between L/N-PE Test voltage (2 sec)
Allowable operation temp.	-25 °C to 85 °C
Climatic Category	25/085/21, IEC 60068-1
Degree of Protection	from front side IP 40 acc. to IEC 60529
Protection Class	Suitable for appliances with protection class I acc. to IEC 61140
Terminals	Quick connect terminals 6.3 x 0.8 mm With voltage selector: quick-connect terminals 4.8 x 0.8 mm
Panel Thickness s	Screw-on: max 8 mm Mounting screw torque max 0.5 Nm Snap-In: 0.8 mm to 3 mm
Material: Housing	Thermoplastic, Black, UL 94V-0

Appliance-inlet /-outlet	C14 acc. to IEC/EN 60320-1, UL 498, CSA C22.2 no. 42 (for cold condition) pin-temperature 70 °C, 10 A, Protection class I
Voltage selector	optional, step, 3 digits
Line filter	Standard and medical version, IEC 60939, IEC 60601-1, UL 1283, UL 544, EN 133 200, CSA C22.2 no. 8 Technical details <a href="#">GENERAL PRODUCT INFORMATION</a>

Dimensions

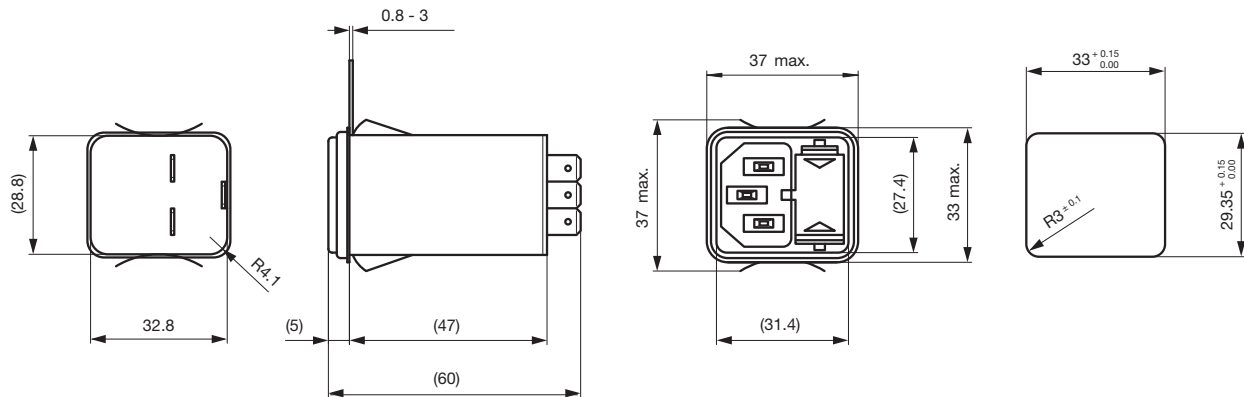
Screw-on mounting



\* with voltage selector

\*\* without voltage selector

Snap-in mounting

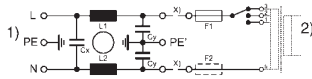


Technical Data of Filter-Components

Rated Current [A]	Filter-Type	Inductances	Capacitance	Capacitance	R [MΩ]
		L [mH]	CX [nF]	CY [nF]	
1	Standard Version	2 x 10	68	2.2	
2	Standard Version	2 x 4	68	2.2	
4	Standard Version	2 x 1.5	68	2.2	
6	Standard Version	2 x 0.8	68	2.2	
10	Standard Version	2 x 0.3	68	2.2	
1	Medical Version (M5)	2 x 10	68		1
2	Medical Version (M5)	2 x 4	68		1
4	Medical Version (M5)	2 x 1.5	68		1
6	Medical Version (M5)	2 x 0.8	68		1
10	Medical Version (M5)	2 x 0.3	68		1
2	Medical Version (M80)	2 x 4	68	2.2	1
4	Medical Version (M80)	2 x 1.5	68	2.2	1

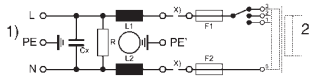
**Diagrams**

Standard version  
with fuseholder 1- or 2-pole



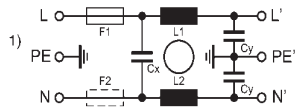
1) Line; 2) Load; x) external connection to be made by the customer

Medical version  
with fuseholder 2-pole



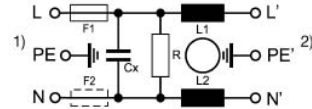
1) Line; 2) Load; x) external connection to be made by customer

Standard version  
without voltage selector



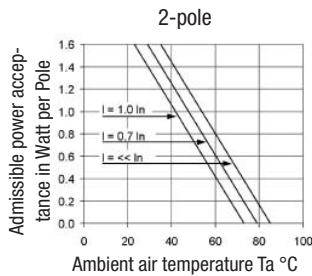
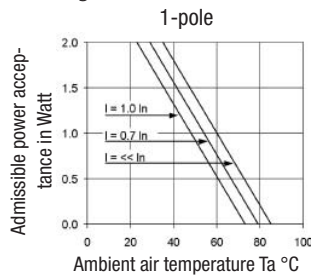
1) Line  
2) Load

Medical version  
without voltage selector



1) Line  
2) Load

**Derating curves**

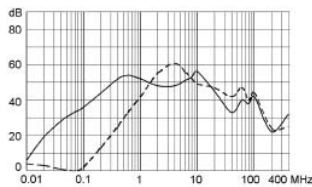


**Attenuation loss**

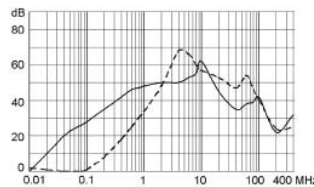
--- differential mode    \_\_\_\_ common mode

Standard version

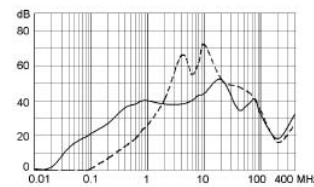
1 A



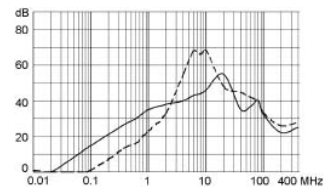
2 A



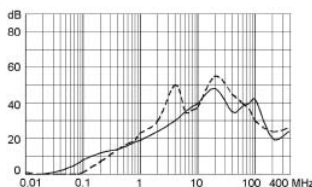
4 A



6 A

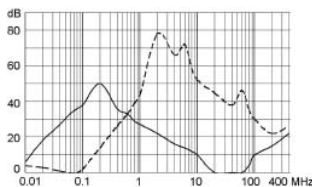


10 A

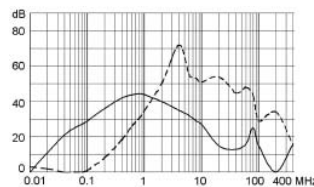


Medical version

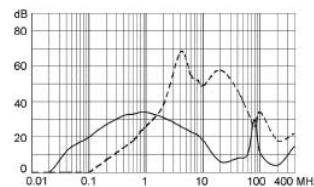
1 A



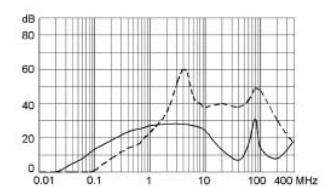
2 A



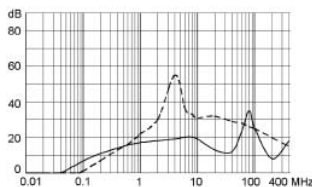
4 A



6 A



10 A



## Variants

Fuse drawer must be ordered separately (See accessories).

Order Number	Rated Current [A]	Filter-Type	Panel mounting	Fuseholder	Voltage selector
4301.6011	1	Standard Version	Snap-In	1-pole	
4301.6012	2	Standard Version	Snap-In	1-pole	
4301.6013	4	Standard Version	Snap-In	1-pole	
4301.6014	6	Standard Version	Snap-In	1-pole	
4301.6015	10	Standard Version	Snap-In	1-pole	
4301.6001	1	Standard Version	Snap-In	2-pole	
4301.6002	2	Standard Version	Snap-In	2-pole	
4301.6003	4	Standard Version	Snap-In	2-pole	
4301.6004	6	Standard Version	Snap-In	2-pole	
4301.6005	10	Standard Version	Snap-In	2-pole	
4301.5011	1	Standard Version	Screw-on	1-pole	
4301.5051	1	Standard Version	Screw-on	1-pole	3 digits
4301.5012	2	Standard Version	Screw-on	1-pole	
4301.5052	2	Standard Version	Screw-on	1-pole	3 digits
4301.5013	4	Standard Version	Screw-on	1-pole	
4301.5053	4	Standard Version	Screw-on	1-pole	3 digits
4301.5014	6	Standard Version	Screw-on	1-pole	
4301.5054	6	Standard Version	Screw-on	1-pole	3 digits
4301.5015	10	Standard Version	Screw-on	1-pole	
4301.5055	10	Standard Version	Screw-on	1-pole	3 digits
4301.5001	1	Standard Version	Screw-on	2-pole	
4301.5041	1	Standard Version	Screw-on	2-pole	3 digits
4301.5002	2	Standard Version	Screw-on	2-pole	
4301.5042	2	Standard Version	Screw-on	2-pole	3 digits
4301.5003	4	Standard Version	Screw-on	2-pole	
4301.5043	4	Standard Version	Screw-on	2-pole	3 digits
4301.5004	6	Standard Version	Screw-on	2-pole	
4301.5044	6	Standard Version	Screw-on	2-pole	3 digits
4301.5005	10	Standard Version	Screw-on	2-pole	
4301.5045	10	Standard Version	Screw-on	2-pole	3 digits
4301.6201	1	Medical Version (M5)	Snap-In	2-pole	
4301.6203	2	Medical Version (M5)	Snap-In	2-pole	
4301.6205	4	Medical Version (M5)	Snap-In	2-pole	
4301.5217	6	Medical Version (M5)	Screw-on	1-pole	
4301.5241	1	Medical Version (M5)	Screw-on	2-pole	3 digits
4301.5243	2	Medical Version (M5)	Screw-on	2-pole	3 digits
4301.5245	4	Medical Version (M5)	Screw-on	2-pole	3 digits
4301.5247	6	Medical Version (M5)	Screw-on	2-pole	3 digits
4301.5209	10	Medical Version (M5)	Screw-on	2-pole	
4301.5249	10	Medical Version (M5)	Screw-on	2-pole	3 digits
4301.6206	4	Medical Version (M80)	Snap-In	2-pole	
4301.5244	2	Medical Version (M80)	Screw-on	2-pole	3 digits
4301.5206	4	Medical Version (M80)	Screw-on	2-pole	

Packaging unit 10 Pcs