

## Two-stage PCB filter

## FN 410

- 0.5-6A current ratings
- High attenuation 2-stage design
- PCB-mounting
- Nennströme von 0,5 bis 6A
- Zweistufen-Design mit hoher Dämpfung
- Printmontage
- Courants de service de 0,5 à 6A
- Haute atténuation avec cellule double
- Montage sur circuit imprimé



### Filter selection table

Choose the family **FN xxx** with the required current rating and features, and add **/??** to determine input/output (line/load) connection style. Example: FN 410-6/02 is a 6A filter with pin connections.

### Approvals



Family	Connections	Current ratings A at 40°C (25°)	Inductance L/L <sub>1</sub> mH	Housing	Weight g
FN 410 -0.5 /??	/02	0.5 (0.6)	24/24	E1	85
FN 410 -1 /??	/02	1 (1.2)	10/10	E1	85
FN 410 -3 /??	/02	3 (3.6)	2/2	E1	85
FN 410 -6 /??	/02	6 (6.9)	0.8/0.8	E1	85

### Additional specifications

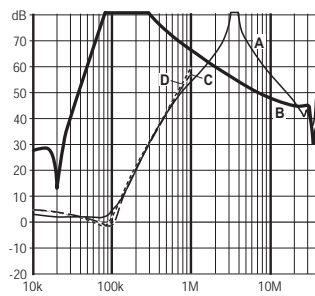
Filter type	Capacitance		Maximum leakage μA/phase	Maximum operating voltage		Operating frequency Hz	Hipot test voltage	
	C <sub>x</sub> nF	C <sub>y</sub> nF		VAC	Hz		PN→E VAC	P→N VAC
Standard types	33	2.2	210	250	50/60	DC to 400	2000	760

MTBF at 40°C, 230V, per Mil-HB-217F: 675,000 hours.

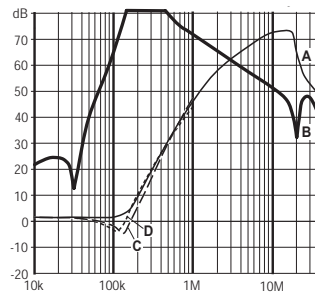
## FN 410 insertion loss

Per CISPR 17; A = 50Ω/50Ω sym, B = 50Ω/50Ω asym, C = 0.1Ω/100Ω sym, D = 100Ω/0.1Ω sym

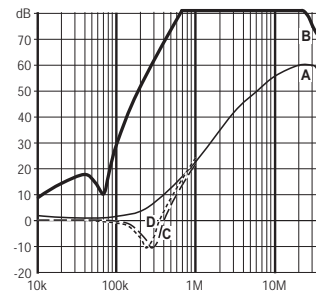
### 0.5 amp types



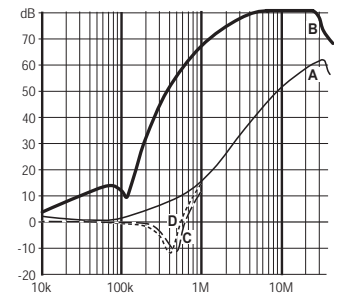
### 1 amp types



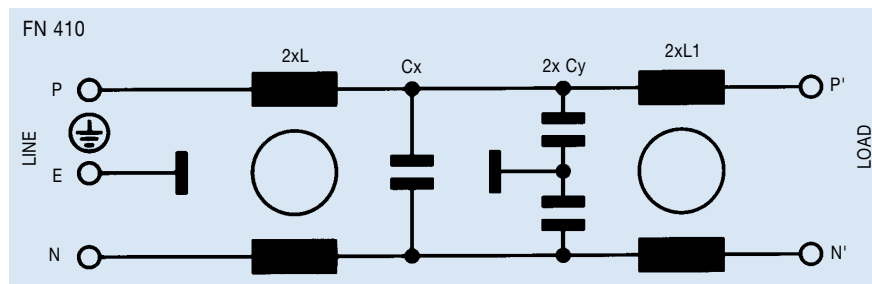
### 3 amp types



### 6 amp types



## Electrical schematic

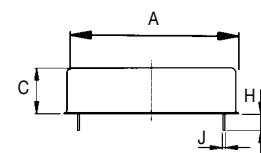


See tables for component values.

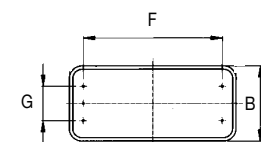
## Mechanical data

		Tol. mm
<b>A</b>	72	± 0.8
<b>B</b>	33	± 1
<b>C</b>	19	± 0.5
<b>F</b>	60	± 0.2
<b>G</b>	15	± 0.2
<b>H</b>	7	± 0.5
<b>J</b>	∅0.8	± 0.1

### Side view



### Bottom view



All dimensions in mm; 1 inch = 25.4 mm