

Single-phase PCB-filter for DC/DC converters

FN 409

- 3 to 13A current ratings
 - Very compact PCB-mounting design
 - Designed for DC/DC converters, IT- and telecom-applications
 - Exceptional attenuation performance
- Nennströme von 3 bis 13A
 - Sehr kompaktes Printmontage-Design
 - Geeignet für DC/DC Konverter, IT- und Telecom-Anwendungen
 - Hervorragende Dämpfungseigenschaften
- Courants de service de 3 à 13A
 - Conception très compact pour montage sur circuit imprimé
 - Conçu pour des convertisseurs DC/DC, IT- et télécom applications
 - Caractéristiques d'atténuation exceptionnelles



Filter selection table

Choose the family FN 409 with the required current rating.

Example: FN 409-13-02 is a PCB-mounting filter, rated for 13A, with PCB-pin connections.

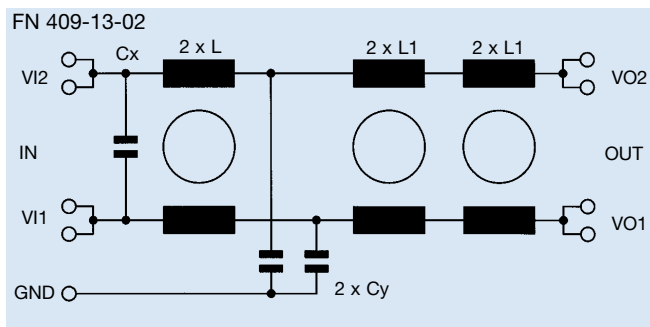
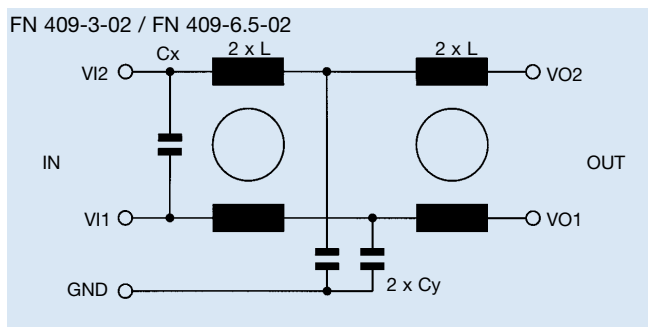
Family	Connections	Current ratings at 50°C (40°)		Inductance		Capacitance		Weight g
		A	(40°)	L mH	L1	Cx nF	Cy nF	
FN 409-3 -02	/02	3	(3.2)	2.9		4700	4.7	30
FN 409-6.5 -02	/02	6.5	(7)	0.5		4700	4.7	30
FN 409-13 -02	/02	13	(14)	0.08	0.18	4700	4.7	47

Additional specifications

Filter type	Maximum leakage µA/phase	Maximum operating voltage VDC	Operating frequency Hz	Hipot test voltage		Temperature range °C
				V11/V12 → GND VDC	V11 → V12 VDC	
Standard types		75	DC	2000	100	-40 to +100

MTBF at 40°C, 75V, per Mil-HB-217F: 4'450'000 hours

Electrical schematics

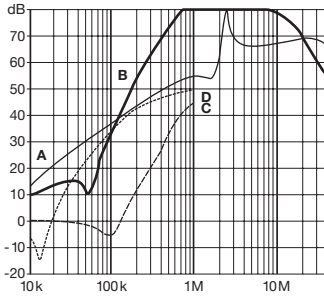


See tables for component values

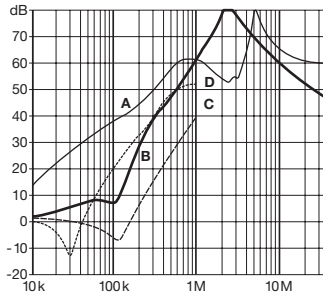
FN 409 insertion loss

Per CISPR 17; A = 50Ω/50Ω sym, B = 50Ω/50Ω asym, C = 0.1Ω/100Ω sym, D = 100Ω/0.1Ω sym

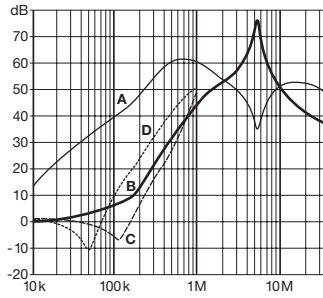
3 amp type



6.5 amp type

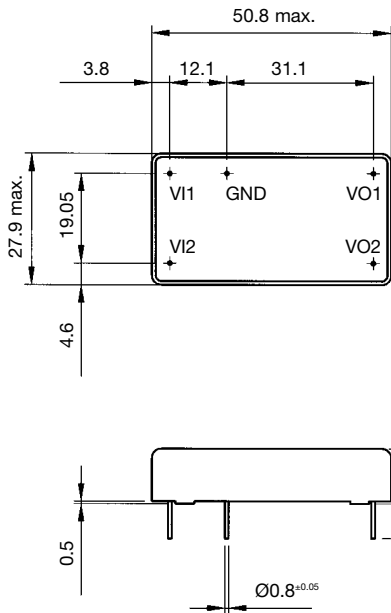


13 amp type

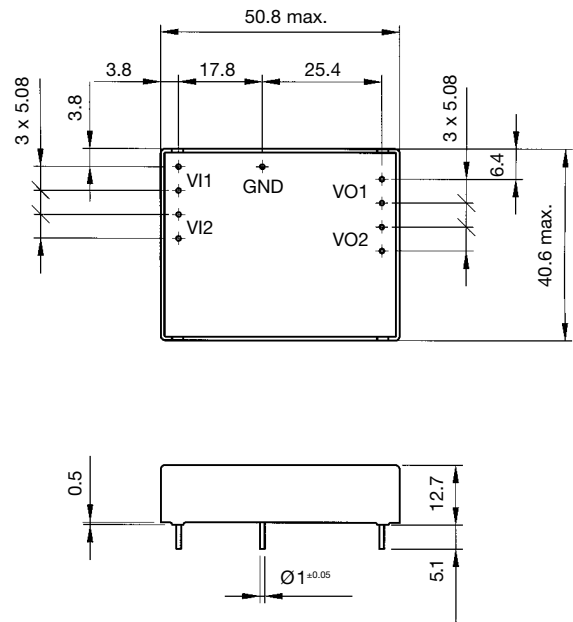


Mechanical data

3/6.5 amp type



13 amp type



All dimensions in mm; 1 inch = 25.4 mm
For dimensions without tolerance: ISO2768-m / EN22768-m