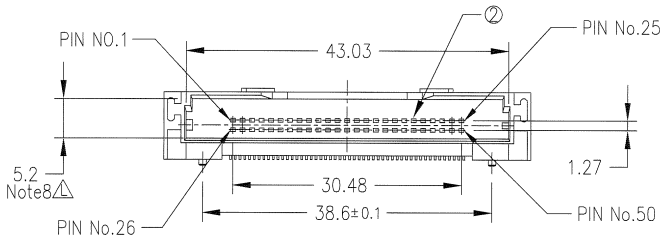
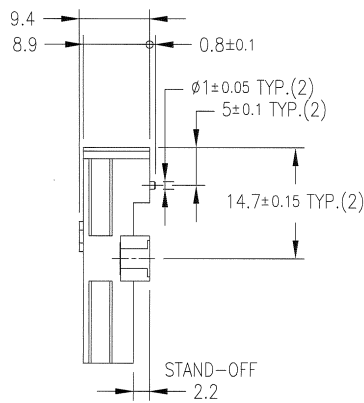
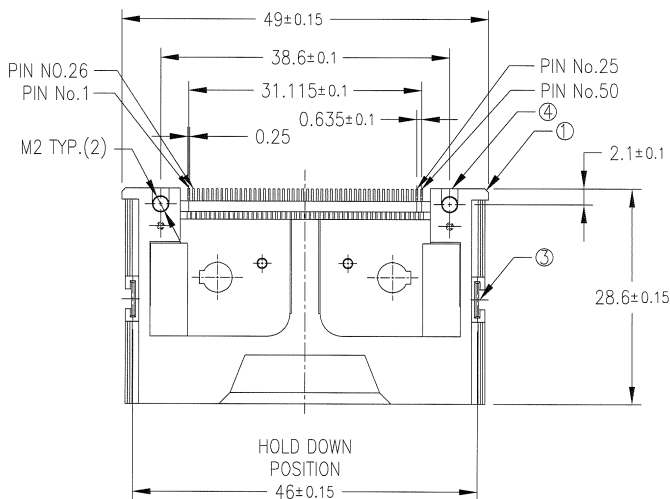
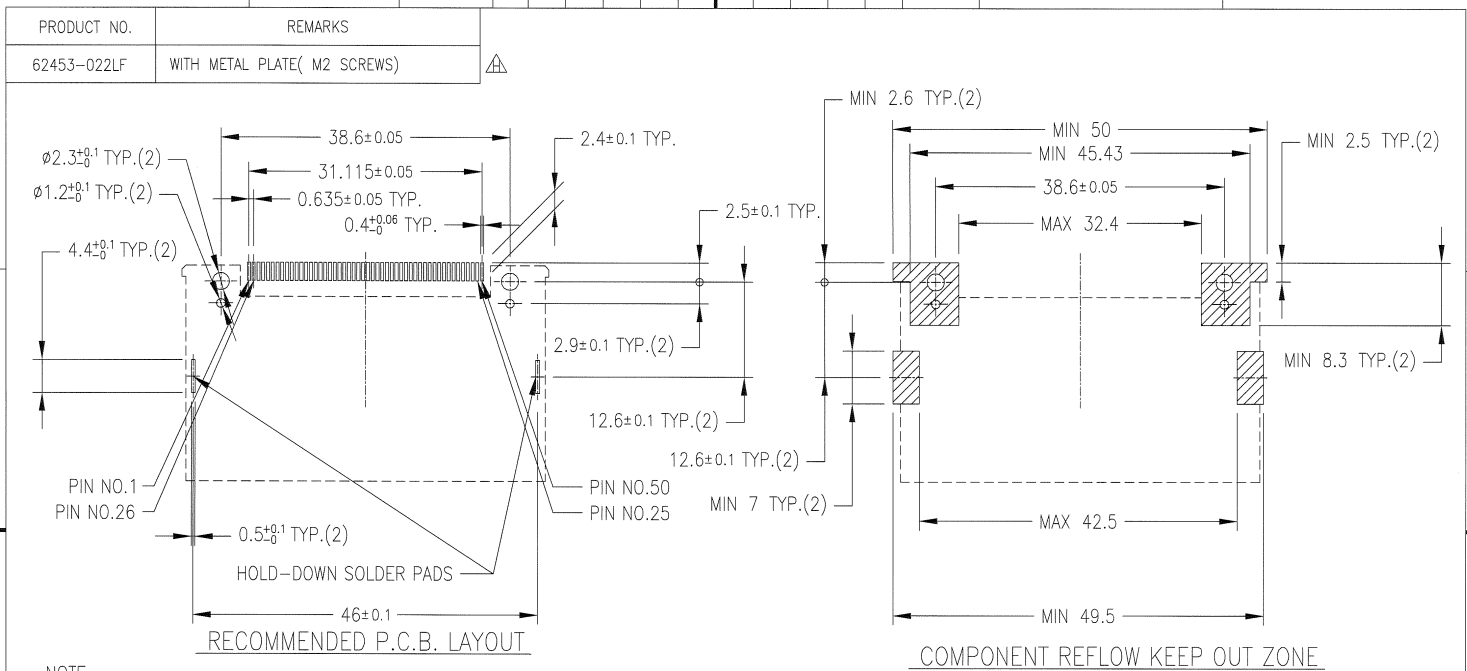


PRODUCT NO.	REMARKS
62453-022LF	WITH METAL PLATE( M2 SCREWS)



COMPONENT	MATERIAL	FINISH	QTY.
① HOUSING	FLAME RETARDANT RESIN	NONE (BLACK)	1
② PIN	PHOSPHOR BRONZE	UNDER : 1.0µm MIN. Ni CONTACT AREA : 0.2µm MIN. Au SOLDER TAIL : 0.05µm MIN. Au	50
③ HOLD DOWN	PHOSPHOR BRONZE	UNDER : 1.27µm MIN. Ni SOLDER TAIL : 2.0µm MIN. Sn	2
④ METAL PLATE	BRASS	2µm MIN. Ni	2

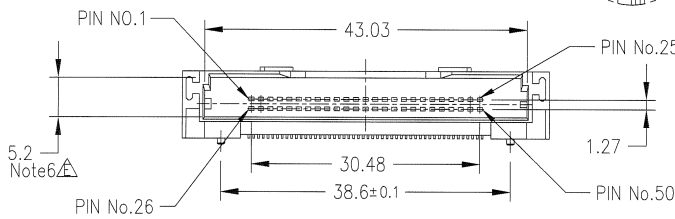
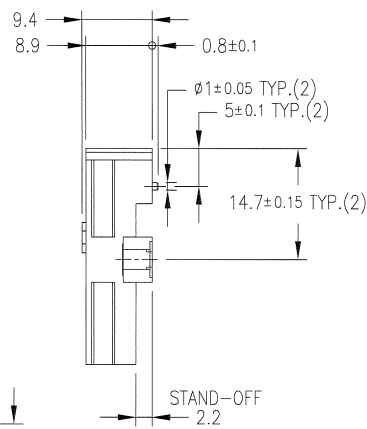
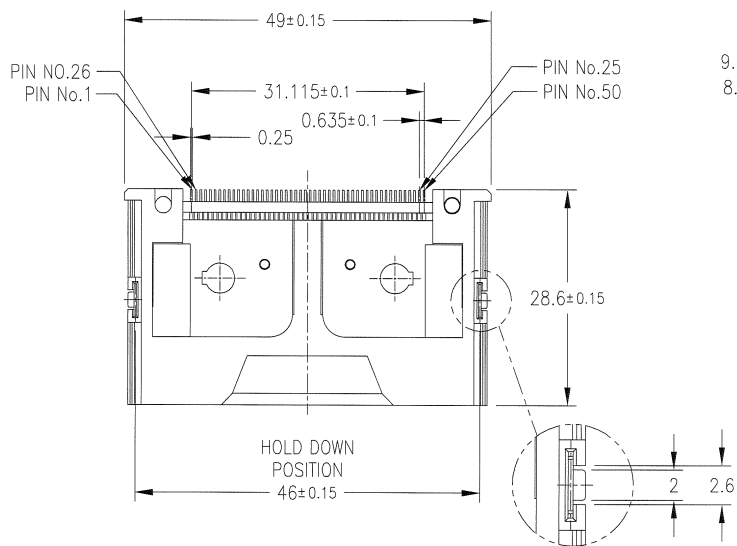
ltr	description	ecn no	dr	date	surface	tolerance	projection	product family	CODE
F	ADDED SHEET	J04-0061	HS	2/19/04	ISO 1302	ISO 408	ISO 1101	5AZF - CF HEADER	JP
G	ADDED SHEET	J05-0357	M.H	6/16/05	tolerances unless otherwise specified	0.X ±0.3	mm	title	
H	REVISED	J05-0748	R.S	10/31/05	angles	linear 0.XX ±0.3	scale 2:1	COMPACT FLASH HDR	
J	REVISED	J06-0315	R.S	8/1/06	0°±2'	0.XXX ±0.3		TOP MOUNT	
K	REVISED	J06-0399	R.S	10/20/06	dr	S.WATANABE 7/28/08		dwg no	sheet 1 of 8 size
L	REVISED	J08-0316	S.W	7/28/08	enr	S.WATANABE 7/28/08		62453	A3
					chr	1/28/08 2008-7-27		type	Product Customer Drawing
					app	1/28/08 2008-7-27		Rev.	
sheet index	revision sheet	L J E E E E	1 2 3 4 5 6	7 8					



- NOTE
- 1.PRODUCT SPECIFICATION : 110-404
  - 2.PACKAGING SPECIFICATION : GES-14-620
  - 3.RECOMMENDED TIGHTENING TORQUE : 0.127N.m [1.3kgf.cm]
  - 4.SOLDER TAIL CO-PLANARITY : MAX 0.1
  - 5.RECOMMENDED HOLD-DOWN SCREW  
M 2mm X 6mm SCREWS  
FOR 0.062in/1.57mm THICK PCB
  - 6.FOR LEAD FREE P/N, THE PRODUCT MEETS EUROPEAN UNION DIRECTIVES AND OTHER COUNTRY REGULATIONS AS DESCRIBED IN GS-22-008.
  - 7.THE HOUSING WILL WITHSTAND EXPOSURE TO 260°C PEAK TEMPERATURE FOR 10 SECONDS IN A CONVENTION, INTRA-RED OR VAPOR PHASE REFLOW OVEN.
  - 8.MEASURED AT THE BOTTOM.

mat'l. code				surface		tolerance	projection	product family	CODE
---				ISO 1302	ISO 406	ISO 1101	ISO 1101	5AZF - CF HEADER	JP
ltr	description	ecn no	dr	date	tolerances unless otherwise specified	angles	linear	title	
D	REVISED	V20696	HS	5/15/02	0.X	±0.3	mm	COMPACT FLASH HDR	
E	ADDED SHEET	3,4	HS	12/25/02	0.XX	±0.3	mm	TOP MOUNT	
F	REVISED	J05-0748	R.S	10/31/06	0.XXX	±0.3	scale 2:1	dwg no	
G	REVISED	J06-0315	R.S	8/1/06	S.WATANABE	7/28/08		sheet 2 of 8 size	
H	REVISED	J06-0399	R.S	10/20/08	S.WATANABE	7/28/08		62453	
J	REVISED	J08-0316	S.W	7/28/08	chr	2008-7-29		A3	
sheet index		revision sheet			appd	J. Watanabe	2008-7-29	type Product Customer Drawing	
								Rev. J	

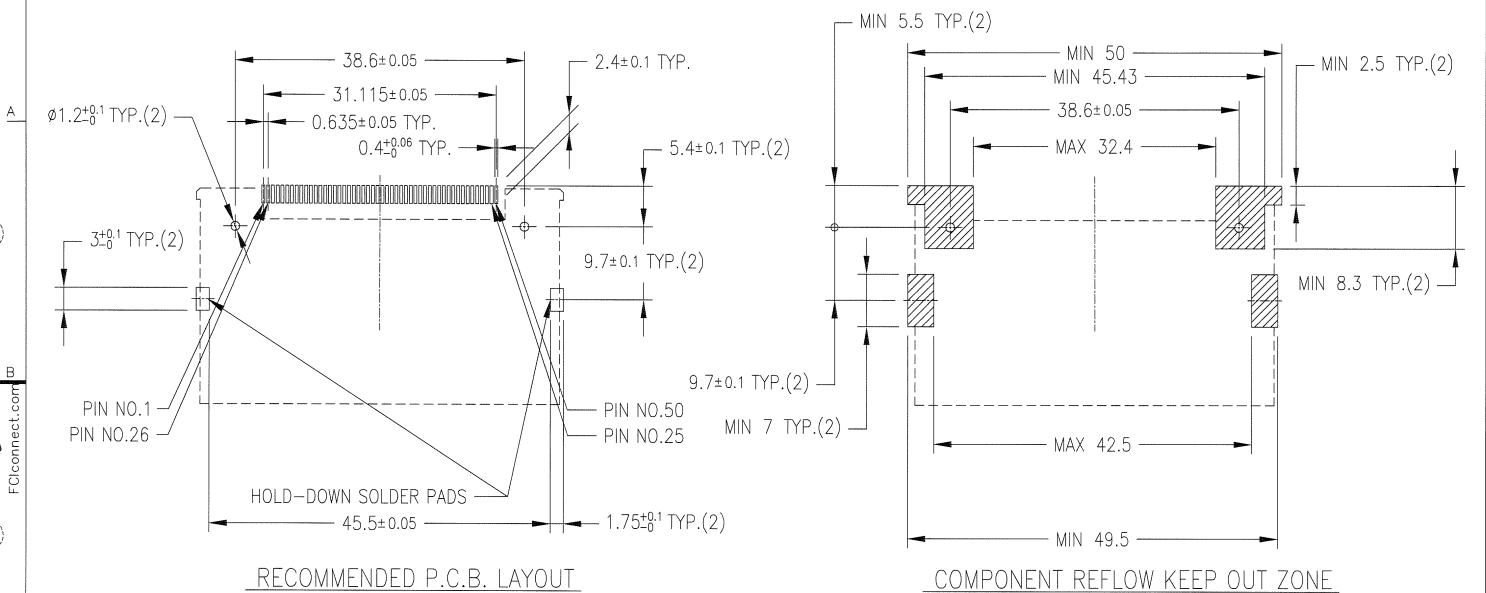
PRODUCT NO.	REMARKS
62453-122LF	WITHOUT METAL PLATE(M2 SCREWS)



COMPONENT	MATERIAL	FINISH	QTY.
① HOUSING	FLAME RETARDANT RESIN	NONE (BLACK)	1
② PIN	PHOSPHOR BRONZE	UNDER : 1.0 $\mu$ m MIN. Ni CONTACT AREA : 0.2 $\mu$ m MIN. Au SOLDER TAIL : 0.05 $\mu$ m MIN. Au	50
③ HOLD DOWN	PHOSPHOR BRONZE	UNDER : 1.27 $\mu$ m MIN. Ni SOLDER TAIL : 2.0 $\mu$ m MIN. Sn	2

ltr	description	ecn no	dr	date	surface	tolerance	projection	product family	CODE
A	RELEASED	J20659	HS	2/18/04	ISO 1302	ISO 206	ISO 1101	5AZF - CF HEADER	JP
B	REVISED	J05-0748	R.S	10/31/05	tolerances unless otherwise specified	0.X	mm	COMPACT FLASH HDR	
C	REVISED	J06-0315	R.S	8/1/06	angles	linear	0.XXX	TOP MOUNT	
D	REVISED	J06-0399	R.S	10/20/06	0'±2'	0.XXX	±0.3	scale 2:1	
E	REVISED	J08-0316	S.W	7/28/08	dr	S.WATANABE	7/28/08	FCJ	dwg no
					chr	S.WATANABE	7/28/08		sheet 3 of 8
					appd	J. Nakamura	2008-7-27		size
									A3
sheet	revision							type	Product Customer Drawing
index	sheet								Rev. E

PRODUCT NO.	REMARKS
62453-122LF	WITHOUT METAL PLATE(M2 SCREWS)

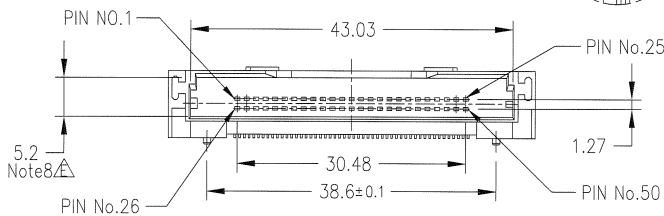
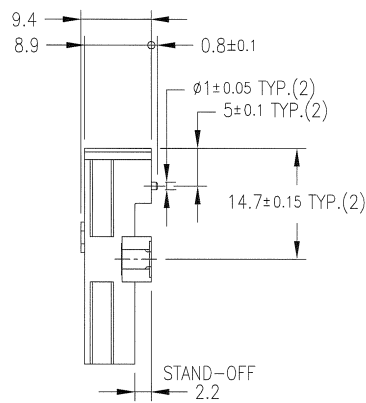
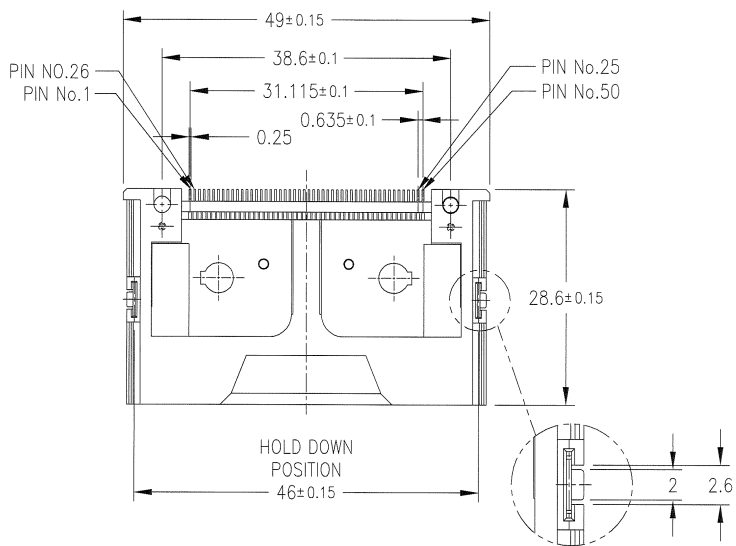


**NOTE**

- 1.PRODUCT SPECIFICATION : 110-404
- 2.PACKAGING SPECIFICATION : GES-14-620
- 3.SOLDER TAIL CO-PLANARITY : MAX 0.1
- 4.FOR LEAD FREE P/N, THE PRODUCT MEETS EUROPEAN UNION DIRECTIVES AND OTHER COUNTRY REGULATIONS AS DESCRIBED IN GS-22-008.
- 5.THE HOUSING WILL WITHSTAND EXPOSURE TO 260°C PEAK TEMPERATURE FOR 10 SECONDS IN A CONVENTION, INTRA-RED OR VAPOR PHASE REFLOW OVEN.
- 6.MEASURED AT THE BOTTOM.

mat'l. code				surface		ISO 1302	tolerance	ISO 408	projection	product family	CODE
---				ISO 1101		ISO 1101	ISO 1101	ISO 1101	ISO 1101	5AZF - CF HEADER	JP
ltr	description	ecn no	dr	date	tolerances unless otherwise specified	angles	linear	0.X ±0.3	mm	title	
1	RELEASED		HS	9/12/02				0.XX ±0.3		COMPACT FLASH HDR	
A	RELEASED	J20659	HS	12/25/02				0.XXX ±0.3		TOP MOUNT	
B	REVISED	J05-0748	R.S	10/31/05	0°±2'			0.XXX ±0.3	scale 2:1	sheet 4 of 8 size	
C	REVISED	J06-0315	R.S	8/1/06	dr	S.WATANABE	7/28/08			A3	
D	REVISED	J06-0399	R.S	10/20/06	enrg	S.WATANABE	7/28/08			sheet 4 of 8 size	
E	REVISED	J08-0316	S.W	7/28/08	chr	S.WATANABE	2008-7-29			A3	
					appd	P. Okada	2008-7-29			sheet 4 of 8 size	
sheet index		revision sheet								type Product Customer Drawing	
										Rev. E	

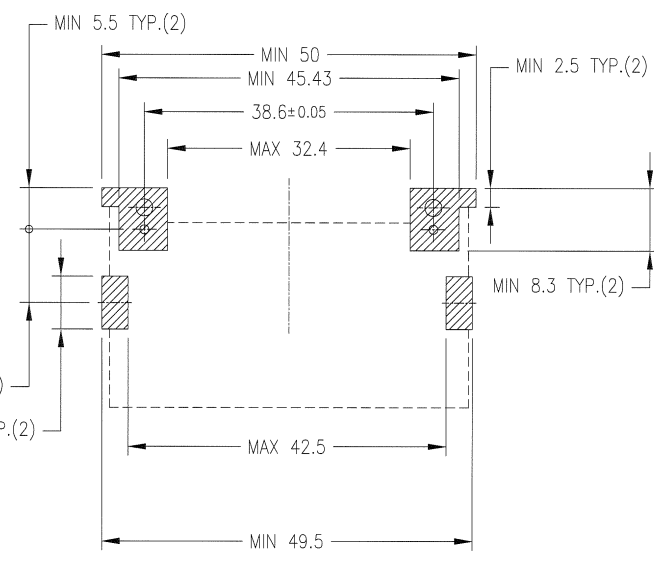
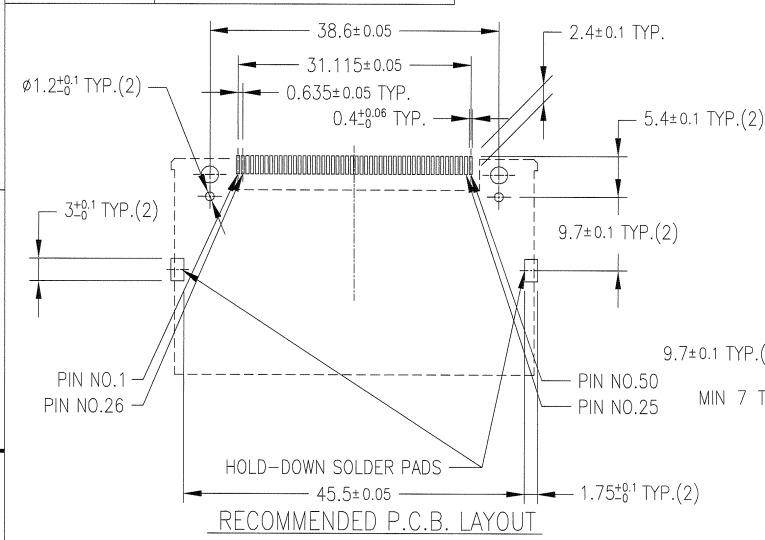
PRODUCT NO.	REMARKS
62453-222LF	WITH METAL PLATE( M2 SCREWS)



COMPONENT	MATERIAL	FINISH	QTY.
① HOUSING	FLAME RETARDANT RESIN	NONE (BLACK)	1
② PIN	PHOSPHOR BRONZE	UNDER : 1.0µm MIN. Ni CONTACT AREA : 0.2µm MIN. Au SOLDER TAIL : 0.05µm MIN. Au	50
③ HOLD DOWN	PHOSPHOR BRONZE	UNDER : 1.27µm MIN. Ni SOLDER TAIL : 2.0µm MIN. Sn	2
④ METAL PLATE	BRASS	2µm MIN. Ni	2

mat'l. code	---	surface	ISO 1302	tolerance	ISO 208	projection	product family	CODE
ltr	description	ecn no	dr	date	tolerances unless otherwise specified	ISO 1101	5AZF - CF HEADER	JP
A	RELEASED	J04-0061	YO	2/18/04	angles	0.X   ±0.3	title	
B	REVISED	J05-0748	R.S	10/31/05	linear	0.XXX   ±0.3	COMPACT FLASH HDR	
C	REVISED	J06-0315	R.S	8/1/06	0±2'	scale 2:1	TOP MOUNT	
D	REVISED	J06-0399	R.S	10/20/06	dr		dwg no	sheet 5 of 8 size
E	REVISED	J08-0316	S.W	7/28/08	enrg		62453	A3
				chr		S.WATANABE 7/28/08		
				appd		P. Watanabe 2008-7-29		
sheet	revision					type		Product Customer Drawing
index	sheet							Rev. E

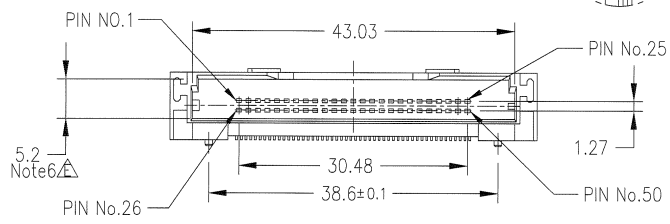
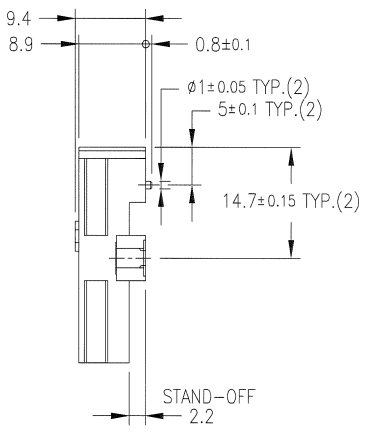
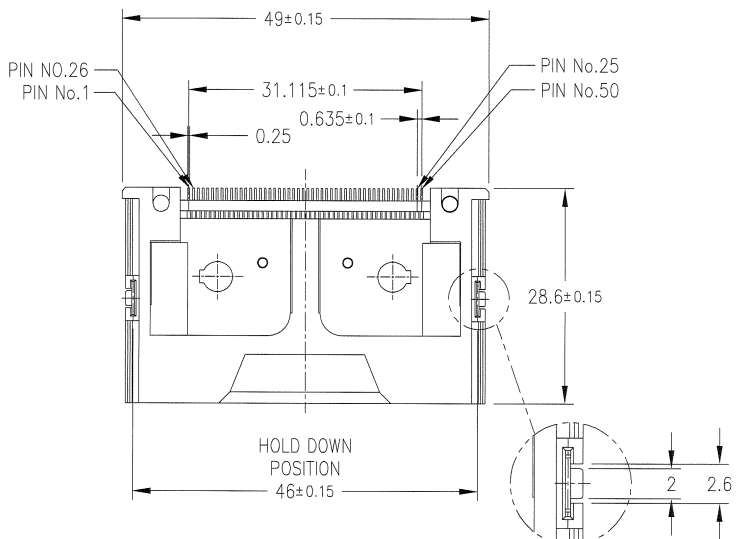
PRODUCT NO.	REMARKS
62453-222LF	WITH METAL PLATE( M2 SCREWS)



- NOTE
- 1.PRODUCT SPECIFICATION : 110-404
  - 2.PACKAGING SPECIFICATION : GES-14-620
  - 3.RECOMMENDED TIGHTENING TORQUE : 0.127N.m [1.3kgf.cm]
  - 4.SOLDER TAIL CO-PLANARITY : MAX 0.1
  - 5.RECOMMENDED HOLD-DOWN SCREW  
M 2mm X 6mm SCREWS(FCI P/N ; 95121-001)  
FOR 0.062in/1.57mm THICK PCB
  - 6.FOR LEAD FREE P/N, THE PRODUCT MEETS EUROPEAN UNION DIRECTIVES AND OTHER COUNTRY REGULATIONS AS DESCRIBED IN GS-22-008.
  - 7.THE HOUSING WILL WITHSTAND EXPOSURE TO 260°C PEAK TEMPERATURE FOR 10 SECONDS IN A CONVENTION, INTRA-RED OR VAPOR PHASE REFLOW OVEN.
  - 8.MEASURED AT THE BOTTOM.

mat'l. code				surface		tolerance	projection	product family	CODE
---				ISO 1302		ISO 406	ISO 1101	5AZF - CF HEADER	JP
ltr	description	ecn no	dr	date	tolerances unless otherwise specified		mm	title	
1	RELEASED		HS	9/12/02	angles	0.X   ±0.3	mm	COMPACT FLASH HDR	
A	RELEASED	J20659	HS	12/25/02	linear	0.XX   ±0.3	mm	TOP MOUNT	
B	REVISED	J05-0748	R.S	10/31/05	0°±2'	0.XXX   ±0.3	scale 2:1	dwg no	
C	REVISED	J06-0315	R.S	8/1/06	dr	S.WATANABE	7/28/08	sheet 6 of 8 size	
D	REVISED	J06-0399	R.S	10/20/06	engr	S.WATANABE	7/28/08	A3	
E	REVISED	J08-0316	S.W	7/28/08	chr	S.WATANABE	7/28/08	62453	
sheet index		revision sheet		appd		FCI		type Product Customer Drawing	
								Rev. E	

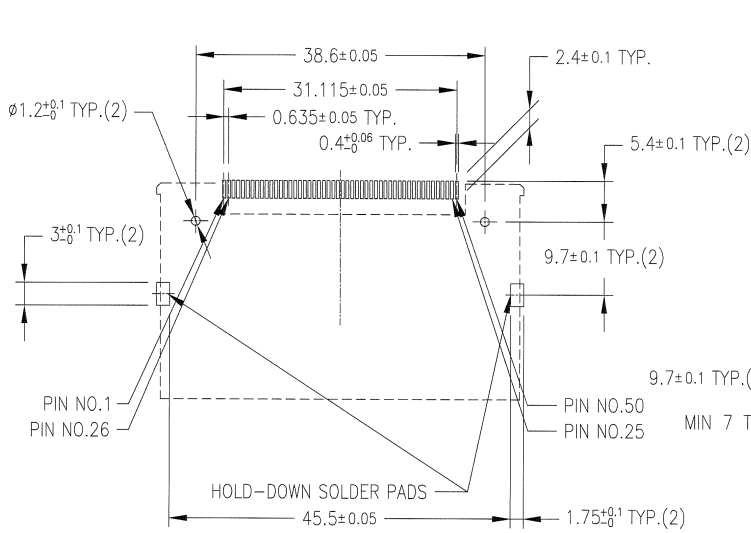
PRODUCT NO.	REMARKS
62453-622LF	WITHOUT METAL PLATE(M2 SCREWS)



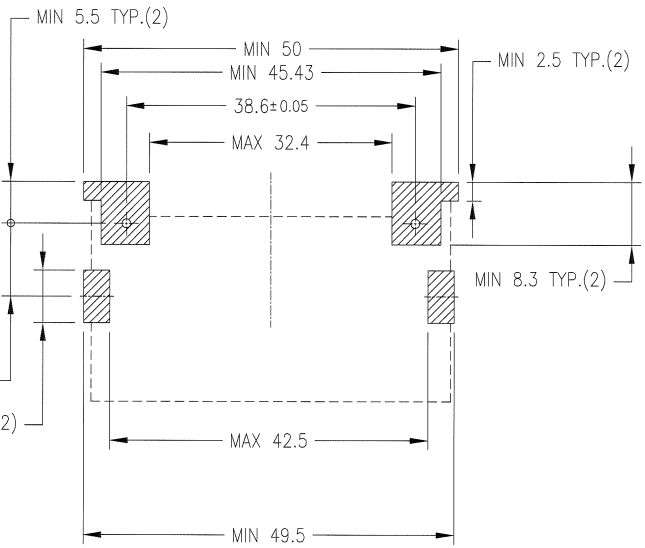
COMPONENT	MATERIAL	FINISH	QTY.
① HOUSING	FLAME RETARDANT RESIN	NONE (BLACK)	1
② PIN	PHOSPHOR BRONZE	UNDER : 1.0µm MIN. Ni CONTACT AREA : 0.76µm MIN. Au SOLDER TAIL : 0.05µm MIN. Au	50
③ HOLD DOWN	PHOSPHOR BRONZE	UNDER : 1.27µm MIN. Ni SOLDER TAIL : 2.0µm MIN. Sn	2

mat'l. code		surface	tolerance	projection	product family	CODE
---		ISO 1302	ISO 408	ISO 1101	5AZF - CF HEADER	JP
tolerances unless otherwise specified		angles	linear	mm	title	
A		0°±2'	0.XX ±0.3	scale 2:1	COMPACT FLASH HDR	
B			0.XXX ±0.3		TOP MOUNT	
C					dwg no	
D					sheet 7 of 8 size	
E					62453	
sheet index		revision	sheet		type	
1					Product Customer Drawing	
3					Rev. E	

PRODUCT NO.	REMARKS
62453-622LF	WITHOUT METAL PLATE(M2 SCREWS)



RECOMMENDED P.C.B. LAYOUT



COMPONENT REFLOW KEEP OUT ZONE

NOTE  
 1.PRODUCT SPECIFICATION : 110-404  
 2.PACKAGING SPECIFICATION : GES-14-620  
 3.SOLDER TAIL CO-PLANARITY : MAX 0.1  
 4.FOR LEAD FREE P/N, THE PRODUCT MEETS EUROPEAN UNION DIRECTIVES AND OTHER COUNTRY REGULATIONS AS DESCRIBED IN GS-22-008.  
 5.THE HOUSING WILL WITHSTAND EXPOSURE TO 260°C PEAK TEMPERATURE FOR 10 SECONDS IN A CONVENTION, INTRA-RED OR VAPOR PHASE REFLOW OVEN.  
 6.MEASURED AT THE BOTTOM.

mat'l. code		surface		tolerance	projection	product family	CODE
---		ISO 1302	ISO 406	ISO 1101	mm	5AZF - CF HEADER	JP
ltr	description	ecn no	dr	date	tolerances unless otherwise specified	title	
A	RELEASED	J05-0357	M.H	6/16/06	0.X ±0.3	COMPACT FLASH HDR	
B	REVISED	J05-0748	R.S	10/31/06	0.XXX ±0.3	TOP MOUNT	
C	REVISED	J06-0315	R.S	8/1/06	0±2'	scale 2:1	
D	REVISED	J06-0399	R.S	10/20/06	engr S.WATANABE	dwg no	sheet 8 of 8 size
E	REVISED	J06-0316	S.W	7/28/08	chr S.WATANABE	62453	A3
sheet index		revision sheet			appd	type	Product Customer Drawing
							Rev. E