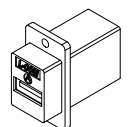
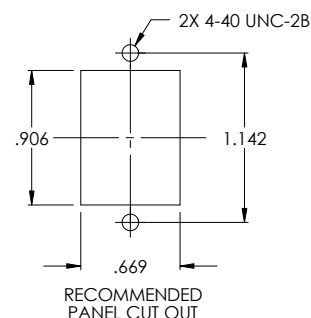
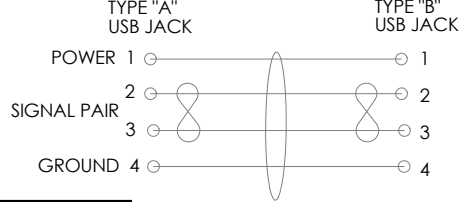
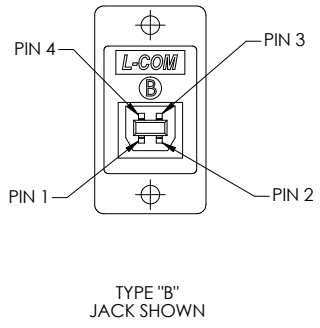
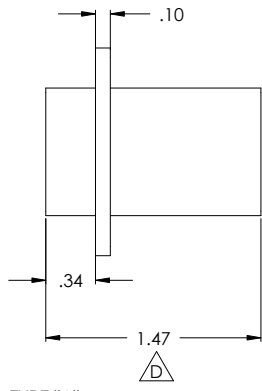
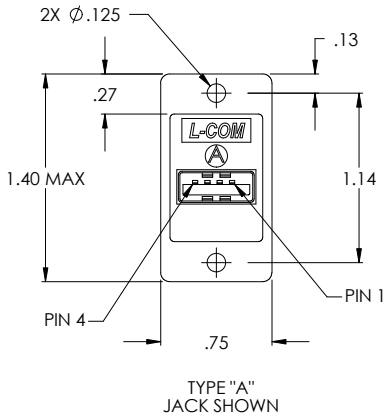


THE INFORMATION CONTAINED IN THIS DRAWING IS THE SOLE PROPERTY OF L-COM, INC. ANY REPRODUCTION IN PART OR WHOLE WITHOUT THE WRITTEN PERMISSION OF L-COM, INC. IS PROHIBITED.

REVISIONS			
REV	DESCRIPTION	DATE	APPROVED
A	RELEASED FOR PRODUCTION	05/04/01	MCCORMICK
B	ECN# 1313 PRODUCT VALIDATION. DELETED METRIC DIMENSIONS	02/27/03	DFP
C	ECN# 1405 ADDED COMPONENT SPECIFICATION TABLE	12/09/03	MCCORMICK
D	ECN#2082: CORRECTING LENGTH DIM.	05/24/05	MLAHEY



Component Specifications	
Material	
Housing	ABS 94V-0 Rating
Connector	Plastic; PBT with Glass Fiber
Contact	Brass
Shell	Brass
PCB	Epoxy Glass FP-4 94V-0 Rating
Finish	
Housing	Color; Ivory
Contact	Gold 30 Micro Inch
Shell	Nickel
Electrical	
Current Rating	2 AMP Max
Voltage Rating	140 VDC
Environmental	
Operating Temperature	-20°C to +80°C

CS-133

UNLESS OTHERWISE SPECIFIED, DIMENSIONS ARE IN INCHES:
 X ± .1
 XX ± .05
 XXX ± .005
 CABLE LENGTH TOLERANCE
 <300 ±5% >300 ±2%

APPROVALS		DATE	L-com CONNECTIVITY PRODUCTS		45 BEECHWOOD DRIVE NORTH ANDOVER, MA 01845
DRAWN BY	C.MCCORMICK	05/04/2001	PRODUCT DESCRIPTION		
CHECKED BY	D.PARHAM	05/04/2001	USB FEEDTHRU COUPLER		
APPROVED BY	R.CARRICK	05/04/2001	DRAWING TITLE		
CONFIGURATION DETAILS OF UNDIMENSIONED FEATURES MAY VARY			OUTLINE DRAWING		
SIZE	A	FSCM NO.	43321	DWG. NO.	ECF504-UAB-OD1
SCALE:	NONE	CAD FILE:	ECF504-UAB-OD1.SLDDRW	SHEET	1 OF 1