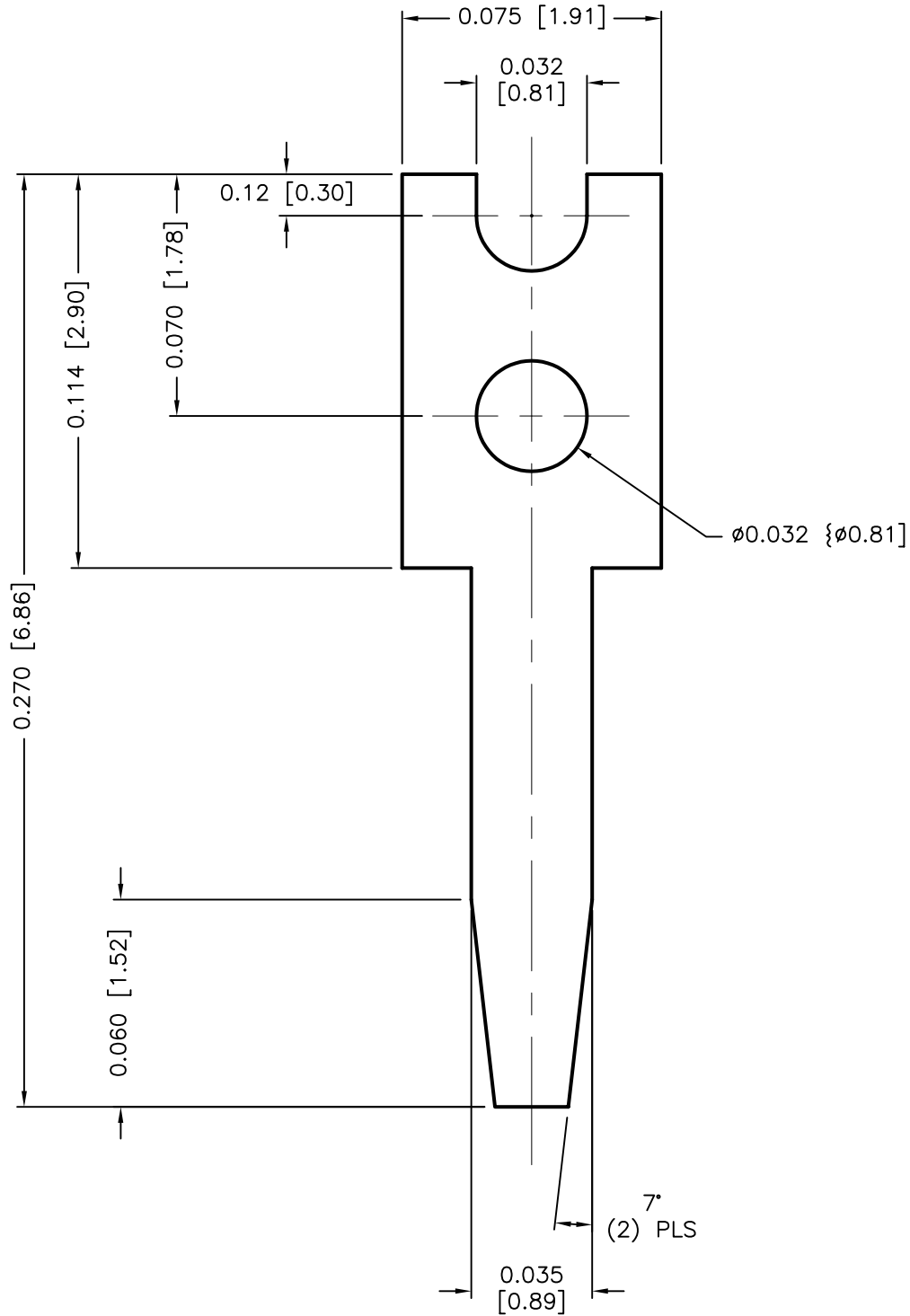


DCP #	REV	DESCRIPTION	DRAWN	DATE	CHECKD	DATE	APPRVD	DATE
564	A	RELEASED	D.J.C.	1/21/99	JC	1/22/99	JWM	1/29/99
1892	B	Update To RoHS Compliant	EO	3/14/06	HO	3/15/06	HO	3/15/06



RoHS Compliant



MATERIAL: 0.020 THICK BRASS ALLOY 260, TIN PLATE

SPC-F004.DWG

<p>TOLERANCES:</p> <p>UNLESS OTHERWISE SPECIFIED</p> <p>DECIMAL: ± 0.005 [± 0.15]</p> <p>ANGULAR $\pm 1/2^\circ$</p>	DRAWN BY:	DATE:	DRAWING TITLE:			
	DANIEL CAREY	1/21/99	PC TEST POINT TERMINAL			
	CHECKED BY:	DATE:	SIZE	DWG. NO.	ELECTRONIC FILE	REV
	JOHN COLE	1/22/99	A	8459-0685	16N961.dwg	B
	APPROVED BY:	DATE:	SCALE: NTS		U.O.M.: INCHES [mm]	
JEFF MCVICKER	1/29/99			SHEET: 1 OF 1		

ALL RIGHTS RESERVED. NO PORTION OF THIS PUBLICATION, WHETHER IN WHOLE OR IN PART CAN BE REPRODUCED WITHOUT THE EXPRESS WRITTEN CONSENT OF SPC TECHNOLOGY. DISCLAIMER: ALL STATEMENTS AND TECHNICAL INFORMATION CONTAINED HEREIN ARE BASED UPON INFORMATION AND/OR TESTS WE BELIEVE TO BE ACCURATE AND RELIABLE. SINCE CONDITIONS OF USE ARE BEYOND OUR CONTROL, THE USER SHALL DETERMINE THE SUITABILITY OF THE PRODUCT FOR THE INTENDED USE AND ASSUME ALL RISK AND LIABILITY WHATSOEVER IN CONNECTION THEREWITH.