

Customer Information Sheet

DRAWING No.: P25-XX23

SHEET 2 OF 2

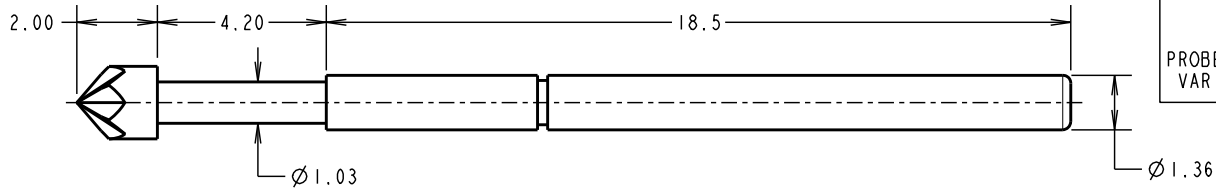
IF IN DOUBT - ASK

(C)

NOT TO SCALE

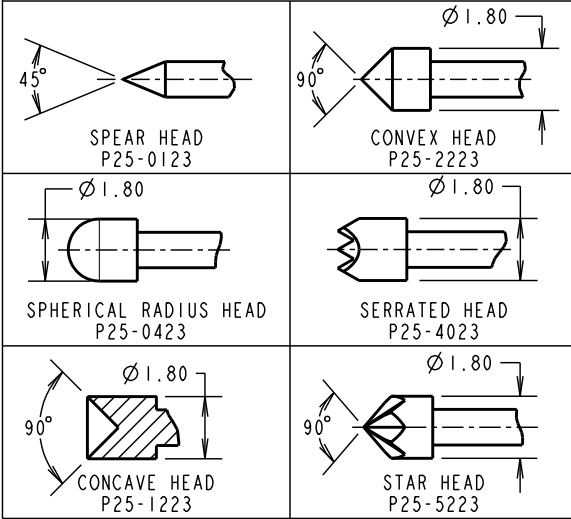
THIRD ANGLE PROJECTION

ALL DIMENSIONS IN mm



ORDER CODE:
P25-XX23
PROBE HEAD
VARIANT (SEE BELOW)

PROBE HEAD VARIANTS



NOTES:
1. TO BE USED WITH SLEEVE S25-XX2.
2. SUITABLE FOR A MINIMUM DISTANCE BETWEEN CENTRES OF 2.54mm.

SPECIFICATIONS:

MATERIAL:

PLUNGER = HEAT TREATED BERYLLIUM COPPER
BARREL = PHOSPHOR BRONZE
SPRING = STAINLESS STEEL

FINISH:

PLUNGER AND BARREL = GOLD

ELECTRICAL:

CURRENT RATING = 3A
CONTACT RESISTANCE = 30 MILLIOHMS

MECHANICAL:

DURABILITY = 500,000 CYCLES
FULL TRAVEL = 4.20mm
SPRING FORCES:
AT FULL TRAVEL = 1.47N±0.29N (150G ±20%)
AT 2/3 TRAVEL = 1.13N ±0.23N (115g ±20%)

ENVIRONMENTAL:

TEMPERATURE RANGE = -40°C TO +85°C

SM	6	09.03.11	11173
NAME	ISS.	DATE	C/NOTE
APPROVED: S. MCCULLAGH			
CHECKED:		R. ADDE	
DRAWN:		W. J. BOURNE	
CUSTOMER REF.:			
ASSEMBLY DRG:			

HARWIN

HARWIN USA TEL: 603 893 5376 FAX: 603 893 5396 mis@harwin.com	HARWIN Europe (UK) TEL: 023 9231 4545 FAX: 023 9231 4590 mis@harwin.co.uk	HARWIN Asia TEL: +65 6 779 4909 FAX: +65 6 779 3868 mis@harwin.com.sg
--	--	--

THIS DRAWING AND ANY INFORMATION OR DESCRIPTIVE MATTER SET OUT HEREON ARE CONFIDENTIAL AND COPYRIGHT PROPERTY OF THE HARWIN GROUP AND MUST NOT BE DISCLOSED, LOANED, COPIED OR USED FOR MANUFACTURING, TENDERING OR FOR ANY OTHER PURPOSE WITHOUT THEIR WRITTEN PERMISSION.

TOLERANCES
X. = ±1mm
X.X = ±0.25mm
X.XX = ±0.10mm
X.XXX = ±0.01mm
ANGLES = ±5°
UNLESS STATED

MATERIAL:

SEE ABOVE

FINISH:

SEE ABOVE

S/AREA:

mm²

TITLE:

2.54mm MIN. CENTRE
TWO-PIECE SPRING PROBE

DRAWING NUMBER:

P25-XX23

SHT

2 OF 2