

Customer Information Sheet

DRAWING No. P1113XX3

SHEET 2 OF 2

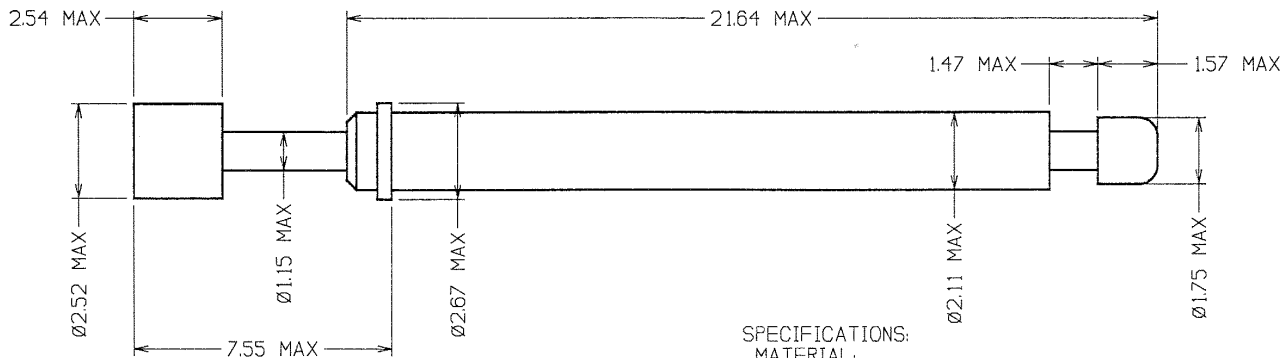
IF IN DOUBT - ASK

©

NOT TO SCALE

THIRD ANGLE PROJECTION

ALL DIMENSIONS IN mm



ORDER CODE:
P1113XX3
PROBE HEAD
VARIANT (SEE BELOW)

SPECIFICATIONS:

MATERIAL:

PLUNGER - P1113CA3, P1113CV3 = BRASS
P1113SS3 = HIGH CARBON STEEL

BARREL = BRASS
SPRING = SPRING STEEL

FINISH:

PLUNGER - P1113CA3, P1113CV3 = GOLD
P1113SS3 = NICKEL

BARREL = GOLD
SPRING = GOLD

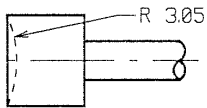
ELECTRICAL:

CURRENT RATING = 2A MAX
CONTACT RESISTANCE = 50 MILLIOHMS MAX

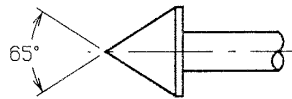
MECHANICAL:

FULL TRAVEL = 3.18mm
SPRING FORCE:
AT FULL TRAVEL = 0.75 ±0.25N
AT 2.20mm TRAVEL = 0.54 ±0.15N

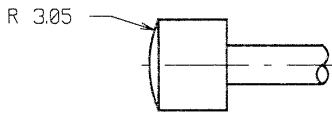
PROBE HEAD VARIANTS



CONCAVE RADIUS HEAD
P1113CA3



CONVEX HEAD
P1113SS3



CONVEX RADIUS HEAD
P1113CV3

NOTES:

1. RECOMMENDED HOLE SIZE = Ø2.00mm.
2. SUITABLE FOR A MINIMUM DISTANCE BETWEEN CENTRES OF 3.00mm.
3. THIS PART IS IDENTICAL TO P1113XX2 APART FROM POWER RATING THAT WAS 5A MAX AND MATERIAL/ FINISH OF SPRING AND PLUNGER VARIANT P1113SS3.

MCP	1	10.01.08	----
NAME	ISS.	DATE	C/NOTE
APPROVED: <i>M. W. [Signature]</i>			
CHECKED: <i>[Signature]</i>			
DRAWN: MARK G PLESTED			
CUSTOMER REF.:			
ASSEMBLY DRG.:			

HARWIN

HARWIN USA
TEL: 603 893 5376
FAX: 603 893 5396
mis@harwin.com

HARWIN Europe (UK)
TEL: 023 9231 4545
FAX: 023 9231 4590
mis@harwin.co.uk

HARWIN Asia
TEL: +65 6 779 4909
FAX: +65 6 779 3868
mis@harwin.com.sg

THIS DRAWING AND ANY INFORMATION OR DESCRIPTIVE MATTER SET OUT HEREON ARE CONFIDENTIAL AND COPYRIGHT PROPERTY OF THE HARWIN GROUP AND MUST NOT BE DISCLOSED, LOANED, COPIED OR USED FOR MANUFACTURING, TENDERING OR FOR ANY OTHER PURPOSE WITHOUT THEIR WRITTEN PERMISSION.

TOLERANCES
X. = ±1mm
X.X = ±0.25mm
X.XX = ±0.10mm
X.XXX = ±0.01mm
ANGLES = ±5°
UNLESS STATED

MATERIAL:
SEE ABOVE
FINISH:
SEE ABOVE
S/AREA: mm²

TITLE:
3.00mm MIN. CENTRE
ONE-PIECE SPRING PROBE
DRAWING NUMBER:
P1113XX3

SHT
2
OF
2