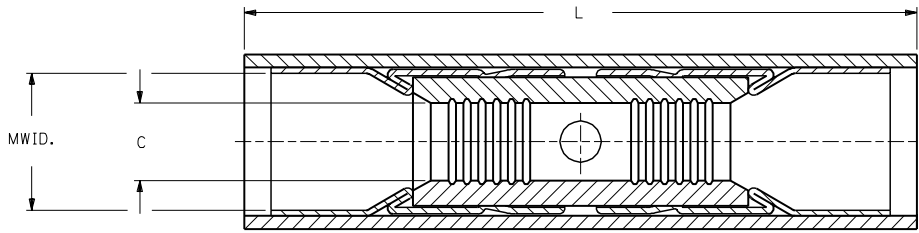


PART NO.	INSULATION COLOR	WIRE SIZE	MWID	"L" MAX.
A-845	RED	22-18	.140	1.26
B-831	BLUE	16-14	.170	1.26
C-846	YELLOW	12-10	.228	1.62

DRWG. NO. SD-19199-001



NOTES:
 1. MATERIAL;
 INSULATION: NYLON
 FERRULE: TIN PLATED BRASS
 CONNECTOR: TIN PLATED COPPER
 2. MWID=MAXIMUM WIRE INSULATION DIAMETER

CUSTOMER DRAWING

A	RELEASE NEW CUSTOMER DRAWING ET80539 12/18 HEB
LTR.	REVISIONS

DIMENSIONS SHOWN (METRIC) INCH	
UNLESS OTHERWISE SPECIFIED TOLERANCES: ANGULAR ± 1/2°	
	INCH METRIC
3 PLACE	± .005 ± 0.13
2 PLACE	± .01 ± 0.25
1 PLACE	± --- ± ---
DRAFT WHERE APPLICABLE MUST REMAIN WITHIN DIMENSIONS	
DRWG. BY HEB	CHK'D. BY RWD
APP'D. BY RWD	SCALE 5: 1

REVISE ONLY ON CAD SYSTEM			
TITLE AVIKRIMP BUTT CONNECTOR			
molex ETC INC. PINELLAS PARK, FLA. 33781 U.S.A.		SHEET NO. 1 OF 1	DATE 98/12/18
PART NO. SEE TABLE		DRWG. NO. SD-19199-001	
FILE NAME 19199001 SD	THIS DRAWING CONTAINS INFORMATION THAT IS PROPRIETARY TO MOLEX-ETC INC. AND SHOULD NOT BE USED WITHOUT WRITTEN PERMISSION.		DIV. SIZE ET A