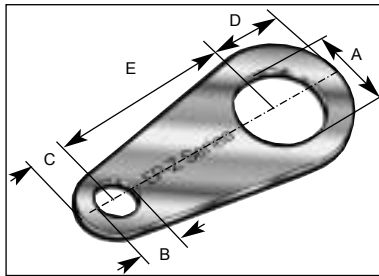


## Earth Tags

### Pear Shape



**EP-Z Series** Earth Tags are used to provide an earth-bond connection for an entry component.

**Available Sizes:** Metric, NPT, NPSM, ISO Pipe (BSP), PG, ET

**Materials:** Brass, 316 Stainless Steel, Aluminium,

**Plating:** Nickel, Zinc, other on application

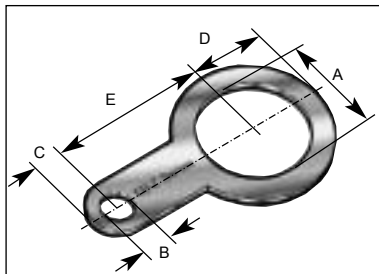
**CE Conformity:** Please refer to *European Directives & CE Marking*

**Part Number:** Please refer to *Part Numbering System*

### Dimensions of Metric and NPT Versions

Size	Thickness	B	C	D	E	Short Circuit Rating kA
M16	1.4	7.0	7.0	13.5	35.3	3.06
M20	1.4	7.0	7.0	13.5	35.3	3.06
M25	1.4	10.5	10.0	18.5	41.4	4.00
M32	1.4	12.0	13.0	23.3	53.9	5.40
M40	1.4	14.0	17.5	26.3	60.0	7.20
M50	1.4	14.0	17.5	32.1	76.1	10.40
M63	1.4	14.0	17.5	39.5	84.0	10.40
M75	1.4	14.0	17.5	44.0	94.5	10.40
M80	2.0	14.0	24.0	62.5	95.3	10.40
M85	2.0	14.0	24.0	62.5	95.3	10.40
M90	2.0	14.0	24.0	62.5	95.3	10.40
M100	2.0	14.0	24.0	62.5	103.5	10.40
½" NPT	1.4	7.0	7.0	15.0	34.9	3.06
¾" NPT	1.4	10.5	10.5	18.3	41.4	4.00
1" NPT	1.4	12.0	12.0	13.1	22.9	5.40
1¼" NPT	1.4	14.0	17.5	26.7	63.5	7.20
1½" NPT	1.4	14.0	17.5	32.1	76.1	10.40
2" NPT	1.4	14.0	17.5	39.6	84.0	10.40
2½" NPT	1.4	14.0	17.5	44.1	95.3	10.40
3" NPT	2.0	14.0	23.7	62.5	103.5	10.40

### Banjo Shape



**EB-Z Series** Earth Tags are used to provide an earth-bond connection for an entry component.

**Available Sizes:** Metric, NPT, NPSM, ISO Pipe (BSP), PG, ET

**Materials:** Brass, 316 Stainless Steel, Aluminium,

**Plating:** Nickel, Zinc, other on application

**CE Conformity:** Please refer to *European Directives & CE Marking*

**Part Number:** Please refer to *Part Numbering System*

### Dimensions of Metric and NPT Versions

Size	Thickness	B	C	D	E	Short Circuit Rating kA
M16	1.4	6.7	6.5	13.0	31.4	3.06
M20	1.4	6.7	6.5	14.3	33.3	3.06
M25	1.4	6.7	6.5	17.5	36.4	4.00
M32	1.4	12.0	11.2	22.3	41.1	5.40
M40	1.4	13.5	16.2	25.5	41.7	7.20
M50	1.4	13.5	20.8	32.5	58.1	10.40
M63	1.4	13.5	20.8	41.3	66.7	10.40
M75	1.4	13.5	20.8	47.6	73.1	10.40