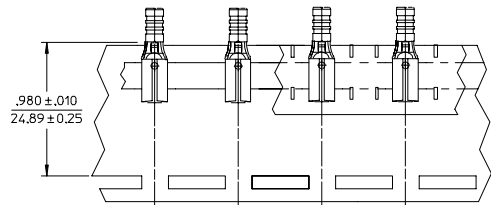
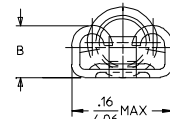
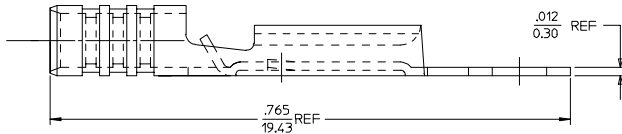
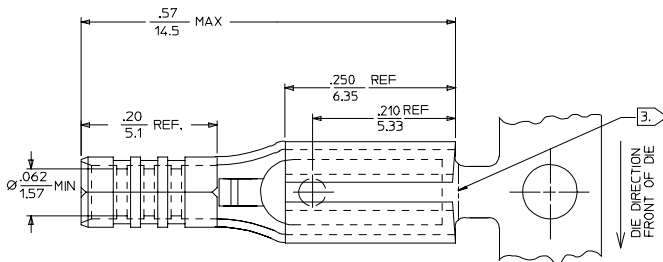


| MATERIAL NUMBER | ENGINEERING NUMBER | DESCRIPTION | DM B MAX |
|-----------------|--------------------|---|-----------|
| 190160001 | AA-1131 | .110 X .020 (2.80 X 0.51) FEMALE QD W/ DIMPLE LOOSE PIECE | .078/1.98 |
| 190160002 | AA-1131T | .110 X .020 (2.80 X 0.51) FEMALE QD W/ DIMPLE ON TAPE | |
| 190160210 | AAZ-1131MOD | .110 X .020 (2.80 X 0.51) FEMALE QD W/OUT DIMPLE ON STRIP | |
| 190160021 | AAZ-1134 | .110 X .032 (2.80 X 0.81) FEMALE QD W/ DIMPLE ON STRIP | .085/2.16 |
| 190160003 | AA-1134 | .110 X .032 (2.80 X 0.81) FEMALE QD W/ DIMPLE LOOSE PIECE | |
| 190160004 | AA-1134T | .110 X .032 (2.80 X 0.81) FEMALE QD W/ DIMPLE ON TAPE | |
| 190160226 | AAZ-1134MOD | .110 X .032 (2.80 X 0.81) FEMALE QD W/OUT DIMPLE ON STRIP | |



PARTS ON TAPE



SALES DRAWING

NOTES:

- MATERIAL: BRASS.
- PLATED TIN.
- LOOSE PIECE PARTS TO HAVE CUT-OFF TAB .005/.020 (0.13/0.51).
- PART IS ROHS COMPLIANT.

| | | | | | | |
|---|---|--|---|--|----------------------|------------------------|
| CHG DIM. B IN CHART EC NO. ETC2007-0334 DRAWN BY ZORNIERLE 2007/03/14 CHKD: JIMCONEIL 2007/03/14 APPR: JIMCONEIL 2007/03/15 | QUALITY SYMBOLS ▽=0 ▽=0 | GENERAL TOLERANCES (UNLESS SPECIFIED) | DIMENSION STYLE IN/MM | SCALE 10:1 | DESIGN UNITS INCH | THIRD ANGLE PROJECTION |
| | 4 PLACES ± --- ± --- 3 PLACES ± --- ± --- 2 PLACES ± --- ± --- 1 PLACE ± --- ± --- ANGULAR ± ---° | DRAWN BY BENDERLE CHECKED BY R DEROSS APPROVED BY R DEROSS | DATE 2004/07/15 DATE 2004/07/15 DATE 2004/07/15 | TITLE .110 (2.80) QD 22-18 AWG X.020 (0.51), 0.32(0.81) WITH & WITHOUT DIMPLE | MOLEX INCORPORATED | |
| DRAFT WHERE APPLICABLE MUST REMAIN WITHIN DIMENSIONS | | MATERIAL NO. SEE CHART | DOCUMENT NO. SD-19016-012 | SHEET NO. 1 OF 1 | | |