

NOTES:

① MAT'L: COPPER

PLATING: ELECTRO-TIN (.0003 MIN.)

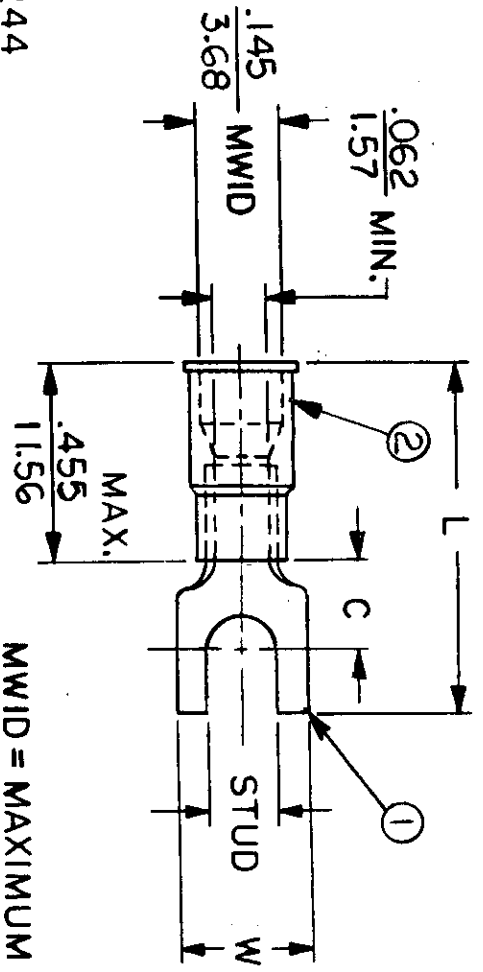
② INSULATION: MOLDED PVC (RED)

STUD SIZES: ($\pm .005$)

- 02 = .094
- 04 = .119
- 06 = .146
- 08 = .173
- 10 = .198
- 14 = .265
- 56 = .328
- 38 = .390

"UL" LISTING #E32244
 "CSA" LISTING #18689

ALL DIMENSIONS = $\frac{\text{INCHES}}{\text{MM}}$



MWID = MAXIMUM WIRE
 INSULATION DIAMETER
 WIRE SIZE: 22-18 AWG
 25-1.5 MM²

| PART NUMBER | "W" ±.010 | "C" MIN. | "L" MAX. | "ID" MIN | AVAILABLE STUD SIZES | STOCK THICKNESS | DIMENSIONAL TOLERANCES UNLESS OTHERWISE SPECIFIED | |
|-------------|----------------------|---------------------|----------------------|---------------------|----------------------|-----------------------------|---|------|
| | | | | | | | FRAC. | DEC. |
| A-234- | $\frac{.291}{7.39}$ | $\frac{.207}{5.26}$ | $\frac{.835}{21.21}$ | $\frac{.062}{1.57}$ | 04X, 06X, 08X | $\frac{.028 \pm .001}{.71}$ | ± | ± |
| A-238- | $\frac{.245}{6.22}$ | $\frac{.207}{5.26}$ | $\frac{.835}{21.21}$ | $\frac{.062}{1.57}$ | 04X, 06X | $\frac{.028 \pm .001}{.71}$ | ± | ± |
| A-291- | $\frac{.420}{10.67}$ | $\frac{.235}{5.97}$ | $\frac{.934}{23.72}$ | $\frac{.054}{1.37}$ | 06X, 08X, 10X | $\frac{.031 \pm .001}{.79}$ | ± | ± |
| A-294- | $\frac{.375}{9.53}$ | $\frac{.235}{5.97}$ | $\frac{.936}{23.77}$ | $\frac{.054}{1.37}$ | 06X, 08X, 10X | $\frac{.031 \pm .001}{.79}$ | ± | ± |
| A-297- | $\frac{.325}{8.26}$ | $\frac{.235}{5.97}$ | $\frac{.936}{23.77}$ | $\frac{.054}{1.37}$ | 04X, 06X, 08X | $\frac{.031 \pm .001}{.79}$ | ± | ± |

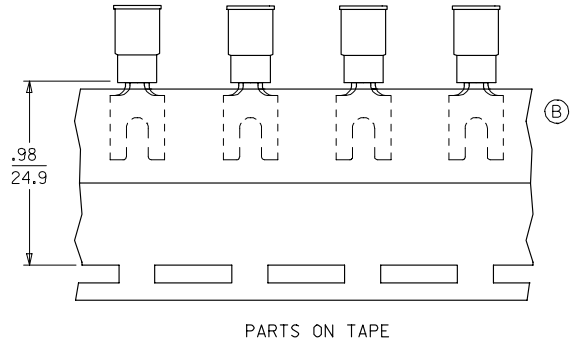
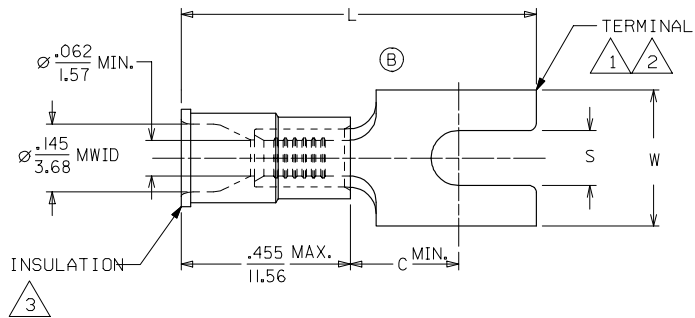


TITLE: SPADE TONGUE TERMINAL INSULKRIMP 200-SERIES

DWG. NO. A CUSTOMER DWG.

SCALE: NTS
 DRWN. BY: JJ
 CHKD. BY: GZ
 DATE: 10-29-84
 APPRD. BY:

| MATERIAL NUMBER | ENGINEERING NUMBER | STUD SIZE | "S" ±.005/(0.13) | "W" ±.010/(0.25) | "C" MIN. | "L" MAX. | PACKAGING |
|-----------------|--------------------|-----------|------------------|------------------|-------------|--------------|--------------|
| 191300008 | A-238-04X | 4 | .119/(3.02) | .245/(6.22) | .207/(5.26) | .835/(21.21) | LOOSE PIECE |
| 191300009 | A-238-06X | 6 | .146/(3.71) | .245/(6.22) | .207/(5.26) | .835/(21.21) | LOOSE PIECE |
| 191420058 | A-238-04XT | 4 | .119/(3.02) | .245/(6.22) | .207/(5.26) | .835/(21.21) | TAPE MOUNTED |
| 191420009 | A-238-06XT | 6 | .146/(3.71) | .245/(6.22) | .207/(5.26) | .835/(21.21) | TAPE MOUNTED |



- NOTES:
 1. MATERIAL: COPPER
 .029/.028(0.74/0.71)
 THICK.
 2. PLATING: ELECTRO-TIN.
 3. INSULATION: MOLDED PVC (RED).
 5. MWID=MAXIMUM WIRE INSULATION
 DIAMETER.

| | | | | | | | |
|--|-------------------------------|---|-------------------------------|--------------------------|---|------------------------------|------------------------|
| REVISED TO BLOCK SPADE EC NO: ETC2006-0125 DRAWN BY: DRWNEHLE 2005/12/02 CHECKED BY: CHYKROBESS 2005/12/06 APPROVED BY: APPR:ROBESS 2005/12/06 | QUALITY SYMBOLS ▽=0 ▽=0 | GENERAL TOLERANCES (UNLESS SPECIFIED) | | DIMENSION STYLE IN/MM | SCALE --- | DESIGN UNITS INCH | THIRD ANGLE PROJECTION |
| | | 4 PLACES ± --- ± --- 3 PLACES ± --- ± --- 2 PLACES ± --- ± --- 1 PLACE ± --- ± --- | DRAWN BY BRE 2001/08/15 | DATE 2001/08/15 | TITLE BLOCK SPADE TONGUE TERMINAL, INSULKRIMP, 22-18 AWG | | |
| | | ANGULAR ±1/2° | CHECKED BY RWD 2001/08/15 | DATE 2001/08/15 | MOLEX INCORPORATED | | |
| | | DRAFT WHERE APPLICABLE MUST REMAIN WITHIN DIMENSIONS | APPROVED BY RWD 2001/08/15 | DATE 2001/08/15 | MATERIAL NO. SEE CHART | DOCUMENT NO. SD-19142-002 | SHEET NO. 1 OF 1 |

SIZE B THIS DRAWING CONTAINS INFORMATION THAT IS PROPRIETARY TO MOLEX INCORPORATED AND SHOULD NOT BE USED WITHOUT WRITTEN PERMISSION