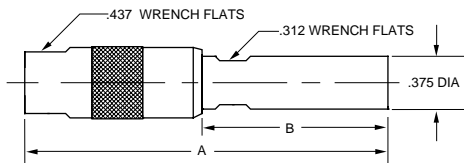


# STANDARD & MINI-WECO COAX PATCH PLUGS

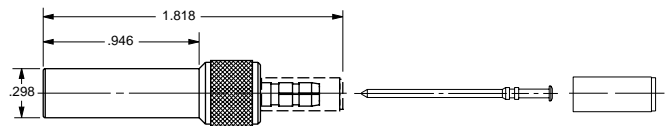


## PATCH PLUG

**SHIELD CRIMP** 50Ω RCA Center pin .070" A=2.73" B=1.50"  
75Ω WE Center pin .090" A=2.45" B=1.22"

**PL1C-△**  
**PL1WC-△**

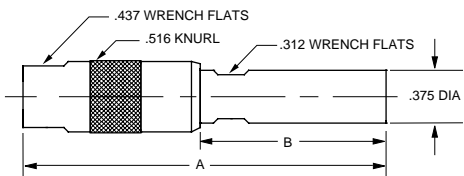
(WECO 358 type)



## PATCH PLUG

**STANDARD BNC STRIP DIMENSION**  
**CRIMP CONTACT, CRIMP SHIELD**  
(WECO 440 Type)

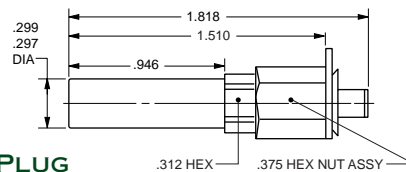
**PL11SC-△**



## PATCH PLUG

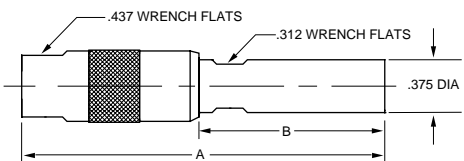
## CABLE ENTRY, FIELD SERVICEABLE

For RG58 **50Ω RCA Center pin .070"** A=2.80" B=1.568" ..... **PL1**  
For RG59 **50Ω RCA Center pin .070"** A=2.737" B=1.505" ..... **PL2**  
For RG58 **75Ω WE Center pin .090"** A=2.52" B=1.288" ..... **PL1W**  
For RG59 **75Ω WE Center pin .090"** A=2.457" B=1.225" ..... **PL2W**



**PATCH PLUG**  
**STANDARD CRIMP PLUG**  
**WITH LOCKING TAB**  
(WECO 440 Type)

**PL11SCLT-△**



## TERMINATION PLUG

### NO CHAIN

50Ω RCA Center pin .070"

A=2.81" B=1.58"

**TP-1-R**

### NO CHAIN

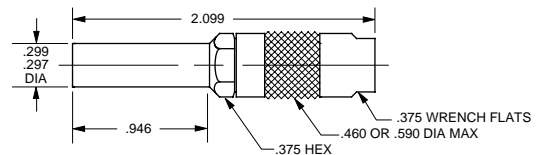
75Ω WE Center pin .090"

A=2.45" B=1.25"

**TPW-1-R**

For other chain options, see page 45.

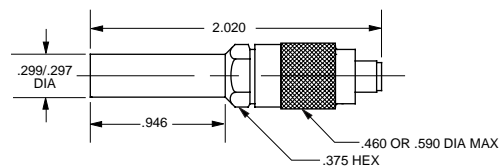
(WECO 340C type)



## PATCH PLUG

**SOLDER CONTACT, CRIMP SHIELD**  
(WECO 440 Type)

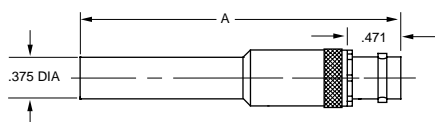
**PL11C-△**



## PATCH PLUG

**CRIMP CONTACT, CRIMP SHIELD**  
(WECO 440 Type)

**PL11AC-△**



## ADAPTERS

## PATCH PLUG TO BNC/TNC

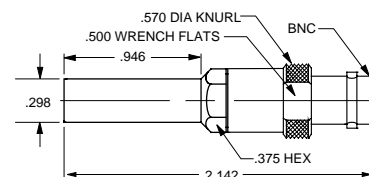
50Ω RCA plug Center pin .070" 50Ω BNC A =2.774" ..... **AD1**

50Ω RCA plug Center pin .070" 50Ω TNC A =2.774" ..... **ADH1**

75Ω WE Center pin .090" 75Ω BNC A =2.83" ..... **AD1W**

75Ω WE Center pin .090" 75Ω TNC A =2.83" ..... **ADH1W**

(WECO 358 type)



## ADAPTER

**75Ω MINATURE PATCH PLUG (MINI-WECO TYPE)**  
**TO 75Ω BNC**

**ADMW12**

△ - Refers to cable group table, see pages 91-133. R-Resistance