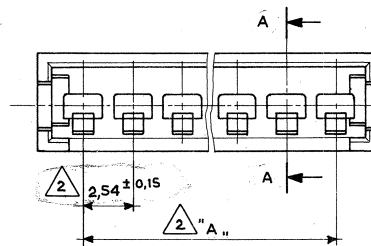
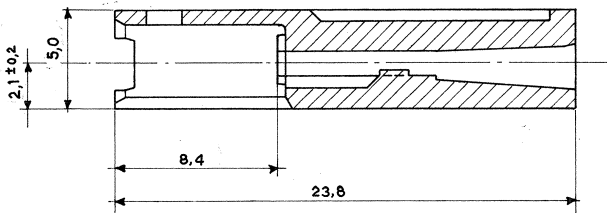


SCALA NON IMPEGNATIVA
(DO NOT SCALE)
DIMENSIONI IN
DIMENSIONS IN mm

METRIC

PROIEZIONE EUROPEA
(EUROPEAN PROJECTION)

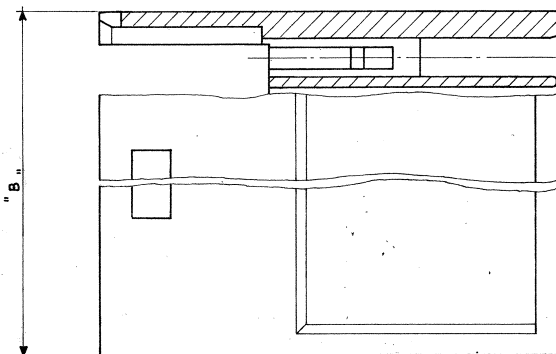
Sezione A-A
(Section)



Note: (Notes)

- 1 Noryl (UL 74-VI) Colore Nero (Black Colour).
- 2 Tolleranza non cumulativa. (Non-cumulative Tolerance).
- 3 PA 6.6 15% g.f. masterizzato ROSSO (PA 6.6 15% g.f. masterized - RED)

N° Pos.	Part. Number	Dim. "A"	Dim. "B"	Mat.
4	284072-1	7,62	12,5	3
2	284071-1	2,54	7,4	
22	280636	53,34	58,2	
15	280635	35,56	40,4	
12	280634	27,94	32,8	1
10	280633	22,86	27,7	
9	280632	20,32	25,1	
8	280631	17,78	22,6	
6	280630	12,70	17,5	
4	280629	7,62	12,5	
2	280628	2,54	7,4	



FINITURA / COLORE (FINISH / COLOUR)	MATERIALE (MATERIAL)	NUMERO (PART NUMBER)
CUSTOMER DWG. FOR REFERENCE ONLY		DISEGNO PER CLIENTE SOLO PER RIFERIMENTO
<small>THIS DRAWING IS UNPUBLISHED</small> <small>© COPYRIGHT 1986 BY AMP INCORPORATED, HARRISBURG, PA ALL INTERNATIONAL RIGHT RESERVED AMP PRODUCTS MAY BE COVERED BY U.S. AND FOREIGN PATENT AND/OR PATENT PENDING</small>		<small>RELEASE FOR PUBLICATION</small> <small>BY AMP INCORPORATED, HARRISBURG, PA ALL INTERNATIONAL RIGHT RESERVED AMP PRODUCTS MAY BE COVERED BY U.S. AND FOREIGN PATENT AND/OR PATENT PENDING</small>
<small>TOLLERANZE: SE NON DIVERSAMENTE SPECIFICATO (TOLERANCES UNLESS OTHERWISE SPECIFIED)</small> ± 0,3 <small>ANGOLI (ANGLES) ± 2°</small>	<small>DIAM. ISOLANTE (INS. DIA. RANGE)</small> <small>RANGO FILE (WIRE RANGE)</small> <small>SCALA (SCALE)</small> 5:1	AMP AMP ITALIA S.p.A. <small>CORSO F.lli GRIVI, 15 COLLEGO (TORINO)</small>
<small>DESCRIZIONE (DESCRIPTION)</small> AMP MODU II Pin Housing, Single Row, Crimp Snap-In.	<small>LOC. SIZE</small> IA3C- (Master Dwg.)	<small>NUMERO (DWG NO.)</small> 280628
<small>REV. (REV.)</small> 1 Revised and Redrawn	<small>DIS. (DR)</small> ES	<small>REV. (REV.)</small> H2

REV.	REVISIONI (REVISION RECORD)	DIS. (DR)	DATA (DATE)
1	Revised and Redrawn	ES	86
2	Revised note		
4			
H4			
H2			

DISTRIBUZIONE (PRINT DIST.)