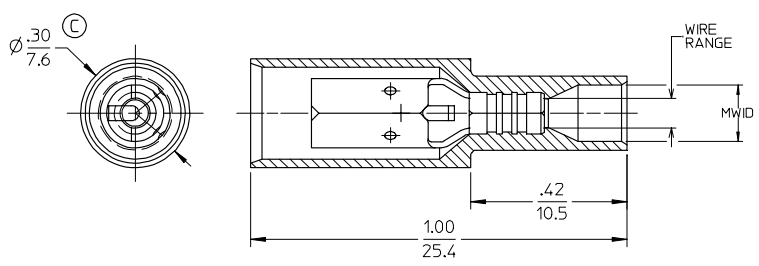


19038

MATERIAL NO. NYLON	ENGINEERING NO. NYLON	INSULATION NYLON COLOR	MATERIAL NO. PVC	ENGINEERING NO. PVC	INSULATION PVC COLOR	WIRE RANGE AWG / MM ²	MWID	FITS MALE PLUG DIA.
190380037	BRA-2156N	LIGHT RED	190380001	BRA-2156	RED	22-18 / 0.25-1.3	.128/(3.25)	.156/(3.96)
190380006	BRA-2180N	LIGHT RED	190380004	BRA-2180	RED	22-18 / 0.25-1.3	.128/(3.25)	.180/(4.57)
190380009	BRB-2156N	LIGHT BLUE	190380007	BRB-2156	DARK BLUE	16-14 / 1.0-2.6	.150/(3.81)	.156/(3.96)
190380013	BRB-2180N	LIGHT BLUE	190380011	BRB-2180	DARK BLUE	16-14 / 1.0-2.6	.150/(3.81)	.180/(4.57)



SALES DRAWING

- NOTE(S):
1. RECEPTACLE MATERIAL: .016/(0.41) THK BRASS
 2. RECEPTACLE FINISH: TIN PLATING
 3. MWID = MAXIMUM WIRE INSULATION DIAMETER
 4. ALL COMPONENTS ARE ROHS COMPLIANT.

REVISE DIM. EC NO: ETC2006-0450 DRAWN: CYRIL 2006/05/23 CHKD: MACNEIL 2006/05/24 APPR: RDEROSS 2006/05/24	QUALITY SYMBOLS	GENERAL TOLERANCES (UNLESS SPECIFIED)	SCALE 5:1	DESIGN UNITS INCH	THIRD ANGLE PROJECTION	REVISE ON CAD ONLY	
	DESCRIPTION ▽ - 0 ▽ - 0	4 PLACES ± --- ± ---	DIMENSION STYLE IN/MM DRAWN BY DATE DAY 97/07/07	TITLE FULLY INSULATED INSULK FEMALE BULLET RECEPTACLE			
		3 PLACES ± --- ± .005		MOLEX INCORPORATED			
		2 PLACES ± 0.13 ± .01	CHECKED BY DATE RWD 97/07/07	MATERIAL NO. DOCUMENT NO. SHEET NO. SEE CHART SD-19038-001 1 OF 1			
1 PLACE ± 0.25 ± ---	APPROVED BY DATE RWD 97/07/07	THIS DRAWING CONTAINS INFORMATION THAT IS PROPRIETARY TO MOLEX INCORPORATED AND SHOULD NOT BE USED WITHOUT WRITTEN PERMISSION					

tb_frame_B rev. B1 2000/08/01