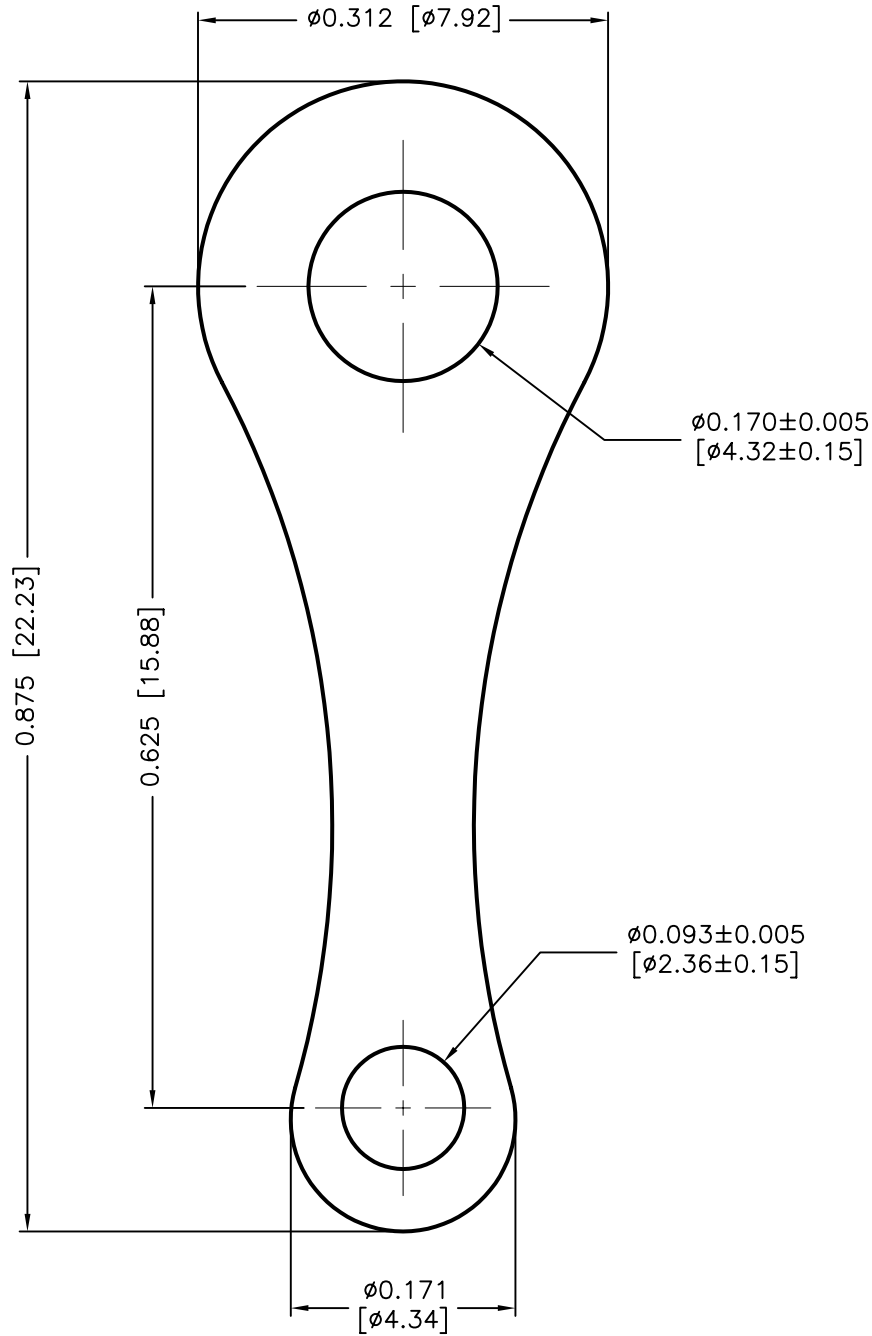


| DCP # | REV | DESCRIPTION | DRAWN | DATE | CHECKD | DATE | APPRVD | DATE |
|-------|-----|--------------------------|-------|---------|--------|---------|--------|---------|
| 1052 | A | RELEASED | HYO | 1/7/02 | JWM | 1/7/02 | DJC | 1/7/02 |
| 1892 | B | Update To RoHS Compliant | EO | 3/14/06 | HO | 3/15/06 | HO | 3/15/06 |



Material: 0.020 [0.50] Thick Brass, Tin Plated

SPC-F004.DWG

| | | | | | | |
|--|---------------|--------|---------------------|---------------|---------------------|-----|
| TOLERANCES: Unless Otherwise Specified Decimals ± 0.015 [± 0.25] | DRAWN BY: | DATE: | DRAWING TITLE: | | | |
| | HISHAM ODISH | 1/7/02 | SOLDER TERMINAL LUG | | | |
| | CHECKED BY: | DATE: | SIZE | DWG. NO. | ELECTRONIC FILE | REV |
| | JEFF MCVICKER | 1/7/02 | A | SPC11126 | 32C2103.DWG | B |
| | APPROVED BY: | DATE: | SCALE: NTS | | U.O.M.: INCHES [mm] | |
| DANIEL CAREY | 1/7/02 | | | SHEET: 1 OF 1 | | |

ALL RIGHTS RESERVED. NO PORTION OF THIS PUBLICATION, WHETHER IN WHOLE OR IN PART CAN BE REPRODUCED WITHOUT THE EXPRESS WRITTEN CONSENT OF SPC TECHNOLOGY. DISCLAIMER: ALL STATEMENTS AND TECHNICAL INFORMATION CONTAINED HEREIN ARE BASED UPON INFORMATION AND/OR TESTS WE BELIEVE TO BE ACCURATE AND RELIABLE. SINCE CONDITIONS OF USE ARE BEYOND OUR CONTROL, THE USER SHALL DETERMINE THE SUITABILITY OF THE PRODUCT FOR THE INTENDED USE AND ASSUME ALL RISK AND LIABILITY WHATSOEVER IN CONNECTION THEREWITH.