



1 - TERMINALS



RINGS

Non-Insulated .....	<a href="#">2</a>
Vinyl Insulated .....	<a href="#">8</a>
Nylon Insulated .....	<a href="#">11</a>
Flag Terminals .....	<a href="#">15</a>



SPADES

Non-Insulated .....	<a href="#">20</a>
Vinyl Insulated .....	<a href="#">21</a>
Nylon Insulated .....	<a href="#">24</a>



FLANGED SPADES

Non-Insulated .....	<a href="#">27</a>
Vinyl Insulated .....	<a href="#">28</a>
Nylon Insulated .....	<a href="#">31</a>



LOCKING SPADES

Non-Insulated .....	<a href="#">33</a>
Vinyl Insulated .....	<a href="#">34</a>
Nylon Insulated .....	<a href="#">36</a>



TUBULAR LUGS .....	<a href="#">37</a>
--------------------	--------------------

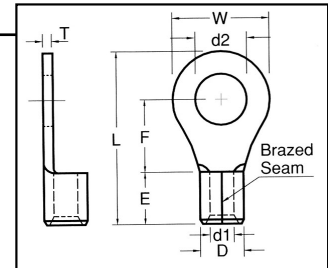


## Non-Insulated Ring Terminals

### 2622 AWG Non-Insulated Ring

**Material:** Tin Plated Copper with Brazed Seam  
**Maximum Electrical Current:** 9 Amps  
**Material Thickness (T):** .0196

**Barrel ID (d1) :** .039  
**Barrel OD (D):** .079  
**Barrel Length (E):** .157



HOFFMAN PART NO.	STUD SIZE	DIMENSIONS (INCHES)				UL	TAPE MOUNTED REEL QTY	DIE FOR TAPE MOUNTED	HAND TOOL
		STUD DIAMETER d2	TONGUE WIDTH W	STUD CLEARANCE F	LENGTH L				
2622-2	2	.087	.197	.236	.157	Y	NA	NA	YHT2622
2622-3	4	.126	.197	.236	.157	Y	NA	NA	YHT2622
2622-M3	6	.146	.236	.315	.157	Y	NA	NA	YHT2622
2622-4	8	.169	.256	.315	.157	Y	NA	NA	YHT2622

### 2216 AWG Non-Insulated Ring

**Material:** Tin Plated Copper with Brazed Seam  
**Maximum Electrical Current:** 18 Amps  
**Material Thickness (T):** .030

**Barrel ID (d1):** .067  
**Barrel OD (D):** .134  
**Barrel Length (E):** .189

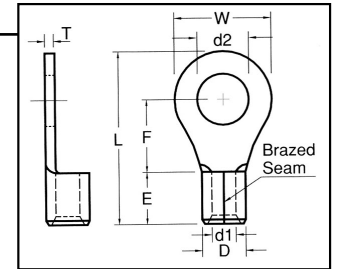
HOFFMAN PART NO.	STUD SIZE	DIMENSIONS (INCHES)				UL	TAPE MOUNTED REEL QTY	DIE FOR TAPE MOUNTED	HAND TOOL
		STUD DIAMETER d2	TONGUE WIDTH W	STUD CLEARANCE F	LENGTH L				
2216-S2/J	2	.087	.217	.157	.453	Y	1000	3H2216	YHT2210
2216-S3	4	.126	.217	.197	.492	Y	1000	3H2216	IZUMI 5N18
2216-S3/J	4	.126	.217	.157	.453	Y	1000	3H2216	YHT2210
2216-M3	6	.146	.260	.248	.567	Y	1000	3H2216	IZUMI 5N18
2216-M4	8	.169	.260	.248	.567	Y	1000	3H2216	IZUMI 5N18
2216-4	8	.169	.315	.276	.622	Y	1000	3H2216	IZUMI 5N18
2216-5	10	.209	.315	.276	.622	Y	1000	3H2216	IZUMI 5N18
2216-6	1/4	.252	.457	.433	.858	Y	1000	3H2216	IZUMI 5N18
2216-6/J	1/4	.252	.457	.437	.854	Y	1000	3H2216	YHT2210
2216-8	5/16	.331	.457	.433	.858	Y	1000	3H2216	IZUMI 5N18
2216-9	3/8	.413	.535	.547	1.004	Y	1000	3H2216	IZUMI 5N18
2216-13	1/2	.512	.756	.630	1.197	Y	1000	3H2216	IZUMI 5N18



**1614 AWG Non-Insulated Ring**

**Material:** Tin Plated Copper with Brazed Seam  
**Maximum Electrical Current:** 30 Amps  
**Material Thickness (T):** .031

**Barrel ID(d1):** .091  
**Barrel OD (D):** .161  
**Barrel Length (E):** .189



HOFFMAN PART NO.	STUD SIZE	DIMENSIONS (INCHES)				UL	TAPE MOUNTED REEL QTY	DIE FOR TAPE MOUNTED	HAND TOOL
		STUD DIAMETER d2	TONGUE WIDTH W	STUD CLEARANCE F	LENGTH L				
1614-3	4	.126	.260	.189	.504	Y	1000	3H1614	IZUMI 5N18
1614-S3	6	.146	.260	.189	.504	Y	1000	3H1614	IZUMI 5N18
1614-S3/J	6	.146	.252	.169	.484	Y	1000	3H1614	YHT2210
1614-M3	6	.146	.260	.248	.567	Y	1000	3H1614	IZUMI 5N18
1614-M4	8	.169	.260	.248	.567	Y	1000	3H1614	IZUMI 5N18
1614-4	8	.169	.335	.291	.650	Y	1000	3H1614	IZUMI 5N18
1614-M5	10	.209	.335	.291	.650	Y	1000	3H1614	IZUMI 5N18
1614-5	10	.209	.374	.291	.669	Y	1000	3H1614	IZUMI 5N18
1614-M5/J	10	.209	.335	.307	.661	Y	1000	3H1614	YHT2210
1614-6	1/4	.252	.472	.433	.858	Y	1000	3H1614	IZUMI 5N18
1614-8	5/16	.331	.472	.433	.858	Y	1000	3H1614	IZUMI 5N18
1614-9	3/8	.413	.535	.547	1.004	Y	1000	3H1614	IZUMI 5N18
1614-9/J	3/8	.413	.535	.547	1.004	Y	1000	3H1614	YHT2210
1614-13	1/2	.512	.756	.630	1.197	Y	1000	3H1614	IZUMI 5N18

**1210 AWG Non-Insulated Ring**

**Material:** Tin Plated Copper with Brazed Seam  
**Maximum Electrical Current:** 50 Amps  
**Material Thickness (T):** .039

**Barrel ID(d1):** .134  
**Barrel OD (D):** .220  
**Barrel Length (E):** .236  
**Barrel Length for J Type:** .268

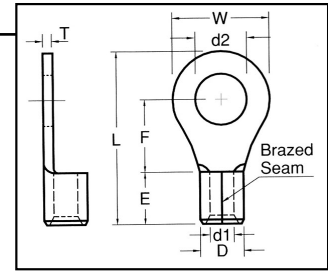
HOFFMAN PART NO.	STUD SIZE	DIMENSIONS (INCHES)				UL	MOUNTED REEL QTY	TAPE MOUNTED	DIE FOR HAND TOOL
		STUD DIAMETER d2	TONGUE WIDTH W	STUD CLEARANCE F	LENGTH L				
1210-S3/J	4	.126	.283	.232	.618	Y	1000	3H1210	YHT2210
1210-S3	6	.146	.283	.240	.618	Y	1000	3H1210	IZUMI 5N18
1210-S4	8	.169	.283	.240	.618	Y	1000	3H1210	IZUMI 5N18
1210S4/J	8	.169	.283	.232	.618	Y	1000	3H1210	YHT2210
1210-4	8	.169	.374	.327	.748	Y	1000	3H1210	IZUMI 5N18
1210-4/J	8	.169	.374	.327	.780	Y	1000	3H1210	YHT2210
1210-5	10	.209	.374	.327	.748	Y	1000	3H1210	IZUMI 5N18
1210-6	1/4	.252	.472	.413	.886	Y	1000	3H1210	IZUMI 5N18
1210-6/J	1/4	.252	.472	.512	1.016	Y	1000	3H1210	YHT2210
1210-S6/J	1/4	.252	.520	.354	.882	Y	1000	3H1210	YHT2210
1210-S8/J	5/16	.331	.520	.354	.882	Y	1000	3H1210	YHT2210
1210-8	5/16	.331	.591	.524	1.063	Y	1000	3H1210	IZUMI 5N18
1210-9	3/8	.413	.591	.524	1.063	Y	1000	3H1210	IZUMI 5N18
1210-9/J	3/8	.413	.591	.524	1.102	Y	1000	3H1210	YHT2210
1210-13	1/2	.512	.756	.630	1.244	Y	1000	3H1210	IZUMI 5N18
1210-14	9/16	.291	1.260	.992	1.858	Y	1000	3H1210	IZUMI 5N18



## 8 AWG Non-Insulated Ring

**Material:** Tin Plated Copper with Brazed Seam  
**Maximum Electrical Current:** 70 Amps  
**Material Thickness (T):** .047

**Barrel ID(d1):** .177  
**Barrel OD (D):** .283  
**Barrel Length (E):** .335



HOFFMAN PART NO.	STUD SIZE	DIMENSIONS (INCHES)				UL	TAPE MOUNTED REEL QTY	DIE FOR TAPE MOUNTED	HAND TOOL
		STUD DIAMETER d2	TONGUE WIDTH W	STUD CLEARANCE F	LENGTH L				
8NK4R1	8	.169	.315	.366	.846	Y	NA	NA	AK150
8S4R1	8	.169	.472	.366	.937	Y	200	3H8	
8NK5R1	8	.209	.346	.429	.937	Y	NA	NA	
8S5R1	10	.209	.472	.366	.937	Y	200	3H8	
8S6R1	1/4	.252	.472	.366	.917	Y	200	3H8	
8L6R1	1/4	.252	.591	.535	1.150	Y	200	3H8	
88R1	5/16	.331	.591	.535	1.150	Y	200	3H8	
89R1	3/8	.413	.591	.535	1.150	Y	200	3H8	
813R1	1/2	.512	.787	.591	1.319	Y	200	3H8	

## 6 AWG Non-Insulated Ring

**Material:** Tin Plated Copper with Brazed Seam  
**Maximum Electrical Current:** 95 Amps  
**Material Thickness (T):** .059

**Barrel ID(d1):** .228  
**Barrel OD (D):** .354  
**Barrel Length (E):** .413

HOFFMAN PART NO.	STUD SIZE	DIMENSIONS (INCHES)				UL	TAPE MOUNTED REEL QTY	DIE FOR TAPE MOUNTED	HAND TOOL
		STUD DIAMETER d2	TONGUE WIDTH W	STUD CLEARANCE F	LENGTH L				
65R1	10	.209	.472	.524	1.150	Y	200	3H6	AK150
66R1	1/4	.252	.472	.524	1.150	Y	200	3H6	
68R1	5/16	.331	.630	.559	1.280	Y	200	3H6	
69R1	3/8	.413	.630	.559	1.280	Y	200	3H6	
613R1	1/2	.512	.866	.780	1.614	Y	NA	3H6	

## 4 AWG Non-Insulated Ring

**Material:** Tin Plated Copper with Brazed Seam  
**Maximum Electrical Current:** 125 Amps  
**Material Thickness (T):** .067

**Barrel ID(d1):** .303  
**Barrel OD (D):** .453  
**Barrel Length (E):** .472

HOFFMAN PART NO.	STUD SIZE	DIMENSIONS (INCHES)				UL	TAPE MOUNTED REEL QTY	DIE FOR TAPE MOUNTED	HAND TOOL
		STUD DIAMETER d2	TONGUE WIDTH W	STUD CLEARANCE E	LENGTH L				
4S5R1	10	.209	.480	.594	1.307	Y	NA	NA	AK150
45R1	10	.209	.650	.531	1.319	Y	NA	NA	
4S6R1	1/4	.252	.480	.594	1.299	Y	NA	NA	
46R1	1/4	.252	.650	.531	1.319	Y	NA	NA	
48R1	5/16	.331	.650	.531	1.319	Y	NA	NA	
4S9R1	3/8	.413	.650	.531	1.319	Y	NA	NA	
413R1	1/2	.512	.866	.776	1.673	Y	NA	NA	



**2 AWG Non-Insulated Ring**

**Material:** Tin Plated Copper with Brazed Seam

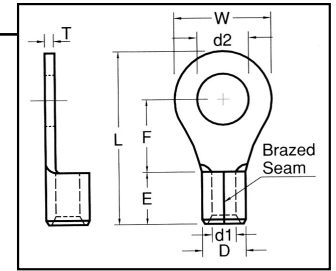
**Maximum Electrical Current:** 170 Amps

**Material Thickness (T):** .071

**Barrel ID(d1):** .370

**Barrel OD (D):** .524

**Barrel Length (E):** .551



HOFFMAN PART NO.	STUD SIZE	DIMENSIONS (INCHES)				UL	TAPE MOUNTED REEL QTY	DIE FOR TAPE MOUNTED	HAND TOOL
		STUD DIAMETER d2	TONGUE WIDTH W	STUD CLEARANCE F	LENGTH L				
2S5R1	10	.209	.602	.685	1.535	Y	NA	NA	AK150
2S6R1	1/4	.252	.602	.685	1.535	Y	NA	NA	
2S8R1	5/16	.331	.602	.685	1.535	Y	NA	NA	
2S9R1	3/8	.413	.602	.685	1.535	Y	NA	NA	
29R1	3/8	.413	.866	.697	1.681	Y	NA	NA	
211R1	7/16	.453	.866	.697	1.681	Y	NA	NA	
213R1	1/2	.512	.866	.697	1.681	Y	NA	NA	

**1/0 AWG Non-Insulated Ring**

**Material:** Tin Plated Copper with Brazed Seam

**Maximum Electrical Current:** 230 Amps

**Material Thickness (T):** .071

**Barrel ID(d1):** .449

**Barrel OD (D):** .606

**Barrel Length (E):** .709

HOFFMAN PART NO.	STUD SIZE	DIMENSIONS (INCHES)				UL	TAPE MOUNTED REEL QTY	DIE FOR TAPE MOUNTED	HAND TOOL
		STUD DIAMETER d2	TONGUE WIDTH W	STUD CLEARANCE F	LENGTH L				
1/06R1	1/4	.252	.866	.815	1.957	Y	NA	NA	AK150
1/08R1	5/16	.331	.866	.815	1.957	Y	NA	NA	
1/09R1	3/8	.413	.866	.815	1.957	Y	NA	NA	
1/011R1	7/16	.453	.866	.815	1.957	Y	NA	NA	
1/013R1	1/2	.512	.866	.815	1.957	Y	NA	NA	
1/016R1	5/8	.669	1.260	.925	2.264	Y	NA	NA	

**2/0 AWG Non-Insulated Ring**

**Material:** Tin Plated Copper with Brazed Seam

**Maximum Electrical Current:** 265 Amps

**Material Thickness:** .079

**Barrel ID(d1):** .524

**Barrel OD (D):** .689

**Barrel Length (E):** .709

HOFFMAN PART NO.	STUD SIZE	DIMENSIONS (INCHES)				UL	TAPE MOUNTED REEL QTY	DIE FOR TAPE MOUNTED	HAND TOOL
		STUD DIAMETER d2	TONGUE WIDTH W	STUD CLEARANCE F	LENGTH L				
2/06R1	1/4	.252	.945	.787	1.969	Y	NA	NA	AK150
2/08R1	5/16	.331	.945	.787	1.969	Y	NA	NA	
2/09R1	3/8	.413	.945	.787	1.969	Y	NA	NA	
2/011R1	7/16	.453	.945	.787	1.969	Y	NA	NA	
2/013R1	1/2	.512	.945	.787	1.969	Y	NA	NA	
2/016R1	5/8	.669	1.260	1.024	2.402	Y	NA	NA	



## 3/0 AWG Non-Insulated Ring

**Material:** Tin Plated Copper with Brazed Seam

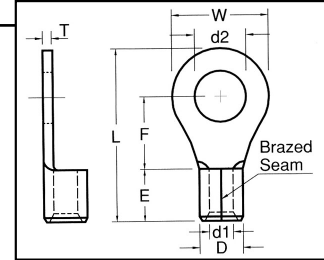
**Maximum Electrical Current:** 310 Amps

**Material Thickness (T):** .091

**Barrel ID(d1):** .571

**Barrel OD (D):** .768

**Barrel Length (E):** .787



HOFFMAN PART NO.	STUD SIZE	DIMENSIONS (INCHES)				UL	TAPE MOUNTED REEL QTY	DIE FOR TAPE MOUNTED	HAND TOOL
		STUD DIAMETER	TONGUE WIDTH	STUD CLEARANCE	LENGTH				
		d2	W	F	L				
3/06R1	1/4	.252	1.063	.815	2.134	Y	NA	NA	AK150
3/08R1	5/16	.331	1.063	.815	2.134	Y	NA	NA	
3/09R1	3/8	.413	1.063	.815	2.134	Y	NA	NA	
3/011R1	7/16	.453	1.063	.815	2.134	Y	NA	NA	
3/013R1	1/2	.512	1.063	.815	2.134	Y	NA	NA	
3/016R1	5/8	.669	1.260	1.260	2.677	Y	NA	NA	

## 4/0 AWG Non-Insulated Ring

**Material:** Tin Plated Copper with Brazed Seam

**Maximum Electrical Current:** 360 Amps

**Material Thickness (T):** .106

**Barrel ID(d1):** .646

**Barrel OD (D):** .870

**Barrel Length (E):** .827

HOFFMAN PART NO.	STUD SIZE	DIMENSIONS (INCHES)				UL	TAPE MOUNTED REEL QTY	DIE FOR TAPE MOUNTED	HAND TOOL
		STUD DIAMETER	TONGUE WIDTH	STUD CLEARANCE	LENGTH				
		d2	W	F	L				
4/06R1	1/4	.252	1.122	.801	2.189	Y	NA	NA	AK150
4/08R1	5/16	.331	1.122	.801	2.189	Y	NA	NA	
4/09R1	3/8	.413	1.122	.801	2.189	Y	NA	NA	
4/011R1	7/16	.453	1.122	.801	2.189	Y	NA	NA	
4/013R1	1/2	.512	1.122	.801	2.189	Y	NA	NA	
4/016R1	5/8	.669	1.260	1.260	2.717	Y	NA	NA	
4/019R1	3/4	.827	1.260	1.260	2.717	Y	NA	NA	

## 250/300 MCM Non-Insulated Ring

**Material:** Tin Plated Copper with Brazed Seam

**Maximum Electrical Current:** 445 Amps

**Material Thickness (T):** .126

**Barrel ID(d1):** .768

**Barrel OD (D):** 1.047

**Barrel Length (E):** 1.063

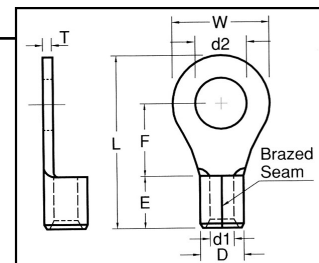
HOFFMAN PART NO.	STUD SIZE	DIMENSIONS (INCHES)				UL	TAPE MOUNTED REEL QTY	DIE FOR TAPE MOUNTED	HAND TOOL
		STUD DIAMETER	TONGUE WIDTH	STUD CLEARANCE	LENGTH				
		d2	W	F	L				
1508R1	5/16	.331	1.417	.906	2.599	Y	NA	NA	AK150
1509R1	3/8	.413	1.417	.906	2.599	Y	NA	NA	
15011R1	7/16	.453	1.417	.906	2.599	Y	NA	NA	
15013R1	1/2	.512	1.417	.906	2.599	Y	NA	NA	
15016R1	5/8	.669	1.417	.906	2.599	Y	NA	NA	



**300/350 MCM Non-Insulated Ring**

**Material:** Tin Plated Copper with Brazed Seam  
**Maximum Electrical Current:** 505 Amps  
**Material Thickness (T):** .138

**Barrel ID(d1):** .827  
**Barrel OD (D):** 1.126  
**Barrel Length (E):** 1.122



HOFFMAN PART NO.	STUD SIZE	DIMENSIONS (INCHES)				UL	TAPE MOUNTED REEL QTY	DIE FOR TAPE MOUNTED	*HYDRAULIC HEAD
		STUD DIAMETER	TONGUE WIDTH	STUD CLEARANCE	LENGTH				
		d2	W	F	L				
2009R1	3/8	.413	1.516	.965	2.717	Y	NA	NA	
20011R1	7/16	.453	1.516	.965	2.717	Y	NA	NA	603
20013R1	1/2	.512	1.516	.965	2.717	Y	NA	NA	
20016R1	5/8	.669	1.516	.965	2.717	Y	NA	NA	
20019R1	3/4	.827	1.516	1.535	3.409	Y	NA	NA	

**400/500 MCM Non-Insulated Ring**

**Material:** Tin Plated Copper with Brazed Seam  
**Maximum Electrical Current:** 620 Amps  
**Material Thickness (T):** .157

**Barrel ID(d1):** .945  
**Barrel OD (D):** 1.283  
**Barrel Length (E):** 1.240

HOFFMAN PART NO.	STUD SIZE	DIMENSIONS (INCHES)				UL	TAPE MOUNTED REEL QTY	DIE FOR TAPE MOUNTED	*HYDRAULIC HEAD
		STUD DIAMETER	TONGUE WIDTH	STUD CLEARANCE	LENGTH				
		d2	W	F	L				
2509R1	3/8	.413	1.732	.965	2.835	Y	NA	NA	
25011R1	7/16	.453	1.732	.965	2.835	Y	NA	NA	603
25013R1	1/2	.512	1.732	.965	2.835	Y	NA	NA	
25016R1	5/8	.669	1.732	.965	2.835	Y	NA	NA	

**500/600MCM Non-Insulated Ring**

**Material:** Tin Plated Copper with Brazed Seam  
**Maximum Electrical Current:** 690 Amps  
**Material Thickness (T):** .169

**Barrel ID:** 1.102  
**Barrel OD:** 1.480  
**Barrel Length:** 1.398

HOFFMAN PART NO.	STUD SIZE	DIMENSIONS (INCHES)				UL	TAPE MOUNTED REEL QTY	DIE FOR TAPE MOUNTED	*HYDRAULIC HEAD
		STUD DIAMETER	TONGUE WIDTH	STUD CLEARANCE	LENGTH				
		d2	W	F	L				
3009R1	3/8	.413	1.988	1.319	3.465	Y	NA	NA	
30011R1	7/16	.453	1.988	1.319	3.465	Y	NA	NA	603
30013R1	1/2	.512	1.988	1.319	3.465	Y	NA	NA	
30016R1	5/8	.669	1.988	1.319	3.465	Y	NA	NA	

\* Refer to Tool Selector Chart (page 92-93) for Tool Die Numbers.

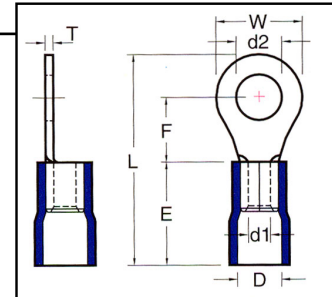


## Vinyl Insulated Ring Terminals

### 2216 AWG Vinyl Insulated Ring

**Material:** Tin Plated Copper with Brazed Seam  
**Insulation Material:** Red PVC Vinyl with Funnel Entry  
**Maximum Electrical Current:** 18 Amps  
**Maximum Electrical Rating:** 75°C, 600V  
**Material Thickness (T):** .030

**Barrel ID(d1):** .067  
**Barrel OD (D):** .157  
**Barrel Length (E):** .441



HOFFMAN PART NO.	STUD SIZE	DIMENSIONS (INCHES)				UL	TAPE MOUNTED REEL QTY	DIE FOR TAPE MOUNTED	HAND TOOL
		STUD DIAMETER d2	TONGUE WIDTH W	STUD CLEARANCE F	LENGTH L				
FVL2216-S2/J	2	.087	.217	.157	.689	Y	1000	3V2216	YNT2216
FVL2216-S3R2/J	4	.126	.217	.157	.689	Y	1000	3V2216	YNT2216
FVL2216-M3R2	6	.146	.260	.248	.811	Y	1000	3V2216	YNM2210
FVL2216-M4R2	8	.169	.260	.248	.811	Y	1000	3V2216	YNM2210
FVL2216-4R2	8	.169	.315	.276	.866	Y	1000	3V2216	YNM2210
FVL2216-5R2	10	.209	.315	.276	.866	Y	1000	3V2216	YNM2210
FVL2216-6R2	1/4	.252	.457	.433	1.102	Y	1000	3V2216	YNM2210
FVL2216-8R2	5/16	.331	.457	.433	1.102	Y	1000	3V2216	YNM2210
FVL2216-9R2	3/8	.413	.535	.547	1.248	Y	1000	3V2216	YNM2210
FVL2216-9R2/J	3/8	.413	.535	.547	1.240	Y	1000	3V2216	YNT2216

### 1614 AWG Vinyl Insulated Ring

**Material:** Tin Plated Copper with Brazed Seam  
**Insulation Material:** Blue PVC Vinyl with Funnel Entry  
**Maximum Electrical Current:** 30 Amps  
**Maximum Electrical Rating:** 75°C, 600V  
**Material Thickness (T):** .031

**Barrel ID:** .091  
**Barrel OD:** .177  
**Barrel Length:** .453

HOFFMAN PART NO.	STUD SIZE	DIMENSIONS (INCHES)				UL	TAPE MOUNTED REEL QTY	DIE FOR TAPE MOUNTED	HAND TOOL
		STUD DIAMETER d2	TONGUE WIDTH W	STUD CLEARANCE F	LENGTH L				
FVL1614-3R2	4	.126	.260	.189	.760	Y	1000	3V1614	YNM2210
FVL1614S3R2	6	.146	.260	.189	.760	Y	1000	3V1614	YNM2210
FVL1614-M3R2	6	.146	.260	.248	.823	Y	1000	3V1614	YNM2210
FVL1614-M4R2	8	.169	.260	.248	.823	Y	1000	3V1614	YNM2210
FVL1614-4R2	8	.169	.335	.307	.917	Y	1000	3V1614	YNM2210
FVL1614-M5R2	10	.209	.335	.307	.917	Y	1000	3V1614	YNM2210
FVL1614-5R2	10	.209	.374	.287	.917	Y	1000	3V1614	YNM2210
FVL1614-6R2	1/4	.252	.472	.433	1.114	Y	1000	3V1614	YNM2210
FVL1614-8R2	5/16	.331	.472	.433	1.114	Y	1000	3V1614	YNM2210
FVL1614-9R2	3/8	.413	.535	.547	1.260	Y	1000	3V1614	YNM2210
FVL1614-13R2	1/2	.512	.756	.630	1.453	Y	N/A	N/A	YNM2210

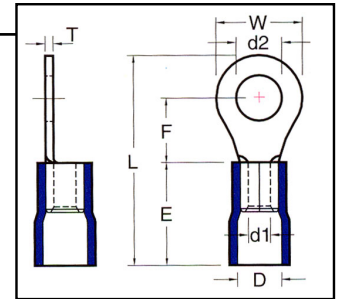




### 1210 AWG Vinyl Insulated Ring

**Material:** Tin Plated Copper with Brazed Seam  
**Insulation Material:** Yellow PVC Vinyl with Funnel Entry  
**Maximum Electrical Current:** 50 Amps  
**Maximum Electrical Rating:** 75°C, 600V  
**Material Thickness (T):** .039

**Barrel ID (d1):** .134  
**Barrel OD (D):** .248     **J Type:** .276  
**Barrel Length (E):** .555     **J Type:** .551



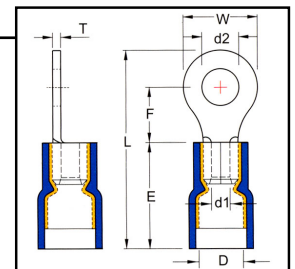
HOFFMAN PART NO.	STUD SIZE	DIMENSIONS (INCHES)				UL	TAPE MOUNTED REEL QTY	DIE FOR TAPE MOUNTED	HAND TOOL
		STUD DIAMETER d2	TONGUE WIDTH W	STUD CLEARANCE F	LENGTH L				
FVL1210-3R2/J	4	.126	.374	.327	1.063	Y	500	3V1210	YNT1210S
FVL1210-S3R2	6	.146	.283	.240	.937	Y	500	3V1210	YNM2210
FVL1210-S3/J	6	.146	.283	.232	.925	Y	500	3V1210	YNT1210S
FVL1210-S4R2	8	.169	.283	.240	.937	Y	500	3V1210	YNM2210
FVL1210-4/J	8	.169	.374	.327	1.063	Y	500	3V1210	YNT1210S
FVL1210-4R2	8	.169	.374	.358	1.091	Y	500	3V1210	YNM2210
FVL1210-5R2/J	10	.209	.374	.327	1.063	Y	500	3V1210	YNT1210S
FVL1210-5R2	10	.209	.374	.327	1.067	Y	500	3V1210	YNM2210
FVL1210-S6R2/J	1/4	.252	.520	.354	1.165	Y	500	3V1210	YNT1210S
FVL1210-6R2/J	1/4	.252	.472	.512	1.299	Y	500	3V1210	YNT1210S
FVL1210-6R2	1/4	.252	.472	.413	1.205	Y	500	3V1210	YNM2210
FVL1210-S8R2/J	5/16	.331	.520	.354	1.165	Y	500	3V1210	YNT1210S
FVL1210-8R2	5/16	.331	.591	.524	1.382	Y	500	3V1210	YNM2210
FVL1210-9R2	3/8	.413	.591	.524	1.382	Y	500	3V1210	YNM2210
FVL1210-9/J	3/8	.413	.591	.539	1.386	Y	500	3V1210	YNT1210S
FVL1210-13	1/2	.512	.756	.630	1.563	Y	NA	NA	YNM2210

## Vinyl Insulated Ring Terminals with Copper Support Sleeve

### 2216 AWG Vinyl Insulated Ring with Copper Support Sleeve

**Material:** Tin Plated Copper with Butted Seam  
**Insulation Material:** Red PVC Vinyl with Funnel Entry Copper Support Sleeve  
**Maximum Electrical Current:** 18 Amps  
**Maximum Electrical Rating:** 75°C, 600V  
**Material Thickness (T):** .030

**Barrel ID (d1):** .067  
**Barrel OD (D):** .065  
**Barrel Length (E):** .413



HOFFMAN PART NO.	STUD SIZE	DIMENSIONS (INCHES)				UL	TAPE MOUNTED REEL QTY	DIE FOR TAPE MOUNTED	HAND TOOL
		STUD DIAMETER d2	TONGUE WIDTH W	STUD CLEARANCE F	LENGTH L				
FVD2216-S3	4	.126	.217	.197	.709	Y	1000	3V2216	YNM2210D
FVD2216-M3	6	.146	.260	.248	.783	Y	1000	3V2216	YNM2210D
FVD2216-M4	8	.169	.260	.248	.783	Y	1000	3V2216	YNM2210D
FVD2216-4	8	.169	.315	.276	.839	Y	1000	3V2216	YNM2210D
FVD2216-5	10	.209	.315	.276	.839	Y	1000	3V2216	YNM2210D
FVD2216-6	1/4	.252	.457	.433	1.075	Y	1000	3V2216	YNM2210D
FVD2216-8	5/16	.331	.457	.433	1.075	Y	1000	3V2216	YNM2210D
FVD2216-9	3/8	.413	.535	.547	1.220	Y	1000	3V2216	YNM2210D



## 1614 AWG Vinyl Insulated Ring with Copper Support Sleeve

**Material:** Tin Plated Copper with Butted Seam

**Insulation Material:** Blue PVC Vinyl with Funnel Entry Copper Support Sleeve

**Maximum Electrical Current:** 30 Amps

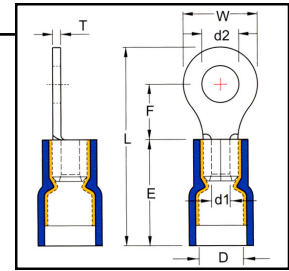
**Barrel ID (d1):** .091

**Maximum Electrical Rating:** 75°C, 600V

**Barrel OD (D):** .197

**Material Thickness (T):** .031

**Barrel Length (E):** .413



HOFFMAN PART NO.	STUD SIZE	DIMENSIONS (INCHES)				UL	TAPE MOUNTED REEL QTY	DIE FOR TAPE MOUNTED	HAND TOOL
		STUD DIAMETER	TONGUE WIDTH	STUD CLEARANCE	LENGTH				
		d2	W	F	L				
FVD1614-3	4	.126	.260	.165	.720	Y	1000	3V1614	YNM2210D
FVD1614-M3	6	.146	.260	.248	.783	Y	1000	3V1614	YNM2210D
FVD1614-M4	8	.169	.260	.248	.783	Y	1000	3V1614	YNM2210D
FVD1614-4	8	.169	.335	.307	.878	Y	1000	3V1614	YNM2210D
FVD1614-M5	10	.209	.335	.307	.878	Y	1000	3V1614	YNM2210D
FVD1614-5	10	.209	.374	.287	.878	Y	1000	3V1614	YNM2210D
FVD1614-6	1/4	.252	.472	.433	1.075	Y	1000	3V1614	YNM2210D
FVD1614-8	5/16	.331	.472	.433	1.075	Y	1000	3V1614	YNM2210D
FVD1614-9	3/8	.413	.535	.547	1.220	Y	1000	3V1614	YNM2210D
FVD1614-13	1/2	.512	.756	.630	1.413	Y	1000	3V1614	YNM2210D

## 1210 AWG Vinyl Insulated Ring with Copper Support Sleeve

**Material:** Tin Plated Copper with Butted Seam

**Insulation Material:** Yellow PVC Vinyl with Funnel Entry Copper Support Sleeve

**Maximum Electrical Current:** 50 Amps

**Barrel ID (d1):** .134

**Maximum Electrical Rating:** 75°C, 600V

**Barrel OD (D):** .268

**Material Thickness (T):** .039

**Barrel Length (E):** .531 J Type: .551

HOFFMAN PART NO.	STUD SIZE	DIMENSIONS (INCHES)				UL	TAPE MOUNTED REEL QTY	DIE FOR TAPE MOUNTED	HAND TOOL
		STUD DIAMETER	TONGUE WIDTH	STUD CLEARANCE	LENGTH				
		d2	W	F	L				
FVD1210-S3	6	.146	.283	.240	.913	Y	500	3V1210	YNM2210D
FVD1210-3/J	4	.126	.374	.327	1.063	Y	500	3V1210	YNT1210S
FVD1210-4/J	8	.169	.374	.327	1.063	Y	500	3V1210	YNT1210S
FVD1210-S4	8	.169	.283	.240	.913	Y	500	3V1210	YNM2210D
FVD1210-4	8	.169	.374	.358	1.067	Y	500	3V1210	YNM2210D
FVD1210-5	10	.209	.374	.358	1.067	Y	500	3V1210	YNM2210D
FVD1210-6/J	1/4	.252	.472	.512	1.229	Y	500	3V1210	YNT1210S
FVD1210-S6/J	1/4	.252	.520	.354	1.165	Y	500	3V1210	YNT1210S
FVD1210-6	1/4	.252	.472	.413	1.181	Y	500	3V1210	YNM2210D
FVD1210-8	5/16	.331	.591	.531	1.358	Y	500	3V1210	YNM2210D
FVD1210-9	3/8	.413	.591	.531	1.358	Y	500	3V1210	YNM2210D
FVD1210-13	1/2	.512	.756	.630	1.539	Y	NA	NA	YNM2210D



## Nylon Insulated Ring Terminals with Support Sleeve

### 2622 AWG Nylon Insulated Ring with Copper Support Sleeve

**Material:** Tin Plated Copper with Butted Seam

**Insulation Material:** Yellow 6/6 Nylon with Funnel Entry Copper Support Sleeve

**Maximum Electrical Current:** 9 Amps

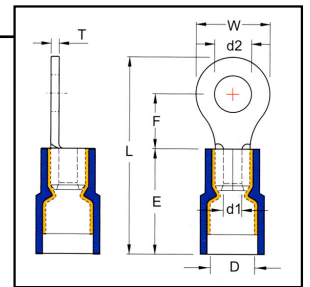
**Barrel ID (d1):** .039

**Maximum Electrical Rating:** 75°C, 600V

**Barrel OD (D):** .098

**Material Thickness (T):** .0197

**Barrel Length (E):** .327



HOFFMAN PART NO.	STUD SIZE	DIMENSIONS (INCHES)				UL	TAPE MOUNTED REEL QTY	DIE FOR TAPE MOUNTED	HAND TOOL
		STUD DIAMETER d2	TONGUE WIDTH W	STUD CLEARANCE F	LENGTH L				
FND2622-2/J	2	.126	.205	.228	.657	Y	NA	NA	YNT2622
FND2622-3.7/J	4	.126	.205	.228	.657	Y	NA	NA	YNT2622
FND2622-M3/J	6	.146	.205	.228	.657	Y	NA	NA	YNT2622
FND2622-4/J	8	.169	.260	.303	.760	Y	NA	NA	YNT2622

### 2216 AWG Nylon Insulated Ring with Copper Support Sleeve

**Material:** Tin Plated Copper with Butted Seam

**Insulation Material:** Red 6/6 Nylon with Funnel Entry Copper Support Sleeve

**Maximum Electrical Current:** 18 Amps

**Barrel ID (d1):** .067

**Maximum Electrical Rating:** 105°C, 600V

**Barrel OD (D):** .177

**Material Thickness (T):** .030

**Barrel Length (E):** .433

HOFFMAN PART NO.	STUD SIZE	DIMENSIONS (INCHES)				UL	TAPE MOUNTED REEL QTY	DIE FOR TAPE MOUNTED	HAND TOOL
		STUD DIAMETER d2	TONGUE WIDTH W	STUD CLEARANCE F	LENGTH L				
FND2216-S3	4	.126	.217	.197	.728	Y	1000	3V2216	YNM2210D
FND2216-M3	6	.146	.260	.248	.803	Y	1000	3V2216	YNM2210D
FND2216M4	8	.169	.260	.248	.803	Y	1000	3V2216	YNM2210D
FND2216-4	8	.169	.315	.276	.858	Y	1000	3V2216	YNM2210D
FND2216-5	10	.209	.315	.276	.858	Y	1000	3V2216	YNM2210D
FND2216-6	1/4	.252	.457	.433	1.094	Y	1000	3V2216	YNM2210D
FND2216-8	5/16	.331	.457	.433	1.094	Y	1000	3V2216	YNM2210D
FND2216-9	3/8	.413	.535	.547	1.240	Y	1000	3V2216	YNM2210D



## 1614 AWG Nylon Insulated Ring with Copper Support Sleeve

**Material:** Tin Plated Copper with Butted Seam

**Insulation Material:** Blue 6/6 Nylon with Funnel Entry Copper Support Sleeve

**Maximum Electrical Current:** 30 Amps

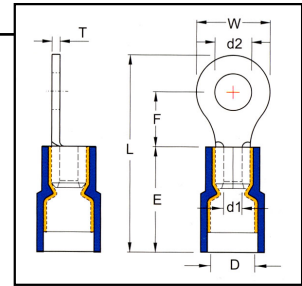
**Barrel ID (d1):** .091

**Maximum Electrical Rating:** 105°C, 600V

**Barrel OD (D):** .205

**Material Thickness (T):** .031

**Barrel Length (E):** .433



HOFFMAN PART NO.	STUD SIZE	DIMENSIONS (INCHES)				UL	TAPE MOUNTED REEL QTY	DIE FOR TAPE MOUNTED	HAND TOOL
		STUD DIAMETER d2	TONGUE WIDTH W	STUD CLEARANCE F	LENGTH L				
FND1614-3	4	.126	.260	.189	.740	Y	1000	3V1614	YNM2210D
FND1614-M3	6	.146	.260	.248	.803	Y	1000	3V1614	YNM2210D
FND1614-M4	8	.169	.260	.248	.803	Y	1000	3V1614	YNM2210D
FND1614-4	8	.169	.335	.307	.898	Y	1000	3V1614	YNM2210D
FND1614-M5	10	.209	.335	.307	.898	Y	1000	3V1614	YNM2210D
FND1614-5	10	.209	.374	.287	.898	Y	1000	3V1614	YNM2210D
FND1614-6	1/4	.252	.472	.433	1.094	Y	1000	3V1614	YNM2210D
FND1614-8	5/16	.331	.472	.433	1.094	Y	1000	3V1614	YNM2210D
FND1614-9	3/8	.413	.535	.547	1.240	Y	1000	3V1614	YNM2210D
FND1614-13	1/2	.512	.756	.630	1.433	Y	1000	3V1614	YNM2210D

## 1210 AWG Nylon Insulated Ring with Copper Support Sleeve

**Material:** Tin Plated Copper with Butted Seam

**Insulation Material:** Yellow 6/6 Nylon with Funnel Entry Copper Support Sleeve

**Maximum Electrical Current:** 50 Amps

**Barrel ID(d1):** .134

**Maximum Electrical Rating:** 105°C, 600 V

**Barrel OD (D):** .276

**Material Thickness (T):** .039

**Barrel Length (E):** .512

HOFFMAN PART NO.	STUD SIZE	DIMENSIONS (INCHES)				UL	TAPE MOUNTED REEL QTY	DIE FOR TAPE MOUNTED	HAND TOOL
		STUD DIAMETER d2	TONGUE WIDTH W	STUD CLEARANCE F	LENGTH L				
FND1210-S3	6	.146	.283	.240	.894	Y	1000	3V1210	YNM2210D
FND1210-S4	8	.169	.283	.240	.894	Y	1000	3V1210	YNM2210D
FND1210-4	8	.169	.374	.327	1.024	Y	1000	3V1210	YNM2210D
FND1210-5	10	.209	.374	.327	1.024	Y	1000	3V1210	YNM2210D
FND1210-S6	1/4	.252	.520	.354	1.146	Y	1000	3V1210	YNM2210D
FND1210-6	1/4	.252	.472	.413	1.161	Y	1000	3V1210	YNM2210D
FND1210-8	5/16	.331	.591	.531	1.339	Y	1000	3V1210	YNM2210D
FND1210-9	3/8	.413	.591	.531	1.339	Y	500	3V1210	YNM2210D
FND1210-13	1/2	.512	.756	.630	1.520	Y	NA	NA	YNM2210D



# Nylon Insulated Ring Terminals

## 8 AWG Nylon Insulated Ring

**Material:** Tin Plated Copper with Butted Seam

**Insulation Material:** Red 6/6 Nylon

**Maximum Electrical Current:** 70 Amps

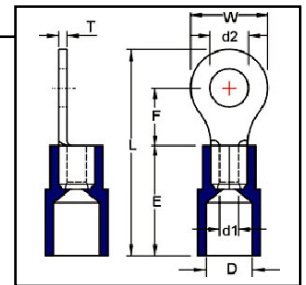
**Maximum Electrical Rating:** 105°C, 600V

**Material Thickness (T):** .047

**Barrel ID(d1):** .177

**Barrel OD (D):** .315

**Barrel Length (E):** .630



HOFFMAN PART NO.	STUD SIZE	DIMENSIONS (INCHES)				UL	TAPE MOUNTED REEL QTY	DIE FOR TAPE MOUNTED	HAND TOOL
		STUD DIAMETER	TONGUE WIDTH	STUD CLEARANCE	LENGTH				
		d2	W	F	L				
FN8S4	8	.169	.315	.366	1.142	Y	250	3H6	111
FN8S5	10	.209	.472	.366	1.232	Y	250	3H6	111
FN8S6	1/4	.252	.472	.366	1.232	Y	250	3H6	111
FN8-6	1/4	.252	.591	.543	1.469	Y	250	3H6	111
FN8-8	5/16	.331	.591	.543	1.469	Y	250	3H6	111
FN8-9	3/8	.413	.591	.543	1.469	Y	NA	NA	111
FN8-13	1/2	.512	.787	.591	1.614	Y	NA	NA	111

## 6 AWG Nylon Insulated Ring

**Material:** Tin Plated Copper with Butted Seam

**Insulation Material:** Blue 6/6 Nylon

**Maximum Electrical Current:** 95 Amps

**Maximum Electrical Rating:** 105°C, 600V

**Material Thickness (T):** .059

**Barrel ID(d1):** .228

**Barrel OD (D):** .433

**Barrel Length (E):** .846

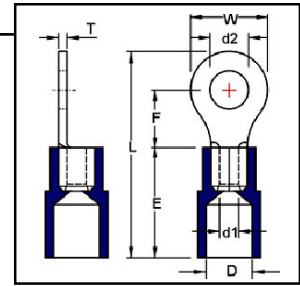
HOFFMAN PART NO.	STUD SIZE	DIMENSIONS (INCHES)				UL	TAPE MOUNTED REEL QTY	DIE FOR TAPE MOUNTED	HAND TOOL
		STUD DIAMETER	TONGUE WIDTH	STUD CLEARANCE	LENGTH				
		d2	W	F	L				
FN65	10	.209	.472	.524	1.606	Y	NA	NA	111
FN66	1/4	.252	.472	.524	1.606	Y	NA	NA	111
FN68	5/16	.331	.630	.559	1.713	Y	NA	NA	111
FN69	3/8	.413	.630	.559	1.713	Y	NA	NA	111
FN6-13	1/2	.512	.866	.780	2.047	Y	NA	NA	111



## 4 AWG Nylon Insulated Ring

**Material:** Tin Plated Copper with Butted Seam  
**Insulation Material:** Yellow 6/6 Nylon  
**Maximum Electrical Current:** 125 Amps  
**Maximum Electrical Rating:** 105°C, 600V  
**Material Thickness (T):** .067

**Barrel ID(d1):** .303  
**Barrel OD (D):** .512  
**Barrel Length (E):** .945



HOFFMAN PART NO.	STUD SIZE	DIMENSIONS (INCHES)				UL	TAPE MOUNTED REEL QTY	DIE FOR TAPE MOUNTED	HAND TOOL
		STUD DIAMETER	TONGUE WIDTH	STUD CLEARANCE	LENGTH				
		d2	W	F	L				
FN4S5	10	.209	.480	.594	1.780	Y	NA	NA	111
FN46	1/4	.252	.650	.531	1.791	Y	NA	NA	111
FN48	5/16	.331	.650	.531	1.791	Y	NA	NA	111
FN49	3/8	.413	.650	.531	1.791	Y	NA	NA	111
FN413	1/2	.453	.866	.776	2.146	Y	NA	NA	111

## 2 AWG Nylon Insulated Ring

**Material:** Tin Plated Copper with Butted Seam  
**Insulation Material:** Red 6/6 Nylon  
**Maximum Electrical Current:** 170 Amps  
**Maximum Electrical Rating:** 105°C, 600V  
**Material Thickness (T):** .071

**Barrel ID(d1):** .370  
**Barrel OD (D):** .571  
**Barrel Length (E):** 1.063

HOFFMAN PART NO.	STUD SIZE	DIMENSIONS (INCHES)				UL	TAPE MOUNTED REEL QTY	DIE FOR TAPE MOUNTED	HAND TOOL
		STUD DIAMETER	TONGUE WIDTH	STUD CLEARANCE	LENGTH				
		d2	W	F	L				
FN2S5	10	.209	.602	.685	2.047	Y	NA	NA	111
FN2S6	1/4	.252	.602	.685	2.047	Y	NA	NA	111
FN2S8	5/16	.331	.602	.685	2.047	Y	NA	NA	111
FN2S9	3/8	.413	.602	.685	2.047	Y	NA	NA	111
FN29	3/8	.413	.866	.697	2.193	Y	NA	NA	111
FN213	1/2	.512	.866	.697	2.193	Y	NA	NA	111



## Non-Insulated Flag Ring Terminals

### 2216 AWG Non-Insulated Flag Ring

**Material:** Tin Plated Copper with Brazed Seam

**Insulation Material:** None

**Maximum Electrical Current:** 18 Amps

**Maximum Temperature Rating:** 176°C

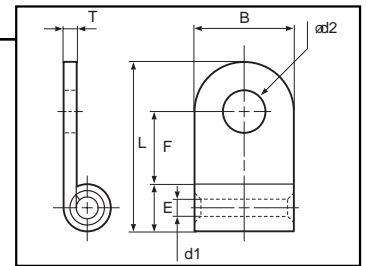
**Material Thickness (T):** .031

**Barrel ID (d1):** .067

**J Type:** .067

**Barrel OD (E):** .139

**J Type:** .134



HOFFMAN PART NO.	STUD SIZE	DIMENSIONS (INCHES)				UL	HAND TOOL
		STUD DIAMETER	TONGUE WIDTH	STUD CLEARANCE	LENGTH		
		d2	W	F	L		
FG2216-4	8	0.169	0.378	0.291	0.610	Y	YG2216
FG2216-5	10	0.209	0.378	0.315	0.642	Y	YG2216

### 1614 AWG Non-Insulated Flag Ring

**Material:** Tin Plated Copper with Brazed Seam

**Insulation Material:** None

**Maximum Electrical Current:** 30 Amps

**Maximum Temperature Rating:** 176°C

**Material Thickness (T):** .031

**Barrel ID:** .091

**J Type:** .091

**Barrel OD:** .161

**J Type:** .161

HOFFMAN PART NO.	STUD SIZE	DIMENSIONS (INCHES)				UL	HAND TOOL
		STUD DIAMETER	TONGUE WIDTH	STUD CLEARANCE	LENGTH		
		d2	W	F	L		
FG1614-4/J	8	0.169	0.378	0.291	0.638	Y	YG2216
FG1614-5	10	0.209	0.378	0.287	0.642	Y	YG2216
FG1614-5/J	10	0.209	0.378	0.291	0.638	Y	YG2216
FG1614-6	1/4	0.252	0.378	0.287	0.642	Y	YG2216
FG1614-6/J	1/4	0.252	0.378	0.291	0.638	Y	YG2216

### 1210 AWG Non-Insulated Flag Ring

**Material:** Tin Plated Copper with Brazed Seam

**Insulation Material:** None

**Maximum Electrical Current:** 50 Amps

**Maximum Temperature Rating:** 176°C

**Material Thickness (T):** .039

**Barrel ID:** .139

**J Type:** .134

**Barrel OD:** .220

**J Type:** .220

HOFFMAN PART NO.	STUD SIZE	DIMENSIONS				UL	HAND TOOL
		STUD DIAMETER	TONGUE WIDTH	STUD CLEARANCE	LENGTH		
		d2	W	F	L		
FG1210-4/J	8	0.169	0.378	0.291	0.701	Y	YG1210
FG1210-5	10	0.209	0.378	0.291	0.701	Y	YG1210
FG1210-5/J	10	0.209	0.378	0.291	0.701	Y	YG1210
FG1210-6	1/4	0.252	0.378	0.291	0.701	Y	YG1210
FG1210-6/J	1/4	0.252	0.378	0.291	0.701	Y	YG1210



## 8 AWG Non-Insulated Flag Ring

**Material:** Tin Plated Copper with Brazed Seam

**Insulation Material:** None

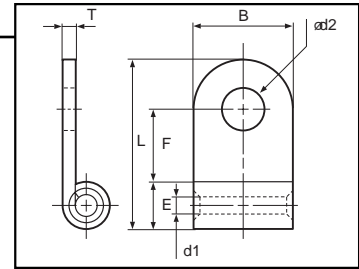
**Maximum Electrical Current:** 70 Amps

**Maximum Temperature Rating:** 176°C

**Material Thickness (T):** .047

**Barrel ID (d1):** .177    **J Type:** .177

**Barrel OD (E):** .283    **J Type:** .280



HOFFMAN PART NO.	STUD SIZE	DIMENSIONS (INCHES)				UL	HAND TOOL
		STUD DIAMETER d2	TONGUE WIDTH W	STUD CLEARANCE F	LENGTH L		
FG85	10	0.209	0.500	0.358	0.906	Y	YG8S
FG85/J	10	0.209	0.496	0.374	0.906	Y	YG8S
FG86	1/4	0.252	0.500	0.358	0.906	Y	YG8S
FG86/J	1/4	0.252	0.496	0.374	0.906	Y	YG8S
FG88	5/16	0.331	0.610	0.543	1.13	Y	YG8S
FG88/J	5/16	0.331	0.610	0.535	1.122	Y	YG8S
FG89	3/8	0.413	0.610	0.543	1.114	Y	YG8S
FG89/J	3/8	0.413	0.610	0.535	1.122	Y	YG8S

## 6 AWG Non-Insulated Flag Ring

**Material:** Tin Plated Copper with Brazed Seam

**Insulation Material:** None

**Maximum Electrical Current:** 95 Amps

**Maximum Temperature Rating:** 176°C

**Material Thickness (T):** .059

**Barrel ID (d1):** .228    **J Type:** .228

**Barrel OD (E):** .354    **J Type:** .354

HOFFMAN PART NO.	STUD SIZE	DIMENSIONS (INCHES)				UL	HAND TOOL
		STUD DIAMETER d2	TONGUE WIDTH W	STUD CLEARANCE F	LENGTH L		
FG65/J	10	0.209	0.496	0.382	0.984	Y	YG14S
FG66	1/4	0.252	0.500	0.378	0.980	Y	YG14S
FG66/J	1/4	0.252	0.496	0.382	0.984	Y	YG14S
FG68	5/16	0.331	0.630	0.531	1.201	Y	YG14S
FG69	3/8	0.413	0.622	0.531	1.201	Y	YG14S





**4 AWG Non-Insulated Flag Ring**

**Material:** Tin Plated Copper with Brazed Seam

**Insulation Material:** None

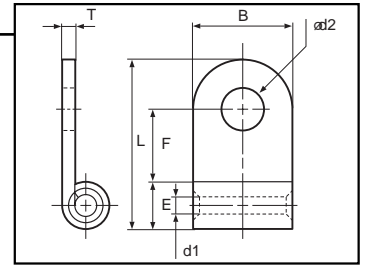
**Maximum Electrical Current:** 125 Amps

**Maximum Temperature Rating:** 176°C

**Material Thickness (T):** .067, J Type .071

**Barrel ID (d1):** .303 **J Type:** .303

**Barrel OD (E):** .453 **J Type:** .453



HOFFMAN PART NO.	STUD SIZE	DIMENSIONS (INCHES)				LENGTH	UL	*PNEUMATIC TOOL
		STUD DIAMETER d2	TONGUE WIDTH W	STUD CLEARANCE F	L			
FG45/J	10	0.209	0.551	0.378	1.102	Y	YA5	
FG46	1/4	0.252	0.551	0.382	1.110	Y		
FG46/J	1/4	0.252	0.551	0.378	1.102	Y		
FG48	5/16	0.331	0.689	0.543	1.339	Y		
FG48/J	5/16	0.331	0.689	0.543	1.339	Y		
FG49	3/8	0.413	0.689	0.543	1.339	Y		

**2 AWG Non-Insulated Flag Ring**

**Material:** Tin Plated Copper with Brazed Seam

**Insulation Material:** None

**Maximum Electrical Current:** 170 Amps

**Maximum Temperature Rating:** 176°C

**Material Thickness (T):** .071

**Barrel ID (d1):** .370 **J Type:** .370

**Barrel OD (E):** .524 **J Type:** .524

HOFFMAN PART NO.	STUD SIZE	DIMENSIONS (INCHES)				LENGTH	UL	*PNEUMATIC TOOL
		STUD DIAMETER d2	TONGUE WIDTH W	STUD CLEARANCE F	L			
FG26	1/4	0.252	0.72	0.535	1.421	Y	YA5	
FG26/J	1/4	0.252	0.717	0.535	1.417	Y		
FG28	5/16	0.331	0.72	0.535	1.421	Y		
FG28/J	5/16	0.331	0.717	0.535	1.417	Y		
FG29	3/8	0.413	0.72	0.535	1.421	Y		
FG29/J	3/8	0.413	0.717	0.535	1.417	Y		

\*Refer to Tool Selector Chart ([page 92-93](#)) for Tool Die Numbers.



## 1/0 AWG Non-Insulated Flag Ring

**Material:** Tin Plated Copper with Brazed Seam

**Insulation Material:** None

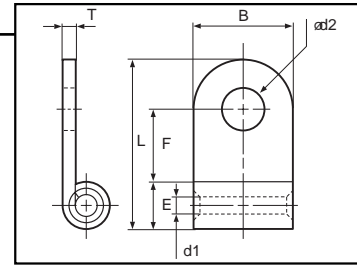
**Maximum Electrical Current:** 230 Amps

**Maximum Temperature Rating:** 176°C

**Material Thickness (T):** .071 **J Type:** .079

**Barrel ID (d1):** .449 **J Type:** .370

**Barrel OD (E):** .610 **J Type:** .524



HOFFMAN PART NO.	STUD SIZE	DIMENSIONS (INCHES)				UL	*PNEUMATIC TOOL
		STUD DIAMETER	TONGUE WIDTH	STUD CLEARANCE	LENGTH		
		d2	W	F	L		
FG1/06	1/4	0.252	0.878	0.681	1.732	Y	YA5
FG1/06/J	1/4	0.252	0.866	0.693	1.732	Y	
FG1/08	5/16	0.331	0.878	0.681	1.732	Y	
FG1/08/J	5/16	0.331	0.866	0.693	1.732	Y	
FG1/09	3/8	0.413	0.878	0.681	1.732	Y	
FG1/09/J	3/8	0.413	0.866	0.693	1.732	Y	
FG1/013	1/2	0.512	0.878	0.681	1.732	Y	
FG1/013/J	1/2	0.512	0.866	0.693	1.732	Y	

## 2/0 AWG Non-Insulated Flag Ring

**Material:** Tin Plated Copper with Brazed Seam

**Insulation Material:** None

**Maximum Electrical Current:** 265 Amps

**Maximum Temperature Rating:** 176°C

**Material Thickness (T):** .079

**Barrel ID (d1):** .524 **J Type:** .524

**Barrel OD (E):** .689 **J Type:** .689

HOFFMAN PART NO.	STUD SIZE	DIMENSIONS (INCHES)				UL	*PNEUMATIC TOOL
		STUD DIAMETER	TONGUE WIDTH	STUD CLEARANCE	LENGTH		
		d2	W	F	L		
FG2/08	5/16	0.331	0.941	0.681	1.839	Y	YA5
FG2/08/J	5/16	0.331	0.937	0.689	1.850	Y	
FG2/09	3/8	0.413	0.941	0.681	1.839	Y	
FG2/09/J	3/8	0.413	0.937	0.689	1.850	Y	
FG2/013	1/2	0.512	0.941	0.681	1.839	Y	
FG2/013/J	1/2	0.512	0.937	0.689	1.850	Y	

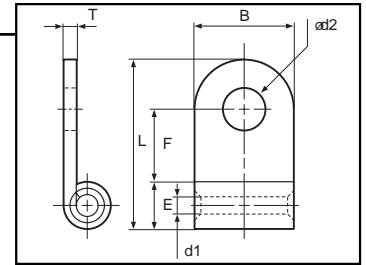
\*Refer to Tool Selector Chart ([page 92-93](#)) for Tool Die Numbers.



**3/0 AWG Non-Insulated Flag Ring**

**Material:** Tin Plated Copper with Brazed Seam  
**Insulation Material:** None  
**Maximum Electrical Current:** 310 Amps  
**Maximum Temperature Rating:** 176°C  
**Material Thickness (T):** .091

**Barrel ID (d1):** .524    **J Type:** .524  
**Barrel OD (E):** .689    **J Type:** .689



HOFFMAN PART NO.	STUD SIZE	DIMENSIONS (INCHES)				UL
		STUD DIAMETER d2	TONGUE WIDTH W	STUD CLEARANCE F	LENGTH L	
FG3/08/J	5/16	0.331	1.063	0.713	2.008	Y
FG3/09	3/8	0.413	1.063	0.701	2.000	Y
FG3/09/J	3/8	0.413	1.063	0.713	2.008	Y
FG3/013	1/2	0.512	1.063	0.701	2.000	Y
FG3/013/J	1/2	0.512	1.063	0.713	2.008	Y

**4/0 AWG Non-Insulated Flag Ring**

**Material:** Tin Plated Copper with Brazed Seam  
**Insulation Material:** None  
**Maximum Electrical Current:** 360 Amps  
**Maximum Temperature Rating:** 176°C  
**Material Thickness (T):** .091

**Barrel ID (d1):** .524  
**Barrel OD (E):** .689

HOFFMAN PART NO.	STUD SIZE	DIMENSIONS (INCHES)				UL
		STUD DIAMETER d2	TONGUE WIDTH W	STUD CLEARANCE F	LENGTH L	
FG4/08/J	5/16	0.331	1.126	0.697	2.126	Y
FG4/09/J	3/8	0.413	1.126	0.697	2.126	Y
FG4/013/J	1/2	0.512	1.126	0.697	2.126	Y

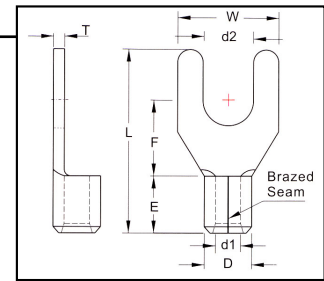


## Non-Insulated Spade Terminals

### 2622 AWG Non-Insulated Spade Terminal

**Material:** Tin Plated Copper with Brazed Seam  
**Maximum Electrical Current:** 9 Amps  
**Material Thickness (T):** .0197

**Barrel ID (d1):** .039  
**Barrel OD (D):** .079  
**Barrel Length (F):** .157



HOFFMAN PART NO.	STUD SIZE	DIMENSIONS (INCHES)				UL	TAPE MOUNTED REEL QTY	DIE FOR TAPE MOUNTED	HAND TOOL
		STUD DIAMETER d2	TONGUE WIDTH W	STUD CLEARANCE I	LENGTH L				
2622-3A	4	0.126	0.197	0.157	0.315	Y	NA	NA	YHT2622
2622-3.7A	6	0.146	0.236	0.275	0.433	Y	NA	NA	YHT2622
2622-4A	8	0.169	0.256	0.275	0.433	Y	NA	NA	YHT2622

### 2216 AWG Non-Insulated Spade Terminal

**Material:** Tin Plated Copper with Brazed Seam  
**Maximum Electrical Current:** 18 Amps  
**Material Thickness (T):** .030

**Barrel ID (d1):** .067  
**Barrel OD (D):** .134  
**Barrel Length (F):** .189

HOFFMAN PART NO.	STUD SIZE	DIMENSIONS (INCHES)				UL	TAPE MOUNTED REEL QTY	DIE FOR TAPE MOUNTED	HAND TOOL
		STUD DIAMETER d2	TONGUE WIDTH W	STUD CLEARANCE I	LENGTH L				
2216-M3A	4	0.126	0.224	0.256	0.63	Y	1000	3H2216	YHM228
2216-YS3A	6	0.146	0.252	0.256	0.63	Y	1000	3H2216	YHM228
2216-S3A	6	0.146	0.283	0.256	0.63	Y	1000	3H2216	YHM228
2216-S4A	8	0.169	0.283	0.256	0.63	Y	1000	3H2216	YHM228
2216-4A	8	0.169	0.319	0.256	0.63	Y	1000	3H2216	YHM228
2216-M5A	10	0.209	0.319	0.256	0.63	Y	1000	3H2216	YHM228
2216-6A	1/4	0.252	0.472	0.433	0.866	Y	1000	3H2216	YHM228

### 1614 AWG Non-Insulated Spade Terminal

**Material:** Tin Plated Copper with Brazed Seam  
**Maximum Electrical Current:** 30 Amps  
**Material Thickness (T):** .031

**Barrel ID (d1):** .091  
**Barrel OD (D):** .161  
**Barrel Length (F):** .189

PART NO.	STUD SIZE	DIMENSIONS (INCHES)				UL	TAPE MOUNTED REEL QT	DIE FOR TAPE MOUNTED	HAND TOOL
		STUD DIAMETER d2	TONGUE WIDTH W	STUD CLEARANCE E	LENGTH L				
1614-YS3A	6	0.146	0.236	0.256	0.63	Y	1000	3H1614	YHM228
1614-S3A	6	0.146	0.283	0.256	0.63	Y	1000	3H1614	YHM228
1614-S4A	8	0.169	0.283	0.256	0.63	Y	1000	3H1614	YHM228
1614-4A	8	0.169	0.319	0.256	0.63	Y	1000	3H1614	YHM228
1614-M5A	10	0.209	0.319	0.256	0.63	Y	1000	3H1614	YHM228
1614-5A	10	0.209	0.366	0.256	0.63	Y	1000	3H1614	YHM228
1614-6A	1/4	0.252	0.472	0.433	0.866	Y	1000	3H1614	YHM228



**1210 AWG Non-Insulated Spade Terminals**

**Material:** Tin Plated Copper with Brazed Seam

**Maximum Electrical Current:** 50 Amps

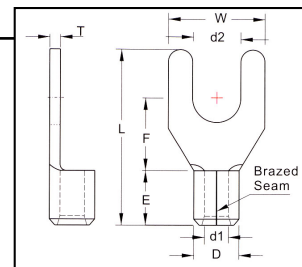
**Material Thickness (T):** .039

**Barrel ID (d1):** .134

**Barrel OD (D):** .220

**Barrel Length (F):** .236

**J type:** .268



HOFFMAN PART NO.	STUD SIZE	DIMENSIONS (INCHES)				UL	TAPE MOUNTED REEL QTY	DIE FOR TAPE MOUNTED	HAND TOOL
		STUD DIAMETER d2	TONGUE WIDTH W	STUD CLEARANCE I	LENGTH L				
1210-S3A	6	0.146	0.283	0.295	0.685	Y	1000	3H1210	YHM228
1210-S3A/J	6	0.146	0.283	0.295	0.768	Y	1000	3H1210	YHT2210
1210-S4A	8	0.169	0.327	0.276	0.728	Y	1000	3H1210	YHM228
1210-4A	8	0.169	0.354	0.276	0.728	Y	1000	3H1210	YHM228
1210-5A	10	0.209	0.354	0.276	0.728	Y	1000	3H1210	YHM228
1210-S6A	1/4	0.252	0.354	0.276	0.728	Y	1000	3H1210	YHM228
1210-6A	1/4	0.252	0.472	0.472	0.965	Y	1000	3H1210	YHM228

**Vinyl Insulated Spade Terminals**

**2216 AWG Vinyl Insulated Spade Terminals**

**Material:** Tin Plated Copper with Butted Seam

**Insulation Material:** Red Vinyl with Funnel Entry

**Maximum Electrical Current:** 18 Amps

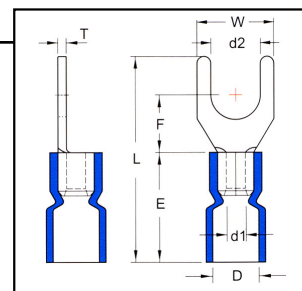
**Maximum Electrical Rating:** 75°C, 600V

**Material Thickness (T):** .030

**Barrel ID (d1):** .067

**Barrel OD (D):** .157

**Barrel Length (E):** .441



HOFFMAN PART NO.	STUD SIZE	DIMENSIONS (INCHES)				UL	TAPE MOUNTED REEL QTY	DIE FOR TAPE MOUNTED	HAND TOOL
		STUD DIAMETER d2	TONGUE WIDTH W	STUD CLEARANCE F	LENGTH L				
FVL2216M3AR2	4	0.126	0.224	0.256	0.874	Y	1000	3V2216	YNM2210
FVL2216YS3AR2	6	0.146	0.252	0.256	0.874	Y	1000	3V2216	YNM2210
FVL2216S3AR2	6	0.146	0.283	0.256	0.874	Y	1000	3V2216	YNM2210
FVL2216YS4AR2	8	0.169	0.252	0.256	0.874	Y	1000	3V2216	YNM2210
FVL2216S4AR2	8	0.169	0.283	0.256	0.874	Y	1000	3V2216	YNM2210
FVL2216M5AR2	10	0.209	0.319	0.256	0.874	Y	1000	3V2216	YNM2210
FVL2216-6AR2	1/4	0.252	0.472	0.433	1.11	Y	1000	3V2216	YNM2210



## 1614 AWG Vinyl Insulated Spade Terminals

**Material:** Tin Plated Copper with Butted Seam

**Insulation Material:** Blue Vinyl with Funnel Entry

**Maximum Electrical Current:** 30 Amps

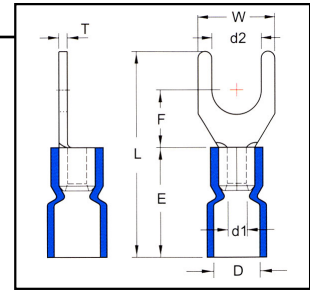
**Barrel ID (d1):** .091

**Maximum Electrical Rating:** 75°C, 600V

**Barrel OD (D):** .177

**Material Thickness (T):** .031

**Barrel Length (E):** .453



HOFFMAN PART NO.	STUD SIZE	DIMENSIONS (INCHES)				UL	TAPE MOUNTED REEL QTY	DIE FOR TAPE MOUNTED	HAND TOOL
		STUD DIAMETER	TONGUE WIDTH	STUD CLEARANCE	LENGTH				
		d2	W	F	L				
FVL1614YS3AR2	6	0.146	0.236	0.256	0.886	Y	1000	3V1614	YNM2210
FVL1614S3AR2	6	0.146	0.283	0.256	0.886	Y	1000	3V1614	YNM2210
FVL1614YS4AR2	8	0.169	0.252	0.256	0.886	Y	1000	3V1614	YNM2210
FVL1614S4AR2	8	0.169	0.283	0.256	0.886	Y	1000	3V1614	YNM2210
FVL16144AR2	8	0.169	0.311	0.256	0.886	Y	1000	3V1614	YNM2210
FVL1614M5AR2	10	0.209	0.311	0.256	0.886	Y	1000	3V1614	YNM2210
FVL16145AR2	10	0.209	0.366	0.256	0.886	Y	1000	3V1614	YNM2210
FVL16146AR2	1/4	0.252	0.472	0.433	1.110	Y	1000	3V1614	YNM2210

## 1210 AWG Vinyl Insulated Spade Terminals

**Material:** Tin Plated Copper with Butted Seam

**Insulation Material:** Yellow Vinyl with Funnel Entry

**Maximum Electrical Current:** 50 Amps

**Barrel ID (d1):** .134

**Maximum Electrical Rating:** 75°C, 600V

**Barrel OD (D):** .248

**Material Thickness (T):** .039

**Barrel Length (E):** .555

HOFFMAN PART NO.	STUD SIZE	DIMENSIONS (INCHES)				UL	TAPE MOUNTED REEL QTY	DIE FOR TAPE MOUNTED	HAND TOOL
		STUD DIAMETER	TONGUE WIDTH	STUD CLEARANCE	LENGTH				
		d2	W	F	L				
FVL1210S3AR2	6	0.146	0.283	0.295	1.004	Y	1000	3V1210	YNM2210
FVL1210S4AR2	8	0.169	0.327	0.276	1.047	Y	1000	3V1210	YNM2210
FVL12105AR2	10	0.209	0.354	0.276	1.047	Y	1000	3V1210	YNM2210
FVL12106AR2	1/4	0.252	0.472	0.472	1.283	Y	1000	3V1210	YNM2210

## Vinyl Insulated Fork Terminals with Support Sleeve

### 2216 AWG Vinyl Insulated Spade Terminals with Support Sleeve

**Material:** Tin Plated Copper with Butted Seam

**Insulation Material:** Red Vinyl with Funnel Entry Copper Support Sleeve

**Maximum Electrical Current:** 18 Amps

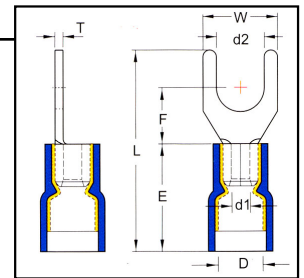
**Barrel ID (d1):** .067

**Maximum Electrical Rating:** 75°C, 600V

**Barrel OD (D):** .165

**Material Thickness (T):** .030

**Barrel Length (E):** .413



HOFFMAN PART NO.	STUD SIZE	DIMENSIONS (INCHES)				UL	TAPE MOUNTED REEL QTY	DIE FOR TAPE MOUNTED	HAND TOOL
		STUD DIAMETER d2	TONGUE WIDTH W	STUD CLEARANCE F	LENGTH L				
FVD2216M3A	4	0.126	0.224	0.256	0.846	Y	1000	3V2216	YNM2210D
FVD2216YS3A	6	0.146	0.252	0.256	0.846	Y	1000	3V2216	YNM2210D
FVD2216S3A	6	0.146	0.283	0.256	0.846	Y	1000	3V2216	YNM2210D
FVD2216S4A	8	0.169	0.283	0.256	0.846	Y	1000	3V2216	YNM2210D
FVD2216M5A	10	0.209	0.319	0.256	0.846	Y	1000	3V2216	YNM2210D
FVD22166A	1/4	0.252	0.472	0.433	1.083	Y	1000	3V2216	YNM2210D

### 1614 AWG Vinyl Insulated Spade Terminals with Support Sleeve

**Material:** Tin Plated Copper with Butted Seam

**Insulation Material:** Blue Vinyl with Funnel Entry Copper Support Sleeve

**Maximum Electrical Current:** 30 Amps

**Barrel ID (d1):** .091

**Maximum Electrical Rating:** 75°C, 600V

**Barrel OD (D):** .197

**Material Thickness (T):** .031

**Barrel Length (E):** .413

HOFFMAN PART NO.	STUD SIZE	DIMENSIONS (INCHES)				UL	TAPE MOUNTED REEL QT	DIE FOR TAPE MOUNTED	HAND TOOL
		STUD DIAMETER d2	TONGUE WIDTH W	STUD CLEARANCE F	LENGTH L				
FVD1614YS3A	6	0.146	0.236	0.256	0.846	Y	1000	3V1614	YNM2210D
FVD1614S3A	6	0.146	0.283	0.256	0.846	Y	1000	3V1614	YNM2210D
FVD1614YS4A	8	0.169	0.252	0.256	0.846	Y	1000	3V1614	YNM2210D
FVD1614S4A	8	0.169	0.283	0.256	0.846	Y	1000	3V1614	YNM2210D
FVD16144A	8	0.169	0.311	0.256	0.846	Y	1000	3V1614	YNM2210D
FVD1614M5A	10	0.209	0.311	0.256	0.846	Y	1000	3V1614	YNM2210D
FVD16145A	10	0.209	0.366	0.256	0.846	Y	1000	3V1614	YNM2210D
FVD16146A	1/4	0.252	0.472	0.433	1.083	Y	1000	3V1614	YNM2210D



## 1210 AWG Vinyl Insulated Spade Terminals with Support Sleeve

**Material:** Tin Plated Copper with Butted Seam

**Insulation Material:** Yellow Vinyl with Funnel Entry Copper Support Sleeve

**Maximum Electrical Current:** 50 Amps

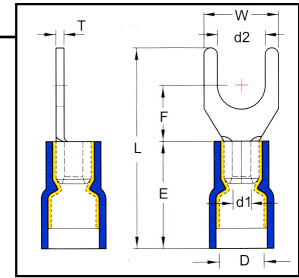
**Barrel ID (d1):** .134

**Maximum Electrical Rating:** 75°C, 600V

**Barrel OD (D):** .268

**Material Thickness (T):** .039

**Barrel Length (E):** .531



HOFFMAN PART NO.	STUD SIZE	DIMENSIONS (INCHES)				UL	TAPE MOUNTED REEL QTY	DIE FOR TAPE MOUNTED	HAND TOOL
		STUD DIAMETER d2	TONGUE WIDTH W	STUD CLEARANCE F	LENGTH L				
FVD1210S3A	6	.146	.283	.295	.980	Y	1000	3V1210	YNM2210D
FVD1210S4A	8	.169	.327	.276	1.024	Y	1000	3V1210	YNM2210D
FVD12105A	10	.209	.354	.276	1.024	Y	1000	3V1210	YNM2210D
FVD12106A	1/4	.252	.472	.472	1.260	Y	1000	3V1210	YNM2210D

## Nylon Insulated Spade Terminals

### 2622 AWG Nylon Insulated Spade with Support Sleeve

**Material:** Tin Plated Copper with Butted Seam

**Insulation Material:** Yellow 6/6 Nylon with Funnel Entry Copper Support Sleeve

**Maximum Electrical Current:** 8 Amps

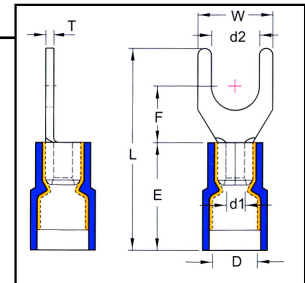
**Barrel ID (d1):** .039

**Maximum Electrical Rating:** 75°C, 600V

**Barrel OD (D):** .091

**Material Thickness (T):** .197

**Barrel Length (E):** .315



HOFFMAN PART NO.	STUD SIZE	DIMENSIONS (INCHES)				UL	TAPE MOUNTED REEL QT	DIE FOR TAPE MOUNTED	HAND TOOL
		STUD DIAMETER d2	TONGUE WIDTH W	STUD CLEARANCE F	LENGTH L				
FND26222A/J	4	0.126	0.181	0.177	0.673	N	NA	NA	YNT2622
FND26223.7A/J	6	0.146	0.252	0.303	0.760	N	NA	NA	YNT2622
FND26224A/J	8	0.169	0.276	0.248	0.801	N	NA	NA	YNT2622



**2216 AWG Nylon Insulated Spade Terminals with Support Sleeve**

**Material:** Tin Plated Copper with Butted Seam

**Insulation Material:** Red 6/6 Nylon with Funnel Entry Copper Support Sleeve

**Maximum Electrical Current:** 18 Amps

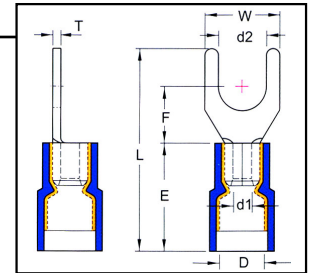
**Barrel ID (d1):** .067

**Maximum Electrical Rating:** 75°C, 600V

**Barrel OD (D):** .177

**Material Thickness (T):** .030

**Barrel Length (E):** .433



HOFFMAN PART NO.	STUD SIZE	DIMENSIONS (INCHES)				UL	TAPE MOUNTED REEL QT	DIE FOR TAPE MOUNTED	HAND TOOL
		STUD DIAMETER	TONGUE WIDTH	STUD CLEARANCE	LENGTH				
		d2	W	F	L				
FND2216M3A	4	0.126	0.224	0.256	0.866	Y	1000	3V2216	YNM2210D
FND2216YS3A	6	0.146	0.252	0.256	0.866	Y	1000	3V2216	YNM2210D
FND2216S3A	6	0.146	0.283	0.256	0.866	Y	1000	3V2216	YNM2210D
FND2216S4A	8	0.169	0.283	0.256	0.866	Y	1000	3V2216	YNM2210D
FND2216M5A	10	0.209	0.319	0.256	0.866	Y	1000	3V2216	YNM2210D
FND22166A	1/4	0.252	0.472	0.433	1.102	Y	1000	3V2216	YNM2210D

**1614 AWG Nylon Insulated Spade Terminals with Support Sleeve**

**Material:** Tin Plated Copper with Butted Seam

**Insulation Material:** Blue PVC Vinyl with Funnel Entry Copper Support Sleeve

**Maximum Electrical Current:** 30 Amps

**Barrel ID (d1):** .091

**Maximum Electrical Rating:** 75°C, 600V

**Barrel OD (D):** .205

**Material Thickness (T):** .031

**Barrel Length (E):** .433

HOFFMAN PART NO.	STUD SIZE	DIMENSIONS (INCHES)				UL	TAPE MOUNTED REEL QT	DIE FOR TAPE MOUNTED	HAND TOOL
		STUD DIAMETER	TONGUE WIDTH	STUD CLEARANCE	LENGTH				
		d2	W	F	L				
FND1614YS3A	6	0.146	0.236	0.256	0.866	Y	1000	3V1614	YNM2210D
FND1614S3A	6	0.146	0.283	0.256	0.866	Y	1000	3V1614	YNM2210D
FND1614YS4A	8	0.169	0.252	0.256	0.866	Y	1000	3V1614	YNM2210D
FND1614S4A	8	0.169	0.283	0.256	0.866	Y	1000	3V1614	YNM2210D
FND16144A	8	0.169	0.311	0.256	0.866	Y	1000	3V1614	YNM2210D
FND1614M5A	10	0.209	0.311	0.256	0.866	Y	1000	3V1614	YNM2210D
FND16145A	10	0.209	0.366	0.256	0.866	Y	1000	3V1614	YNM2210D
FND16146A	1/4	0.252	0.472	0.433	1.102	Y	1000	3V1614	YNM2210D



## 1210 AWG Nylon Insulated Spade Terminals with Support Sleeve

**Material:** Tin Plated Copper with Butted Seam

**Insulation Material:** Yellow 6/6 Nylon with Funnel Entry Copper Support Sleeve

**Maximum Electrical Current:** 50 Amps

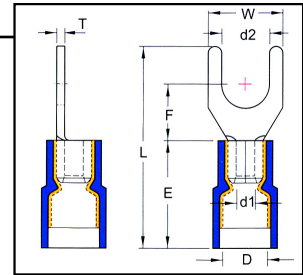
**Barrel ID (d1):** .134

**Maximum Electrical Rating:** 75°C, 600V

**Barrel OD (D):** .276

**Material Thickness (T):** .039

**Barrel Length (E):** .512



HOFFMAN PART NO.	STUD SIZE	DIMENSIONS (INCHES)				UL	TAPE MOUNTED REEL QT	DIE FOR TAPE MOUNTED	HAND TOOL
		STUD DIAMETER d2	TONGUE WIDTH W	STUD CLEARANCE F	LENGTH L				
FND1210S3A	6	0.146	0.283	0.295	0.961	Y	500	3V1210	YNM2210D
FND1210S4A	8	0.169	0.327	0.276	1.004	Y	500	3V1210	YNM2210D
FND1210-5A	10	0.209	0.354	0.276	1.004	Y	500	3V1210	YNM2210D
FND1210S6A	1/4	0.252	0.354	0.276	1.004	Y	500	3V1210	YNM2210D
FND1210-6A	1/4	0.252	0.472	0.472	1.24	Y	500	3V1210	YNM2210D

[Click Here for Hand Tools](#)

(Crimping Tools Section - page 96)



## Non-Insulated Flanged Spade Terminal

### 2216 AWG Non-Insulated Flanged Spade

**Material:** Tin Plated Copper with Brazed Seam

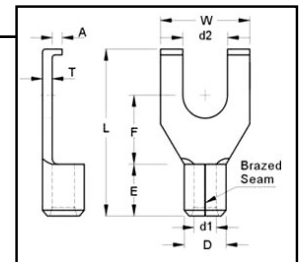
**Maximum Electrical Current:** 18 Amps

**Material Thickness (T):** .030

**Barrel ID (d1):** .067

**Barrel OD (D):** .134

**Barrel Length (E):** .189



HOFFMAN PART NO.	STUD SIZE	DIMENSIONS (INCHES)					UL	TAPE MOUNTED REEL QTY	DIE FOR TAPE MOUNTED	HAND TOOL
		STUD DIAMETER d2	TONGUE WIDTH W	STUD CLEARANCE F	LENGTH L	FLANGE HEIGHT A				
2216S3B	6	0.146	0.335	0.283	0.768	0.059	Y	1000	3H2216	YHM226
2216S4B	8	0.169	0.295	0.201	0.551	0.059	Y	1000	3H2216	YHM226
2216S5B	10	0.209	0.295	0.201	0.551	0.059	Y	1000	3H2216	YHM226

### 1614 AWG Non-Insulated Flanged Spade

**Material:** Tin Plated Copper with Brazed Seam

**Maximum Electrical Current:** 30 Amps

**Material Thickness (T):** .031

**Barrel ID (d1):** .091

**Barrel OD (D):** .161

**Barrel Length (E):** .189

HOFFMAN PART NO.	STUD SIZE	DIMENSIONS (INCHES)					UL	TAPE MOUNTED REEL QTY	DIE FOR TAPE MOUNTED	HAND TOOL
		STUD DIAMETER d2	TONGUE WIDTH W	STUD CLEARANCE F	LENGTH L	FLANGE HEIGHT A				
1614S3B	6	0.146	0.335	0.283	0.709	0.059	Y	1000	3H2216	YHM226
1614S4B	8	0.169	0.335	0.283	0.709	0.059	Y	1000	3H2216	YHM226
1614S5B	10	0.209	0.335	0.283	0.709	0.059	Y	1000	3H2216	YHM226

### 1210 AWG Non-Insulated Flanged Spade

**Material:** Tin Plated Copper with Brazed Seam

**Maximum Electrical Current:** 50 Amps

**Material Thickness (T):** .039

**Barrel ID (d1):** .134

**Barrel OD (D):** .220

**Barrel Length (E):** .236

HOFFMAN PART NO.	STUD SIZE	DIMENSIONS (INCHES)					UL	TAPE MOUNTED REEL QTY	DIE FOR TAPE MOUNTED	HAND TOOL
		STUD DIAMETER d2	TONGUE WIDTH W	STUD CLEARANCE F	LENGTH L	FLANGE HEIGHT A				
1210S3B	6	0.146	0.299	0.244	0.728	0.059	Y	1000	3H1210	YHM226
1210S4B	8	0.169	0.299	0.244	0.728	0.059	Y	1000	3H1210	YHM226
1210S5B	10	0.209	0.299	0.244	0.728	0.059	Y	1000	3H1210	YHM226

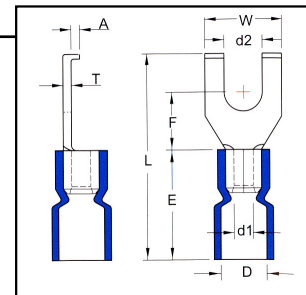


## Vinyl Insulated Flanged Spade Terminals

### 2216 AWG Vinyl Insulated Flanged Spade

**Material:** Tin Plated Copper with Butted Seam  
**Insulation Material:** Red PVC Vinyl  
**Maximum Electrical Current:** 18 Amps  
**Maximum Electrical Rating:** 75°C, 600V  
**Material Thickness (T):** .030

**Barrel ID (d1):** .067  
**Barrel OD (D):** .157  
**Barrel Length (E):** .441    **J Type:** .394



HOFFMAN PART NO.	STUD SIZE	DIMENSIONS (INCHES)					UL	TAPE MOUNTED REEL QTY	DIE FOR TAPE MOUNTED	HAND TOOL
		STUD DIAMETER	TONGUE WIDTH	STUD CLEARANCE	LENGTH	FLANGE HEIGHT				
		d2	W	F	L	A				
FVL2216S3BR2/J	6	0.146	0.295	0.201	0.752	0.059	Y	1000	3V2216	YNT2216
FVL2216S3BR	6	0.146	0.295	0.201	0.795	0.059	Y	1000	3V2216	YNM2210
FVL2216S4BR2/J	8	0.169	0.295	0.201	0.752	0.059	Y	1000	3V2216	YNT2216
FVL2216S4BR2	8	0.169	0.295	0.201	0.795	0.059	Y	1000	3V2216	YNM2210
FVL2216S5BR2/J	10	0.209	0.295	0.201	0.752	0.059	Y	1000	3V2216	YNT2216
FVL2216S5BR2	10	0.209	0.295	0.201	0.795	0.059	Y	1000	3V2216	YNM2210

### 1614 AWG Vinyl Insulated Flanged Spade

**Material:** Tin Plated Copper with Butted Seam  
**Insulation Material:** Blue PVC Vinyl  
**Maximum Electrical Current:** 50 Amps  
**Maximum Electrical Rating:** 75°C, 600V  
**Material Thickness (T):** .031

**Barrel ID (d1):** .091  
**Barrel OD (D):** .177    **J Type:** .177  
**Barrel Length (E):** .453    **J Type:** .394

HOFFMAN PART NO.	STUD SIZE	DIMENSIONS (INCHES)					UL	TAPE MOUNTED REEL QTY	DIE FOR TAPE MOUNTED	HAND TOOL
		STUD DIAMETER	TONGUE WIDTH	STUD CLEARANCE	LENGTH	FLANGE HEIGHT				
		d2	W	F	L	A				
FVL1614S3BR2/J	6	0.146	0.335	0.283	0.819	0.059	Y	1000	3V1614	YNT1614
FVL1614S3BR2	6	0.146	0.335	0.283	0.965	0.059	Y	1000	3V1614	YNM2210
FVL1614S4BR2/J	8	0.169	0.335	0.283	0.819	0.059	Y	1000	3V1614	YNT1614
FVL1614S4BR2	8	0.169	0.335	0.283	0.965	0.059	Y	1000	3V1614	YNM2210
FVL1614S5BR2/J	10	0.209	0.335	0.283	0.819	0.059	Y	1000	3V1614	YNT1614
FVL1614S5BR2	10	0.209	0.335	0.283	0.965	0.059	Y	1000	3V1614	YNM2210



**1210 AWG Vinyl Insulated Flanged Spade**

**Material:** Tin Plated Copper with Butted Seam

**Insulation Material:** Yellow PVC Vinyl

**Maximum Electrical Current:** 50 Amps

**Maximum Electrical Rating:** 75°C, 600V

**Material Thickness (T):** .039

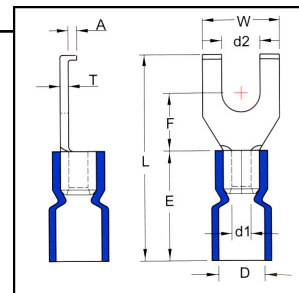
**Barrel ID (d1):** .134

**Barrel OD (D):** .248

**Barrel Length (E):** .555

**J Type:** .268

**J Type:** .551



HOFFMAN PART NO.	STUD SIZE	DIMENSIONS (INCHES)						UL	TAPE MOUNTED REEL QTY	DIE FOR TAPE MOUNTED	HAND TOOL
		STUD DIAMETER	TONGUE WIDTH	STUD CLEARANCE	LENGTH	FLANGE HEIGHT					
		d2	W	F	L	A					
FVL1210S3BR2	6	0.146	0.299	0.244	1.047	0.059	Y	1000	3V1210	YNM2210	
FVL1210S3BR2/J	6	0.146	0.299	0.244	0.992	0.059	Y	1000	3V1210	YNT1210S	
FVL1210S4BR2	8	0.169	0.299	0.244	1.047	0.059	Y	1000	3V1210	YNM2210	
FVL1210S4BR2/J	8	0.169	0.299	0.244	0.992	0.059	Y	1000	3V1210	YNT1210S	
FVL1210S5BR2	10	0.209	0.299	0.244	1.047	0.059	Y	1000	3V1210	YNM2210	
FVL1210S5BR2/J	10	0.209	0.299	0.244	0.992	0.059	Y	1000	3V1210	YNT1210S	

**Vinyl Insulated Flanged Spade Terminal with Copper Support Sleeve**

**2216 AWG Vinyl Insulated Flanged Spade with Copper Support Sleeve**

**Material:** Tin Plated Copper with Butted Seam

**Insulation Material:** Red PVC Vinyl with Funnel Entry Copper Support Sleeve

**Maximum Electrical Current:** 18 Amps

**Maximum Electrical Rating:** 75°C, 600V

**Material Thickness (T):** .030

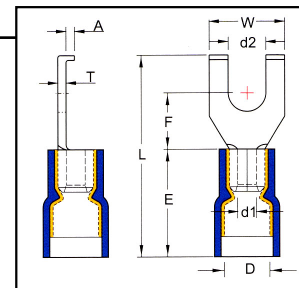
**Barrel ID (d1):** .067

**Barrel OD (D):** .165

**Barrel Length (E):** .413

**J Type:** .157

**J Type:** .378



HOFFMAN PART NO.	STUD SIZE	DIMENSIONS (INCHES)						UL	TAPE MOUNTED REEL QTY	DIE FOR TAPE MOUNTED	HAND TOOL
		STUD DIAMETER	TONGUE WIDTH	STUD CLEARANCE	LENGTH	FLANGE HEIGHT					
		d2	W	F	L	A					
FVD2216S3B/J	6	0.146	0.295	0.201	0.705	0.059	Y	1000	3V2216	YNT2216	
FVD2216S3B	6	0.146	0.295	0.201	0.768	0.059	Y	1000	3V2216	YNM2210D	
FVD2216S4B/J	8	0.169	0.295	0.201	0.705	0.059	Y	1000	3V2216	YNT2216	
FVD2216S4B	8	0.169	0.295	0.201	0.768	0.059	Y	1000	3V2216	YNM2210D	
FVD2216S5B/J	10	0.209	0.295	0.201	0.705	0.059	Y	1000	3V2216	YNT2216	
FVD2216S5B	10	0.209	0.295	0.201	0.768	0.059	Y	1000	3V2216	YNM2210D	



## 1614 AWG Vinyl Insulated Flanged Spade with Copper Support Sleeve

**Material:** Tin Plated Copper with Butted Seam

**Insulation Material:** Blue PVC Vinyl with Funnel Entry Copper Support Sleeve

**Maximum Electrical Current:** 30 Amps

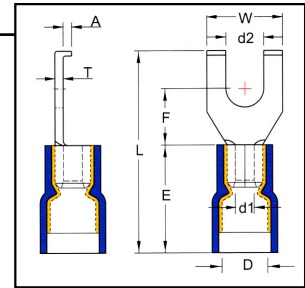
**Maximum Electrical Rating:** 75°C, 600V

**Material Thickness (T):** .031

**Barrel ID (d1):** .091

**Barrel OD (D):** .197 **J Type:** .185

**Barrel Length (E):** .413 **J Type:** .378



HOFFMAN PART NO.	STUD SIZE	DIMENSIONS (INCHES)					UL	TAPE MOUNTED REEL QTY	DIE FOR TAPE MOUNTED	HAND TOOL
		STUD DIAMETER	TONGUE WIDTH	STUD CLEARANCE	LENGTH	FLANGE HEIGHT				
		d2	W	F	L	A				
FVD1614S3B	6	0.146	0.335	0.283	0.925	0.059	Y	1000	3V1614	YNM2210D
FVD1614S3B/J	6	0.146	0.335	0.283	0.772	0.059	Y	1000	3V1614	YNT1614
FVD1614S4B	8	0.169	0.335	0.283	0.925	0.059	Y	1000	3V1614	YNM2210D
FVD1614S4B/J	8	0.169	0.335	0.283	0.772	0.059	Y	1000	3V1614	YNT1614
FVD1614S5B	10	0.209	0.335	0.283	0.925	0.059	Y	1000	3V1614	YNM2210D
FVD1614S5B/J	10	0.209	0.335	0.283	0.772	0.059	Y	1000	3V1614	YNT1614

## 1210 AWG Vinyl Insulated Flanged Spade with Copper Support Sleeve

**Material:** Tin Plated Copper with Butted Seam

**Insulation Material:** Yellow PVC Vinyl with Funnel Entry Copper Support Sleeve

**Maximum Electrical Current:** 50 Amps

**Maximum Electrical Rating:** 75°C, 600V

**Material Thickness (T):** .039

**Barrel ID (d1):** .134

**Barrel OD (D):** .268 **J Type:** .256

**Barrel Length (E):** .531 **J Type:** .551

HOFFMAN PART NO.	STUD SIZE	DIMENSIONS (INCHES)					UL	TAPE MOUNTED REEL QTY	DIE FOR TAPE MOUNTED	HAND TOOL
		STUD DIAMETER	TONGUE WIDTH	STUD CLEARANCE	LENGTH	FLANGE HEIGHT				
		d2	W	F	L	A				
FVD1210S3B	6	0.146	0.299	0.244	1.024	0.059	Y	1000	3V1210	YNM2210D
FVD1210S3B/J	6	0.146	0.299	0.244	0.992	0.059	Y	1000	3V1210	YNT1210S
FVD1210S4B	8	0.169	0.299	0.244	1.024	0.059	Y	1000	3V1210	YNM2210D
FVD1210S4B/J	8	0.169	0.299	0.244	0.992	0.059	Y	1000	3V1210	YNT1210S
FVD1210S5B	10	0.209	0.335	0.295	1.083	0.059	Y	1000	3V1210	YNM2210D
FVD1210S5B/J	10	0.209	0.299	0.244	0.992	0.059	Y	1000	3V1210	YNT1210S



# Nylon Insulated Flanged Spade Terminal with Support Sleeve

## 2216 AWG Nylon Insulated Flanged Spade with Copper Support Sleeve

**Material:** Tin Plated Copper with Butted Seam

**Insulation Material:** Red 6/6 Nylon with Funnel Entry Copper Support Sleeve

**Maximum Electrical Current:** 18 Amps

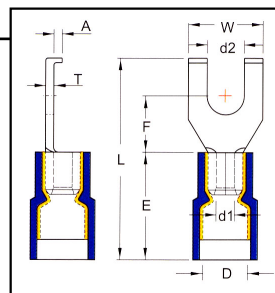
**Maximum Electrical Rating:** 75°C, 600V

**Material Thickness:** (T) .030

**Barrel ID (d1):** .067

**Barrel OD (D):** .177 **J Type:** .157

**Barrel Length (E):** .433 **J Type:** .378



HOFFMAN PART NO.	STUD SIZE	DIMENSIONS (INCHES)					UL	TAPE MOUNTED REEL QTY	DIE FOR TAPE MOUNTED	HAND TOOL
		STUD DIAMETER	TONGUE WIDTH	STUD CLEARANCE	LENGTH	FLANGE HEIGHT				
		d2	W	F	L	A				
FND2216S3B	6	0.146	0.295	0.201	0.787	0.059	Y	1000	3V2216	YNM2210D
FND2216S3B/J	6	0.146	0.295	0.201	0.705	0.059	Y	1000	3V2216	YNT2216
FND2216S4B	8	0.169	0.295	0.201	0.787	0.059	Y	1000	3V2216	YNM2210D
FND2216S4B/J	8	0.169	0.295	0.201	0.705	0.059	Y	1000	3V2216	YNT2216
FND2216S5B	10	0.209	0.295	0.201	0.787	0.059	Y	1000	3V2216	YNM2210D
FND2216S5B/J	10	0.209	0.295	0.201	0.705	0.059	Y	1000	3V2216	YNT2216

## 1614 AWG Nylon Insulated Flanged Spade with Copper Support Sleeve

**Material:** Tin Plated Copper with Butted Seam

**Insulation Material:** Blue 6/6 Nylon with Funnel Entry Copper Support Sleeve

**Maximum Electrical Current:** 30 Amps

**Maximum Electrical Rating:** 75°C, 600V

**Material Thickness (T):** .031

**Barrel ID (d1):** .091

**Barrel OD (D):** .205 **J Type:** .185

**Barrel Length (E):** .433 **J Type:** .378

HOFFMAN PART NO.	STUD SIZE	DIMENSIONS (INCHES)					UL	TAPE MOUNTED REEL QTY	DIE FOR TAPE MOUNTED	HAND TOOL
		STUD DIAMETER	TONGUE WIDTH	STUD CLEARANCE	LENGTH	FLANGE HEIGHT				
		d2	W	F	L	A				
FND1614S3B	6	0.146	0.295	0.205	0.807	0.059	Y	1000	3V1614	YNM2210D
FND1614S3B/J	6	0.146	0.295	0.201	0.705	0.059	Y	1000	3V2216	YNT2216
FND1614S4B/J	8	0.169	0.295	0.201	0.705	0.059	Y	1000	3V2216	YNT2216
FND1614S4B	8	0.169	0.295	0.205	0.807	0.059	Y	1000	3V1614	YNM2210D
FND1614S5B	10	0.209	0.295	0.205	0.807	0.059	Y	1000	3V1614	YNM2210D
FND1614S5B/J	10	0.209	0.295	0.201	0.705	0.059	Y	1000	3V2216	YNT2216



## 1210 AWG Nylon Insulated Flanged Spade with Copper Support Sleeve

**Material:** Tin Plated Copper with Butted Seam

**Insulation Material:** Yellow 6/6 Nylon with Funnel Entry Copper Support Sleeve

**Maximum Electrical Current:** 50 Amps

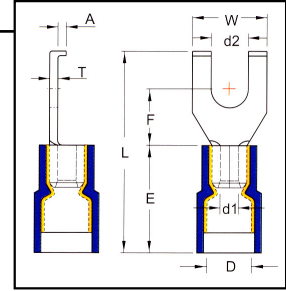
**Maximum Electrical Rating:** 75°C, 600V

**Material Thickness (T):** .039

**Barrel ID (d1):** .134

**Barrel OD (D):** .276     **J Type:** .157

**Barrel Length (E):** .512     **J Type:** .378



HOFFMAN PART NO.	STUD SIZE	DIMENSIONS (INCHES)						UL	TAPE MOUNTED REEL QTY	DIE FOR TAPE MOUNTED	HAND TOOL
		STUD DIAMETER	TONGUE WIDTH	STUD CLEARANCE	LENGTH	FLANGE HEIGHT					
		d2	W	F	L	A					
FND1210S3B	6	0.146	0.335	0.295	1.063	0.059	Y	1000	3V1210	YNM2210D	
FND1210S3B/J	6	0.146	0.299	0.244	0.992	0.059	Y	1000	3V1210	YNT1210S	
FND1210S4B	8	0.169	0.335	0.295	1.063	0.059	Y	1000	3V1210	YNM2210D	
FND1210S4B/J	8	0.169	0.299	0.244	0.992	0.059	Y	1000	3V1210	YNT1210S	
FND1210S5B	10	0.209	0.335	0.295	1.063	0.059	Y	1000	3V1210	YNM2210D	
FND1210S5B/J	10	0.209	0.299	0.244	0.992	0.059	Y	1000	3V1210	YNT1210S	

**[Click Here for Hand Tools](#)**  
(Crimping Tools Section - page 96)





## Non-Insulated Locking Spade Terminals

### 2216 AWG Non-Insulated Locking Spade

**Material:** Tin Plated Copper with Brazed Seam

**Maximum Electrical Current:** 19 Amps

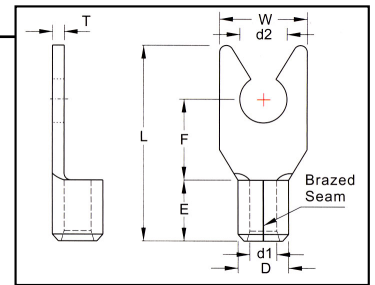
**Maximum Electrical Rating:** 176°C

**Material Thickness:** .030

**Barrel ID (d1):** .067

**Barrel OD (D):** .134

**Barrel Length (E):** .189



HOFFMAN PART NO.	STUD SIZE	DIMENSIONS (INCHES)				UL	TAPE MOUNTED REEL QTY	DIE FOR TAPE MOUNTED	HAND TOOL
		STUD DIAMETER d2	TONGUE WIDTH W	STUD CLEARANCE F	LENGTH L				
WS22163LST	6	0.146	0.252	0.256	0.63	Y	1000	3H2216	YHM228
WS22164LST	8	0.169	0.319	0.256	0.63	Y	1000	3H2216	or
WS22165LST	10	0.209	0.319	0.256	0.63	Y	1000	3H2216	IZUMI 5N18

### 1614 AWG Non-Insulated Locking Spade

**Material:** Tin Plated Copper with Brazed Seam

**Maximum Electrical Current:** 27 Amps

**Maximum Electrical Rating:** 176°C

**Material Thickness:** .031

**Barrel ID (d1):** .091

**Barrel OD (D):** .161

**Barrel Length (E):** .189

HOFFMAN PART NO.	STUD SIZE	DIMENSIONS (INCHES)				UL	TAPE MOUNTED REEL QTY	DIE FOR TAPE MOUNTED	HAND TOOL
		STUD DIAMETER d2	TONGUE WIDTH W	STUD CLEARANCE F	LENGTH L				
WS16143LST	6	0.146	0.236	0.256	0.63	Y	1000	3H1614	YHM228
WS16144LST	8	0.169	0.319	0.256	0.63	Y	1000	3H1614	or
WS16145LST	10	0.209	0.319	0.256	0.63	Y	1000	3H1614	IZUMI 5N18

### 1210 AWG Non-Insulated Locking Spade

**Material:** Tin Plated Copper with Brazed Seam

**Maximum Electrical Current:** 48 Amps

**Maximum Electrical Rating:** 176°C

**Material Thickness:** .039

**Barrel ID (d1):** .134

**Barrel OD (D):** .220

**Barrel Length (E):** .236

HOFFMAN PART NO.	STUD SIZE	DIMENSIONS (INCHES)				UL	TAPE MOUNTED REEL QTY	DIE FOR TAPE MOUNTED	HAND TOOL
		STUD DIAMETER d2	TONGUE WIDTH W	STUD CLEARANCE F	LENGTH L				
WS12103LST	6	0.146	0.327	0.276	0.717	Y	1000	3H1210	YHM228
WS12104LST	8	0.169	0.327	0.276	0.717	Y	1000	3H1210	or
WS12105LST	10	0.209	0.354	0.276	0.717	Y	1000	3H1210	IZUMI 5N18

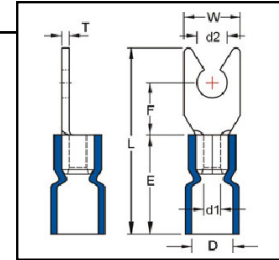


## Vinyl Insulated Locking Spade Terminals

### 2216 AWG PVC Vinyl Insulated Locking Spade

**Material:** Tin Plated Copper with Butted Seam  
**Insulation Material:** Red PVC Vinyl with Funnel Entry  
**Maximum Electrical Current:** 19 Amps  
**Maximum Electrical Rating:** 75°C, 600V  
**Material Thickness:** .030

**Barrel ID (d1):** .067  
**Max Insulation (D):** .134  
**Barrel Length (E):** .189



HOFFMAN PART NO.	STUD SIZE	DIMENSIONS (INCHES)				UL	TAPE MOUNTED REEL QTY	DIE FOR TAPE MOUNTED	HAND TOOL
		STUD DIAMETER d2	TONGUE WIDTH W	STUD CLEARANCE F	LENGTH L				
FVL22163LSR2	6	0.146	0.252	0.256	0.874	Y	1000	3V2216	YNM2210
FVL22164LSR2	8	0.169	0.314	0.256	0.874	Y	1000	3V2216	or
FVL22165LSR2	10	0.209	0.374	0.256	0.874	Y	1000	3V2216	IZUMI #34

### 1614 AWG PVC Vinyl Insulated Locking Spade

**Material:** Tin Plated Copper with Butted Seam  
**Insulation Material:** Blue PVC Vinyl with Funnel Entry  
**Maximum Electrical Current:** 27 Amps  
**Maximum Electrical Rating:** 75°C, 600V  
**Material Thickness:** .031

**Barrel ID (d1):** .091  
**Max Insulation (D):** .161  
**Barrel Length (E):** .189

HOFFMAN PART NO.	STUD SIZE	DIMENSIONS (INCHES)				UL	TAPE MOUNTED REEL QTY	DIE FOR TAPE MOUNTED	HAND TOOL
		STUD DIAMETER d2	TONGUE WIDTH W	STUD CLEARANCE F	LENGTH L				
FVL16143LSR2	6	0.146	0.236	0.256	0.886	Y	1000	3V1614	YNM2210
FVL16144LSR2	8	0.169	0.319	0.256	0.886	Y	1000	3V1614	or
FVL16145LSR2	10	0.209	0.319	0.256	0.886	Y	1000	3V1614	IZUMI #34

### 1210 AWG PVC Vinyl Insulated Locking Spade

**Material:** Tin Plated Copper with Butted Seam  
**Insulation Material:** Yellow PVC Vinyl with Funnel Entry  
**Maximum Electrical Current:** 48 Amps  
**Maximum Electrical Rating:** 75°C, 600V  
**Material Thickness:** .031

**Barrel ID (d1):** .134  
**Max Insulation (D):** .248  
**Barrel Length (E):** 236

HOFFMAN PART NO.	STUD SIZE	DIMENSIONS (INCHES)				UL	TAPE MOUNTED REEL QTY	DIE FOR TAPE MOUNTED	HAND TOOL
		STUD DIAMETER d2	TONGUE WIDTH W	STUD CLEARANCE F	LENGTH L				
FVL12103LSR2	6	0.146	0.327	0.276	1.035	Y	1000	3V1210	YNM2210
FVL12104LSR2	8	0.169	0.327	0.276	1.035	Y	1000	3V1210	or
FVL12105LSR2	10	0.209	0.354	0.276	1.035	Y	1000	3V1210	IZUMI #5



# Vinyl Insulated Locking Spade Terminals with Copper Support Sleeve

## 2216 AWG Vinyl Insulated Locking Spade with Copper Support Sleeve

**Material:** Tin Plated Copper with Butted Seam

**Insulation Material:** Red Vinyl with Funnel Entry Copper Support Sleeve

**Maximum Electrical Current:** 19 Amps

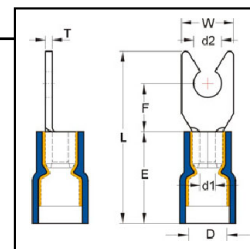
**Barrel ID (d1):** .067

**Maximum Electrical Rating:** 75°C, 600V

**Max Insulation (D):** .165

**Material Thickness:** .030

**Barrel Length (E):** .189



HOFFMAN PART NO.	STUD SIZE	DIMENSIONS (INCHES)					UL	TAPE MOUNTED REEL QTY	DIE FOR TAPE MOUNTED	HAND TOOL
		STUD DIAMETER	TONGUE WIDTH	STUD CLEARANCE	LENGTH					
		d2	W	F	L					
FVD22163LST	6	0.146	0.252	0.256	0.846	Y	1000	3V2216D	YNM2210D	
FVD22164LST	8	0.169	0.319	0.256	0.846	Y	1000	3V2216D	or	
FVD22165LST	10	0.209	0.319	0.256	0.846	Y	1000	3V2216D	IZUMI # 34	

## 1614 AWG Vinyl Insulated Locking Spade with Copper Support Sleeve

**Material:** Tin Plated Copper with Butted Seam

**Insulation Material:** Blue Vinyl with Funnel Entry Copper Support Sleeve

**Maximum Electrical Current:** 27 Amps

**Barrel ID (d1):** 0.09

**Maximum Electrical Rating:** 75°C, 600V

**Max Insulation (D):** 0.197

**Material Thickness:** 0.031

**Barrel Length (E):** .189

HOFFMAN PART NO.	STUD SIZE	DIMENSIONS (INCHES)					UL	TAPE MOUNTED REEL QTY	DIE FOR TAPE MOUNTED	HAND TOOL
		STUD DIAMETER	TONGUE WIDTH	STUD CLEARANCE	LENGTH					
		d2	W	F	L					
FVD16143LST	6	0.146	0.236	0.256	0.846	Y	1000	3V1613D	YNM2210D	
FVD16144LST	8	0.169	0.319	0.256	0.846	Y	1000	3V1613D	or	
FVD16145LST	10	0.209	0.319	0.256	0.846	Y	1000	3V1613D	Izumi # 34	

## 1210 AWG Vinyl Insulated Locking Spade with Copper Support Sleeve

**Material:** Tin Plated Copper with Butted Seam

**Insulation Material:** Yellow Vinyl with Funnel Entry Copper Support Sleeve

**Maximum Electrical Current:** 48 Amps

**Barrel ID (d1):** .134

**Maximum Electrical Rating:** 75°C, 600V

**Max Insulation (D):** .276

**Material Thickness:** .039

**Barrel Length (E):** .512

HOFFMAN PART NO.	STUD SIZE	DIMENSIONS (INCHES)					UL	TAPE MOUNTED REEL QTY	DIE FOR TAPE MOUNTED	HAND TOOL
		STUD DIAMETER	TONGUE WIDTH	STUD CLEARANCE	LENGTH					
		d2	W	F	L					
FVD12103LST	6	0.146	.327	.276	1.012	Y	500	3V1210D	YNM2210D	
FVD12104LST	8	0.169	.327	.276	1.012	Y	500	3V1210D	or	
FVD12105LST	10	0.209	.354	.276	1.012	Y	500	3V1210D	Izumi #5	



## Nylon Insulated Locking Spade Terminals with Copper Support Sleeve

### 2216 AWG Nylon Insulated Locking Spade with Copper Support Sleeve

**Material:** Tin Plated Copper with Butted Seam

**Insulation Material:** Red 6/6 Nylon with Funnel Entry Copper Support Sleeve

**Maximum Electrical Current:** 19 Amps

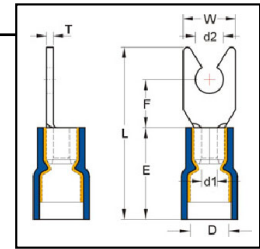
**Barrel ID (d1):** .067

**Maximum Electrical Rating:** 75°C, 600V

**Max Insulation (D):** .177

**Material Thickness:** .030

**Barrel Length (E):** .189



HOFFMAN PART NO.	STUD SIZE	DIMENSIONS (INCHES)				UL	TAPE MOUNTED REEL QTY	DIE FOR TAPE MOUNTED	HAND TOOL
		STUD DIAMETER d2	TONGUE WIDTH W	STUD CLEARANCE F	LENGTH L				
FND22163LSR2	6	0.146	0.252	0.256	0.866	Y	1000	3V2216D	YNM2210D
FND22164LSR2	8	0.169	0.319	0.256	0.866	Y	1000	3V2216D	or
FND22165LSR2	10	0.209	0.319	0.256	0.866	Y	1000	3V2216D	Izumi #34

### 1614 AWG Nylon Insulated Locking Spade with Copper Support Sleeve

**Material:** Tin Plated Copper with Butted Seam

**Insulation Material:** Blue 6/6 Nylon with Funnel Entry Copper Support Sleeve

**Maximum Electrical Current:** 27 Amps

**Barrel ID (d1):** 0.091

**Maximum Electrical Rating:** 75°C, 600V

**Max Insulation (D):** 0.205

**Material Thickness:** 0.031

**Barrel Length (E):** .189

HOFFMAN PART NO.	STUD SIZE	DIMENSIONS (INCHES)				UL	TAPE MOUNTED REEL QTY	DIE FOR TAPE MOUNTED	HAND TOOL
		STUD DIAMETER d2	TONGUE WIDTH W	STUD CLEARANCE F	LENGTH L				
FND16143LSR2	6	0.146	0.236	0.256	0.866	Y	1000	3V1614D	YNM2210D
FND16144LSR2	8	0.169	0.319	0.256	0.866	Y	1000	3V1614D	or
FND16145LSR2	10	0.209	0.319	0.256	0.866	Y	1000	3V1614D	Izumi #34

### 1210 AWG Nylon Insulated Locking Spade with Copper Support Sleeve

**Material:** Tin Plated Copper with Butted Seam

**Insulation Material:** Yellow 6/6 Nylon with Funnel Entry Copper Support Sleeve

**Maximum Electrical Current:** 48 Amps

**Barrel ID (d1):** .134

**Maximum Electrical Rating:** 75°C, 600V

**Max Insulation (D):** .276

**Material Thickness:** .039

**Barrel Length (E):** .512

HOFFMAN PART NO.	STUD SIZE	DIMENSIONS (INCHES)				UL	TAPE MOUNTED REEL QTY	DIE FOR TAPE MOUNTED	HAND TOOL
		STUD DIAMETER d2	TONGUE WIDTH W	STUD CLEARANCE F	LENGTH L				
FND12103LSR2	6	0.146	0.327	0.276	0.992	Y	1000	3V1210	YNM2210D
FND12104LSR2	8	0.169	0.327	0.276	0.992	Y	1000	3V1210	or
FND12105LSR2	10	0.209	0.354	0.276	0.992	Y	1000	3V1210	Izumi #5



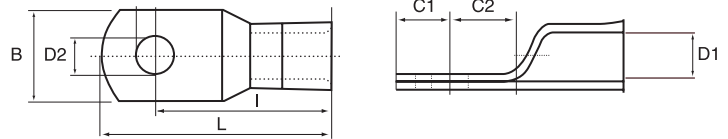
# Non-Plated Tubular Lugs

For Heavy Duty Applications: Trucks, Buses, Forklifts, Automotive, Industrial Equipment

Annealed Terminals for easy crimping

Seamless Barrels for Secure and Accurate Crimp

Made from High Quality Copper : 110 Cu ASTM B152



Lever tool for crimping tubular lugs #115

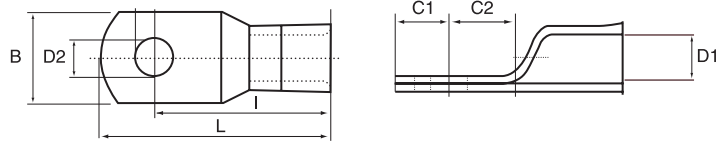
HOFFMAN PART NO.	WIRE SIZE AWG	STUD SIZE (INCH)	DIMENSIONS (INCHES)						
			D1	D2	B	C1	C2	I	L
1700R2	8	10	0.19	0.21	0.44	0.24	0.38	0.98	1.22
1701R2	8	1/4	0.19	0.28	0.44	0.24	0.38	0.98	1.22
1702R2	8	5/16	0.19	0.34	0.44	0.24	0.38	0.98	1.22
1703R2	8	3/8	0.19	0.40	0.44	0.24	0.38	0.98	1.22
1704R2	8	1/2	0.19	0.52	0.44	0.24	0.38	0.98	1.22
1600R2	6	10	0.23	0.21	0.44	0.24	0.35	1.04	1.28
1601R2	6	1/4	0.23	0.28	0.44	0.24	0.35	1.04	1.28
1602R2	6	5/16	0.23	0.34	0.44	0.24	0.35	1.04	1.28
1603R2	6	3/8	0.23	0.40	0.44	0.24	0.35	1.04	1.28
1604R2	6	1/2	0.23	0.52	0.44	0.24	0.35	1.04	0.13
1590R2	4	10	0.29	0.21	0.53	0.28	0.43	1.22	1.50
1591R2	4	1/4	0.29	0.28	0.53	0.28	0.43	1.22	1.50
1592R2	4	5/16	0.29	0.34	0.53	0.28	0.43	1.22	1.50
1593R2	4	3/8	0.29	0.40	0.53	0.28	0.43	1.22	1.50
1594R2	4	1/2	0.29	0.52	0.53	0.28	0.43	1.22	1.50
1580R2	2	1/4	0.33	0.28	0.62	0.33	0.43	1.31	1.63
1581R2	2	5/16	0.33	0.34	0.62	0.33	0.43	1.31	1.63
1582R2	2	3/8	0.33	0.40	0.62	0.33	0.43	1.31	1.63
1583R2	2	1/2	0.33	0.52	0.62	0.33	0.43	1.31	1.63
1560R2	1	1/4	0.36	0.28	0.66	0.33	0.44	1.40	1.73
1561R2	1	5/16	0.36	0.34	0.66	0.33	0.44	1.40	1.73
1562R2	1	3/8	0.36	0.40	0.66	0.33	0.44	1.40	1.73
1563R2	1	1/2	0.36	0.52	0.66	0.33	0.44	1.40	1.73
1550R2	1/0	1/4	0.40	0.28	0.72	0.39	0.46	1.46	1.84
1551R2	1/0	5/16	0.40	0.34	0.72	0.39	0.46	1.46	1.84
1552R2	1/0	3/8	0.40	0.40	0.72	0.39	0.46	1.46	1.84
1553R2	1/0	1/2	0.40	0.52	0.72	0.39	0.46	1.46	1.84
1540R2	2/0	1/4	0.46	0.28	0.81	0.41	0.53	1.65	2.07
1541R2	2/0	5/16	0.46	0.34	0.81	0.41	0.53	1.65	2.07
1542R2	2/0	3/8	0.46	0.40	0.81	0.41	0.53	1.65	2.07
1543R2	2/0	1/2	0.46	0.52	0.81	0.41	0.53	1.65	2.07
1530R2	3/0	1/4	0.51	0.28	0.91	0.46	0.51	1.68	2.15
1531R2	3/0	5/16	0.51	0.34	0.91	0.46	0.51	1.68	2.15
1532R2	3/0	3/8	0.51	0.40	0.91	0.46	0.51	1.68	2.15
1533R2	3/0	1/2	0.51	0.52	0.91	0.46	0.51	1.68	2.15
1521R2	4/0	5/16	0.56	0.34	0.98	0.50	0.55	1.83	2.33
1522R2	4/0	3/8	0.56	0.40	0.98	0.50	0.55	1.83	2.33
1523R2	4/0	1/2	0.56	0.52	0.98	0.50	0.55	1.83	2.33

For tin plated add **T** to the part number, **1521TR2**, for sight hole add **S** to the end of the part number, **1521R2S**.



## UL Certified, Non-Plated Tubular Lugs

Lever tool for crimping tubular lugs #115



HOFFMAN PART NO.	WIRE SIZE AWG	STUD SIZE (INCH)	DIMENSIONS (INCHES)							UL
			D1	D2	B	C1	C2	I	L	
1700	8	10	0.185	0.196	0.445	0.235	0.344	0.965	1.200	Y
1701	8	1/4	0.185	0.265	0.445	0.235	0.344	0.965	1.200	Y
1702	8	5/16	0.185	0.328	0.445	0.235	0.406	0.965	1.200	Y
1600	6	10	0.232	0.196	0.445	0.235	0.344	1.175	1.410	Y
1601	6	1/4	0.232	0.265	0.445	0.235	0.344	1.175	1.410	Y
1602	6	5/16	0.232	0.328	0.445	0.235	0.406	1.175	1.410	Y
1603	6	3/8	0.232	0.390	0.765	0.395	0.406	1.155	1.550	Y
1590	4	10	0.286	0.196	0.525	0.275	0.406	1.225	1.500	Y
1591	4	1/4	0.286	0.265	0.525	0.275	0.406	1.225	1.500	Y
1592	4	5/16	0.286	0.328	0.525	0.275	0.406	1.225	1.500	Y
1593	4	3/8	0.286	0.390	0.525	0.275	0.406	1.225	1.500	Y
1580	2	1/4	0.336	0.265	0.615	0.325	0.406	1.295	1.620	Y
1581	2	5/16	0.336	0.328	0.615	0.325	0.406	1.295	1.620	Y
1582	2	3/8	0.336	0.390	0.615	0.325	0.406	1.295	1.620	Y
1583	2	1/2	0.336	0.515	0.755	0.395	0.406	1.355	1.750	Y
1560	1	1/4	0.360	0.265	0.655	0.335	0.406	1.385	1.720	Y
1561	1	5/16	0.360	0.328	0.655	0.335	0.406	1.385	1.720	Y
1562	1	3/8	0.360	0.390	0.655	0.335	0.406	1.385	1.720	Y
1563	1	1/2	0.360	0.515	0.655	0.335	0.468	1.385	1.720	Y
1550	1/0	1/4	0.407	0.265	0.725	0.385	0.406	1.445	1.830	Y
1551	1/0	5/16	0.407	0.328	0.725	0.385	0.406	1.445	1.830	Y
1552	1/0	3/8	0.407	0.390	0.725	0.385	0.406	1.445	1.830	Y
1553	1/0	1/2	0.407	0.515	0.725	0.385	0.406	1.445	1.830	Y
1540	2/0	1/4	0.461	0.265	0.815	0.425	0.500	1.635	2.060	Y
1541	2/0	5/16	0.461	0.328	0.815	0.425	0.500	1.635	2.060	Y
1542	2/0	3/8	0.461	0.390	0.815	0.425	0.500	1.635	2.060	Y
1543	2/0	1/2	0.461	0.515	0.815	0.425	0.500	1.635	2.060	Y
1530	3/0	1/4	0.511	0.265	0.895	0.465	0.500	1.695	2.160	Y
1531	3/0	5/16	0.511	0.328	0.895	0.465	0.500	1.695	2.160	Y
1532	3/0	3/8	0.511	0.390	0.895	0.465	0.500	1.695	2.160	Y
1533	3/0	1/2	0.511	0.515	0.895	0.465	0.500	1.695	2.160	Y
1521	4/0	5/16	0.559	0.328	0.985	0.505	0.546	1.845	2.350	Y
1522	4/0	3/8	0.559	0.390	0.985	0.505	0.546	1.845	2.350	Y
1523	4/0	1/2	0.559	0.515	0.985	0.505	0.546	1.845	2.350	Y

For tin plated add **T** at the end of the part number, **1521T**

