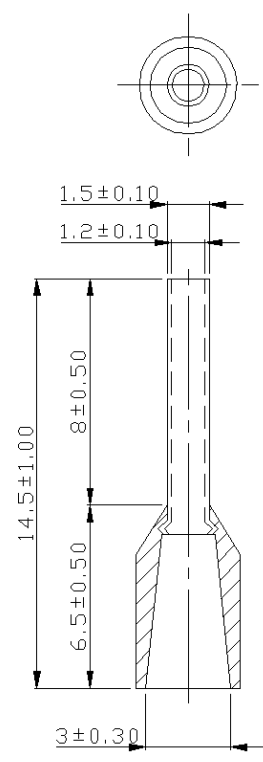


A B C D E F G H

REV	DESCRIPTION	DATE
-----	-------------	------



- NOTE:
1. MAXIMUM ELECTRIC CURRENT :

A.W.G.	20
AMP.	12
 2. MAXIMUM ELECTRICAL RATING : 105°C 600 VOLTS MAX.
 3. INSULATION MATERIAL : NYLON
 4. INSULATION COLOR :
FRENCH COLOR : BLUE
GERMAN COLOR : WHITE
DIN COLOR : GREY
 5. CONNECTOR MATERIAL : COPPER TUBE.
 6. WIRE RANGE : 20 A.W.G.(0.75 mm²)

Tolerance Unless Otherwise Specified	
0 > 6 mm ±0.20	ANGLE
6 > 18 mm ±0.30	0° REF ±
18 > 30 mm ±0.40	° ±
30 > 75 mm ±0.50	° ±

NAME	NYLON-INSULATED CORD END TERMINALS (E SERIES)	UNIT	mm	
PART NO.	E7508-L	MATERIAL	-----	APPROVE 张馨尹
NUMBER	KA-95412-C	SCALE	SHEET PAGE	CHECKED
DATE	2006/05/10	5/1	1-0	10F1
				DRAWN 张馨尹

KST® K.S. TERMINALS INC.

A B C D E F G H