

4

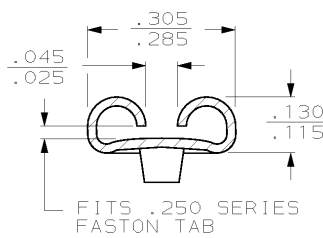
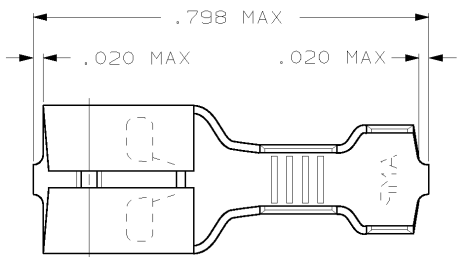
3

2

1

THIS DRAWING IS UNPUBLISHED. RELEASED FOR PUBLICATION
 © COPYRIGHT 19 BY AMP INCORPORATED. ALL RIGHTS RESERVED.

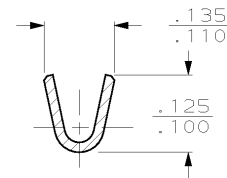
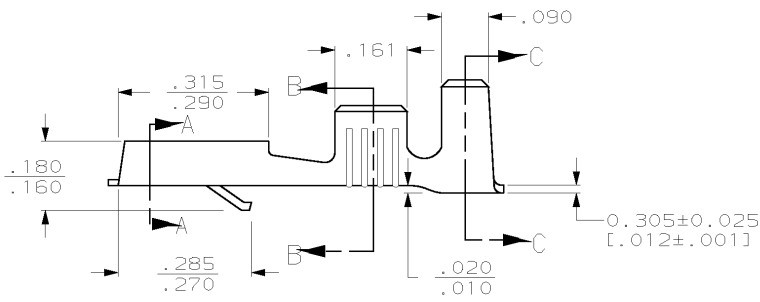
LOC	DIST	REVISIONS				
P	LTR	DESCRIPTION	DATE	DWN	APVD	
AF	50					
	B	REDRAWN PER 0L10-0025-98	1/29/98	JR	JH	



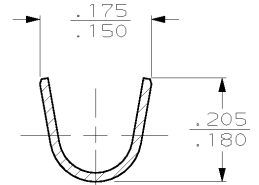
FITS .250 SERIES FASTON TAB

SECTION A-A

- 1 - SUPPLIED IN LOOSE PIECE
- ② - FOREIGN PRODUCTION ONLY
- 3 - WIRE SIZE IS #22-#18 AWG.
- 4 - MATING TAB THK IS .032±.001.
- 5 - INSULATION RANGE IS .085-.125 DIA.



SECTION B-B



SECTION C-C

60838-1 (60295-2 L.P.)	② 60838-1
COMBINATION NUMBER	PART NO.
AMP AMP Incorporated Harrisburg, PA 17105-3608	
RECEPTACLE, FASTIN-FASTON, .250 SERIES	
SIZE	CAGE CODE DRAWING NO
A3100779	② 60838
CUSTOMER DRAWING	RESTRICTED TO
SCALE 5:1	SHEET 1 OF 1 REV B

THIS DRAWING IS A CONTROLLED DOCUMENT.	
DIMENSIONS:	TOLERANCES UNLESS OTHERWISE SPECIFIED:
INCHES	
0 PLC	±.015
1 PLC	±.015
2 PLC	±.015
3 PLC	±.015
4 PLC	±.015
ANGLES	±.015
MATERIAL BRASS	FINISH TIN

DWN	JR RUTH	1/29/98
CHK	MS FEHER	1/29/98
APVD	J HUZVAR	1/29/98
NAME		
PRODUCT SPEC		
APPLICATION SPEC		
WEIGHT		