

# 3M

# Scotchlok™

## Self-Stripping Electrical Tap Connectors

# 562

Part No. **-11040**  
054007



---

# 1000 Insulated Connectors

UL LISTED as a pressure wire connector.

**OPERATING TEMPERATURE:** 90° C maximum.

**VOLTAGE RATING:** 600 Volts maximum, building wire.  
1000 Volts maximum in signs, fixtures or luminaries.  
**Insulated copper conductors only.**

**WIRE RANGE:** 12 AWG solid or stranded, 10 AWG stranded  
(4,0 mm<sup>2</sup> solid or stranded).  
Maximum wire insulation O.D.:  
0.190 in. (4,82 mm).

Recommended for common thermoplastic-insulated wire such as vinyl.

**IMPORTANT NOTICE:** Before using this product, you must evaluate it and determine if it is suitable for your intended application. You assume all risks and liability associated with such use.

**Warranty; Limited Remedy; Limited Liability.**

This product will be free from defects in material and manufacture at the time of purchase. **3M MAKES NO OTHER WARRANTIES INCLUDING, BUT NOT LIMITED TO, ANY IMPLIED WARRANTY OF MERCHANTABILITY OR FITNESS FOR A PARTICULAR PURPOSE.** If this product is defective within the warranty period stated above, your exclusive remedy shall be, at 3M's option, to replace or repair the 3M product or refund the purchase price of the 3M product. **Except where prohibited by law, 3M will not be liable for any indirect, special, incidental or consequential loss or damage arising from this 3M product, regardless of the legal theory asserted.**

3M and Scotchlok are trademarks of 3M Company. Used under license in Canada.

**3M Electrical Markets Division**

Austin, TX 78726-9000  
Made in U.S.A.

78-8126-6729-9

# 3M Scotchlok™ Self-Stripping Electrical Tap Connectors 562

Part No. **-11040**  
054007

---

**1000** Insulated Connectors

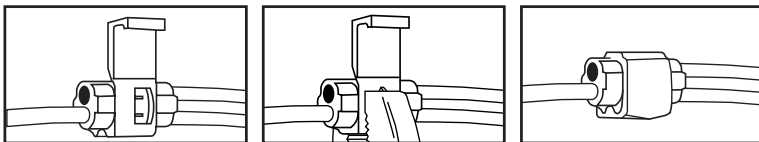
## **WARNING**

Turn power off before installing or removing terminal or connector.  
All work should be done according to appropriate electrical codes.

### **Installation Instructions**

Use only with insulated copper wire. Do not strip insulation. Recommended Tool: 9" lineman's pliers.

### **Tap Connections**



### **Double Run Connections**

