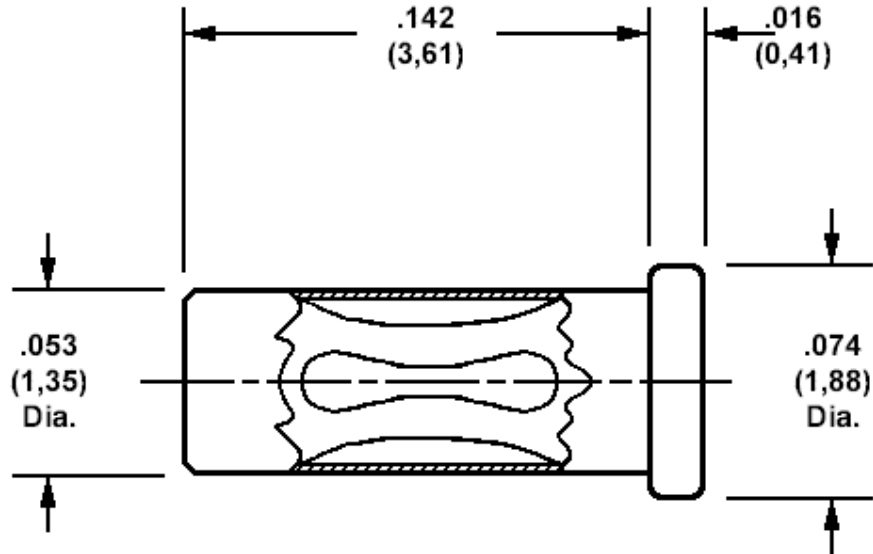


### 450-3703 Solder mount socket, for .025 (0,64) diameter pins

Recommended mounting hole .055 (1,40) ± .002 (0,05), #54 drill



Min hole depth .141 (3,58)

How to order code  
**450-3703-01-XX-00**  
 Basic Part No XX = Finish

| MATERIALS |                  |                  |             |                  |
|-----------|------------------|------------------|-------------|------------------|
| Component | Material         | Finish(-03)      | Finish(-04) | Finish(-06)      |
| Body      | Copper           | Gold over Nickel | Tin         | Tin              |
| Spring    | Beryllium copper | Gold over Nickel | Tin         | Gold over Nickel |