

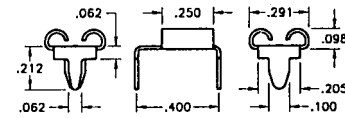
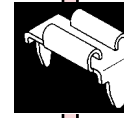
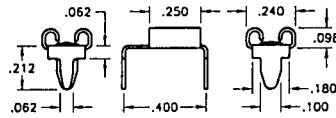
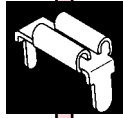
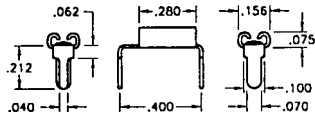


Designers' Choice

PC QUICK-FIT TERMINALS

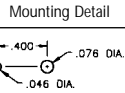
.110 / .187 / .205 / .250 PC QUICK-FIT FEMALE TYPES

.110 HORIZONTAL



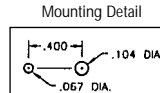
MATERIAL:
.012 Brass, Nickel Plate

CAT. NO.	ACCEPTS TAB
3545	.110 × .020
3549	.110 × .032



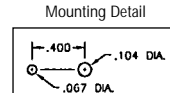
MATERIAL:
.012 Brass, Nickel Plate

CAT. NO.	ACCEPTS TAB
3546	.205 × .020
3550	.205 × .025
	.205 × .032

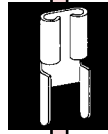
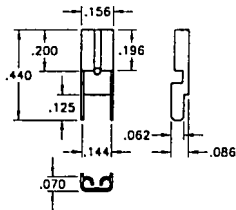


MATERIAL:
.016 Brass, Nickel Plate

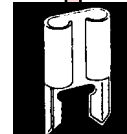
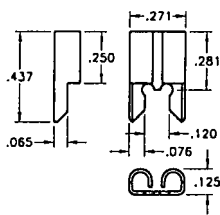
CAT. NO.	ACCEPTS TAB
3547	.250 × .032



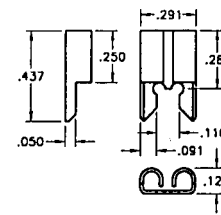
.110 VERTICAL



.205 VERTICAL

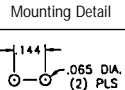


.250 VERTICAL



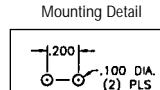
MATERIAL:
.012 Brass, Nickel Plate

CAT. NO.	ACCEPTS TAB
3534	.110 × .020
3544	.110 × .032



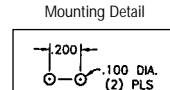
MATERIAL: Brass, Nickel Plate

CAT. NO.	ACCEPTS TAB	MAT'L THICK
3525	.205 × .020	.012
3522	.205 × .025	.016
	.205 × .032	.016

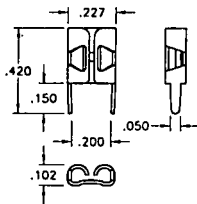


MATERIAL:
.016 Brass, Nickel Plate

CAT. NO.	ACCEPTS TAB
3528	.250 × .032

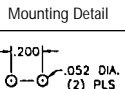


.187 VERTICAL

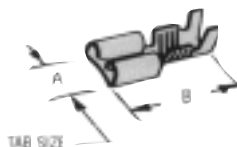


MATERIAL:
.016 Brass, Nickel Plate

CAT. NO.	ACCEPTS TAB
3548	.187 × .020
3551	.187 × .032



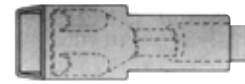
QUICK-FIT FEMALES



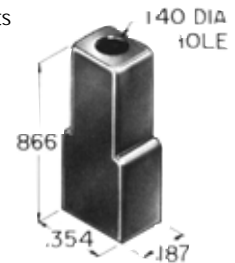
MATERIAL: Tinned Brass

CAT. NO.	A DIM TAB SIZE	B DIM LENGTH	AWG SIZE	MAT'L THICK
1252	.110 × .020	.640	18-22	.010
1264	.187 × .020	.576	16-22	.013
4469	.205 × .020	.640	16-20	.013
4470	.250 × .032	.750	16-20	.016

.250 QUICK-FIT VINYL BOOT



- Easily slips over terminal
- Insulated and protects

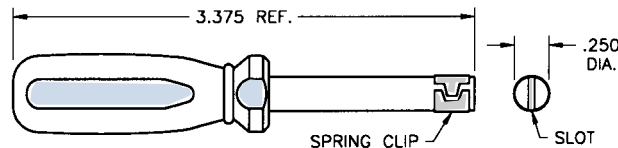


CAT. NO.	BOOT COLOR
4471	CLEAR
4472	RED
4473	BLUE
4474	YELLOW

MALE "QUICK-FIT" INSERTION TOOL

Designed to install .250 male "Quick-Fit" terminals quickly and easily

- Insert terminal into slot, spring clip will hold terminal securely for positioning
- Align terminal with mounting holes and "press-fit" to secure firmly in place
- Lift tool to release terminal



CAT. NO. 1288