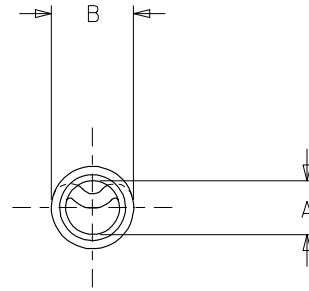
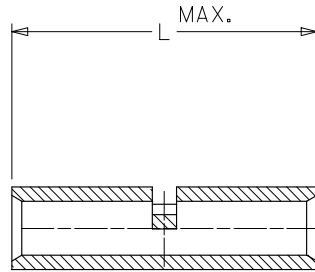
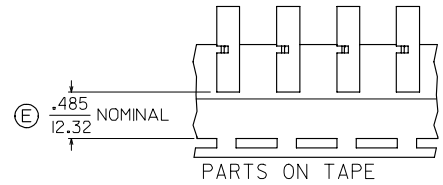


MATERIAL NO.	ENGINEERING NO.	"L" MAX	"A" MIN [ⓔ]	"B" MAX	PACKAGING
192150028	CS-346	.827/21.00	.139/3.53	.223/5.66	LOOSE
192150132	CS-352	.595/15.11	.139/3.53	.223/5.66	PIECE
192150030	CS-346T	.827/21.00	.139/3.53	.223/5.66	TAPE MOUNTED
192150252	CS-346US	.827/21.00	.139/3.53	.223/5.66	LOOSE PIECE
192150256	CS-346UST	.827/21.00	.139/3.53	.223/5.66	TAPE MOUNTED



SALES DRAWING

- NOTES:
 1. MATERIAL: COPPER.
 2. PLATING: ELECTRO-TIN.
 3. ALL DIMENSIONS IN INCHES/ MM.
 4. PART IS ROHS COMPLIANT.

CORRECTED DIM. & ADDED ROHS EC NO: ETC2007-0397 DRAWN BY: DRVINHEILLE 2007/04/27 CHKD: JMACNEIL 2007/05/09 APPR: JMACNEIL 2007/05/10	QUALITY SYMBOLS	GENERAL TOLERANCES (UNLESS SPECIFIED)		DIMENSION STYLE	SCALE	DESIGN UNITS	THIRD ANGLE PROJECTION
	$\nabla=0$ $\sphericalangle=0$	mm	INCH	IN/MM	INCH		
REV	DESCRIPTION	4 PLACES	± --- ± ---	DRAWN BY	DATE	TITLE	
		3 PLACES	± --- ± ---	JLOMASTRO	05/01/07	BUTT CONNECTOR SEAMLESS	
		2 PLACES	± --- ± ---	CHECKED BY	DATE	12-10 AWG WIRE SIZE	
		1 PLACE	± --- ± ---	RDEROSS	05/01/07	MOLEX INCORPORATED	
		ANGULAR	± --- °	APPROVED BY	DATE	MATERIAL NO.	DOCUMENT NO.
				RDEROSS	05/01/07	SEE CHART	SD-19215-003
		DRAFT WHERE APPLICABLE MUST REMAIN WITHIN DIMENSIONS		SIZE	THIS DRAWING CONTAINS INFORMATION THAT IS PROPRIETARY TO MOLEX INCORPORATED AND SHOULD NOT BE USED WITHOUT WRITTEN PERMISSION		
				B	SHEET NO. 1 OF 1		