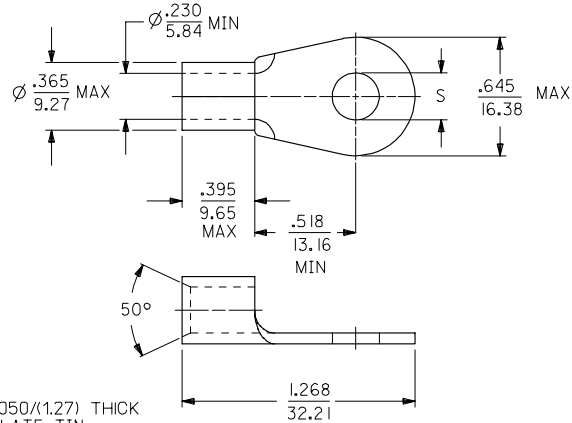
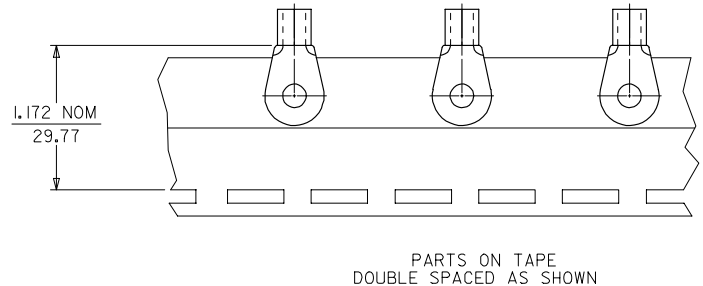


MATERIAL NUMBER	ENGINEERING NUMBER	STUD SIZE	*S*	PACKAGING
191930206	E-357-08	8	.173/(4.39)	LOOSE PIECE
191930209	E-357-10	10	.198/(5.02)	
191930212	E-357-14	1/4	.265/(6.73)	
191930219	E-357-56	5/16	.328/(8.33)	
191930216	E-357-38	3/8	.390/(9.90)	
191930223	E-357-76	7/16	.453/(11.50)	TAPE MOUNTED
191930208	E-357-08T	8	.173/(4.39)	
191930211	E-357-10T	10	.198/(5.02)	
191930215	E-357-14T	1/4	.265/(6.73)	
191930222	E-357-56T	5/16	.328/(8.33)	
191930218	E-357-38T	3/8	.390/(9.90)	
191930224	E-357-76T	7/16	.453/(11.50)	



- NOTE(S):
- ① MATERIAL: COPPER .050/(1.27) THICK
 - ② PLATING: ELECTROPLATE TIN
 - ③ ALL DIMENSIONS IN INCHES/(MM).
 - ④ WIRE SIZE: 6 AWG
16 MM²
 - ⑤ PART IS ROHS COMPLIANT.

SALES DRAWING

REVISED MATL THKNS EC NO: ETC2007-0011 DRAWN/HILLE 2006/07/12 CHKD: MACNELL 2006/07/13 APPR: BERROSS 2006/07/17	QUALITY SYMBOLS	GENERAL TOLERANCES (UNLESS SPECIFIED)	DIMENSION STYLE IN/MM	SCALE ---	DESIGN UNITS INCH	THIRD ANGLE PROJECTION
	▽=0 ▽=0	4 PLACES ± --- ± --- 3 PLACES ± --- ± .005 2 PLACES ± 0.13 ± .01 1 PLACE ± 0.25 ± --- ANGULAR ±1/2°	DRAWN BY EDB DATE 2000/11/01 CHECKED BY HEB DATE 2000/11/01 APPROVED BY RWD DATE 2000/11/01	TITLE	RING TONGUE TERMINAL VERSÄKRIMP 6 AWG	
	DRAFT WHERE APPLICABLE MUST REMAIN WITHIN DIMENSIONS	MATERIAL NO.	DOCUMENT NO.	MOLEX INCORPORATED		
	SEE CHART	SD-19193-015	1 OF 1			