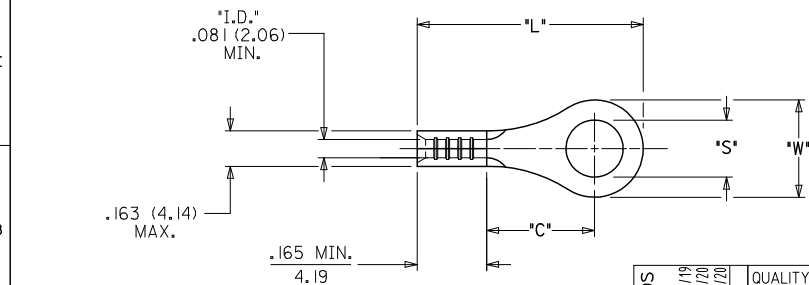
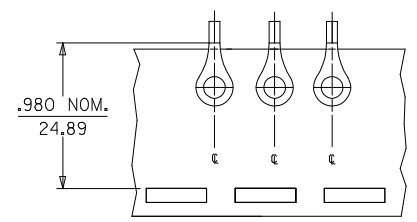
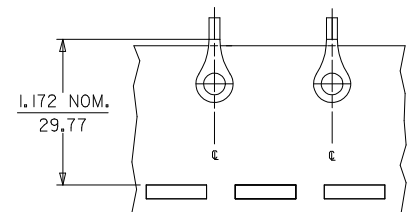


| MATERIAL NO.<br>LOOSE PIECE | ENG. NO.  | MATERIAL NO.<br>TAPE MOUNTED | ENG. NO.   | STUD<br>SIZE | ±.003<br>"S" | "W"<br>MAX.  | "C"<br>MIN.  | "L"<br>MAX.   |
|-----------------------------|-----------|------------------------------|------------|--------------|--------------|--------------|--------------|---------------|
| 190690091                   | BB-118-10 | -----                        | -----      | 10           | .198 (5.03)  |              |              |               |
| 190690092                   | BB-118-14 | 190690133                    | BB-118-14T | 14           | .265 (6.73)  |              |              |               |
| 190690093                   | BB-118-38 | 190690094                    | BB-118-38T | 38 (A1)      | .390 (9.91)  | .544 (13.82) | .535 (13.59) | 1.010 (25.65) |
| 190690096                   | BB-118-56 | 190690097                    | BB-118-56T | 56 (A1)      | .328 (8.33)  |              |              |               |
| 190690098                   | BB-123-02 | 190690134                    | BB-123-02T | 2            | .094 (2.39)  |              |              |               |
| 190690099                   | BB-123-04 | 190690100                    | BB-123-04T | 4            | .119 (3.02)  | .260 (6.60)  | .209 (5.31)  | .560 (14.22)  |
| 190690101                   | BB-123-06 | 190690102                    | BB-123-06T | 6            | .146 (3.71)  |              |              |               |
| 190690103                   | BB-123-08 | 190690104                    | BB-123-08T | 8            | .173 (4.39)  |              |              |               |
| 190690105                   | BB-125-10 | 190690106                    | BB-125-10T | 10           | .198 (5.03)  |              |              |               |
| 190690107                   | BB-125-14 | 190690108                    | BB-125-14T | 14           | .265 (6.73)  | .477 (12.11) | .388 (9.86)  | .837 (21.26)  |
| 190690109                   | BB-125-56 | 190690110                    | BB-125-56T | 56           | .328 (8.33)  |              |              |               |
| 190690112                   | BB-137-06 | 190690113                    | BB-137-06T | 6            | .146 (3.71)  |              |              |               |
| 190690114                   | BB-137-08 | 190690115                    | BB-137-08T | 8            | .173 (4.39)  | .322 (8.18)  | .275 (6.98)  | .645 (16.38)  |
| 190690116                   | BB-137-10 | 190690117                    | BB-137-10T | 10           | .198 (5.03)  |              |              |               |
| 190690119                   | BB-139-04 | -----                        | -----      | 4            | .119 (3.02)  |              |              |               |
| 190690120                   | BB-139-06 | 190690138                    | BB-139-06T | 6            | .146 (3.71)  | .352 (8.94)  | .305 (7.75)  | .696 (17.68)  |
| 190690121                   | BB-139-08 | 190690122                    | BB-139-08T | 8            | .173 (4.39)  |              |              |               |
| 190690123                   | BB-139-10 | 190690124                    | BB-139-10T | 10           | .198 (5.03)  |              |              |               |



- NOTE(S):**
- MATERIAL: COPPER (.031/0.79 THICK)  
PLATING: ELECTROPLATE TIN
  - WIRE SIZE: 16-14 AWG  
1.0 - 2.5 MM<sup>2</sup>
  - PARTS ARE ROHS COMPLIANT.

FIX SWAPPED STUDS  
 EC NO: WNAZ009-0338  
 DRAWN: THRODAHL 2008/11/20  
 CHKD: JACONEIL 2008/11/20  
 APPR: JACONEIL 2008/11/20

QUALITY SYMBOLS  
 ▽=0  
 ▽=0

| GENERAL TOLERANCES (UNLESS SPECIFIED) |              |
|---------------------------------------|--------------|
| mm                                    | INCH         |
| 4 PLACES ± --- ± ---                  | ± --- ± ---  |
| 3 PLACES ± --- ± .005                 | ± --- ± .005 |
| 2 PLACES ± 0.13 ± .01                 | ± --- ± .01  |
| 1 PLACE ± 0.25 ± ---                  | ± --- ± ---  |
| ANGULAR ± ---°                        |              |

DRAFT WHERE APPLICABLE  
MUST REMAIN WITHIN DIMENSIONS

SALES DRAWING

| DIMENSION STYLE   | SCALE        | DESIGN UNITS                                   | THIRD ANGLE PROJECTION |
|---|--------------|--|------------------------|
| IN/MM   | ---          | INCH   | ☑                      |
| DRAWN BY  | DATE         | TITLE  |                        |
| DLM   | 2003/02/21   | RING TONGUE TERMINAL<br>KRIMPTITE<br>16-14 AWG |                        |
| CHECKED BY  | DATE         | MOLEX INCORPORATED                             |                        |
| SB  | 2003/02/21   | SD-19069-013                                   |                        |
| APPROVED BY   | DATE         | DOCUMENT NO.                                   |                        |
| RWD   | 2003/02/21   | SD-19069-013                                   |                        |
| MATERIAL NO.  | DOCUMENT NO. | SHEET NO.                                      |                        |
| SEE CHART   | SD-19069-013 | 1 OF 1   |                        |
| THIS DRAWING CONTAINS INFORMATION THAT IS PROPRIETARY TO MOLEX INCORPORATED AND SHOULD NOT BE USED WITHOUT WRITTEN PERMISSION |              |  |                        |