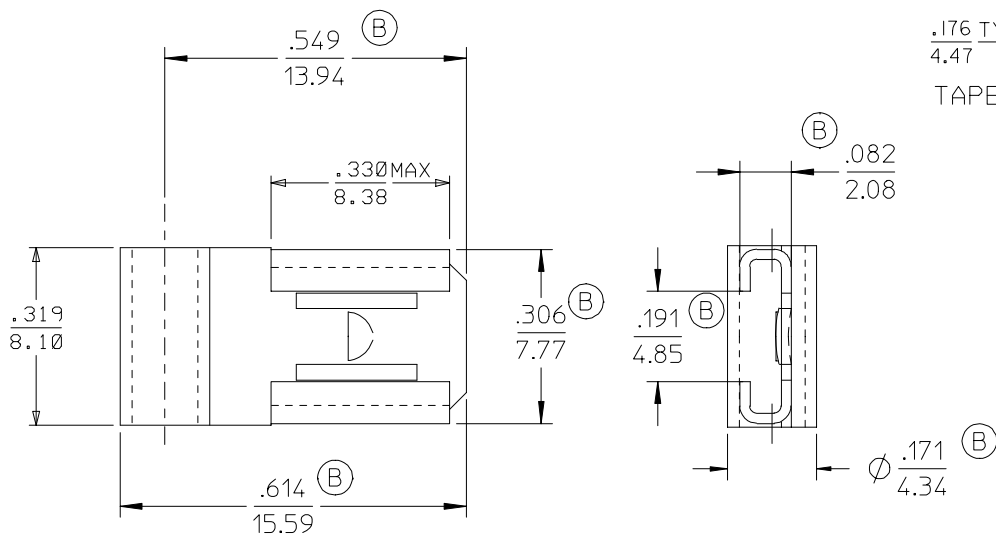
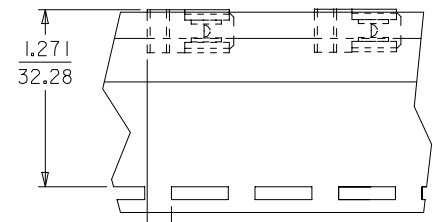


| | | | | | |
|-----------------|--------------------|------------|-------------|---|---|
| 6 | 5 | 4 | 3 | 2 | 1 |
| MATERIAL NUMBER | ENGINEERING NUMBER | PLATING | CARRIER | | |
| I90080062 | B-175P | NON-PLATED | LOOSE PIECE | | |
| I90080038 | B-175 | TIN PLATED | LOOSE PIECE | | |
| I90080039 | B-175T | TIN PLATED | TAPE | | |



SALES DRAWING

- NOTES:
- MATERIAL: BRASS
 - PLATING SEE CHART.
 - RoHS COMPLIANT

| | | | | | | | | | |
|---|-------------------------------|---------------------------------------|-----------------------|--|------------------|--|------------------------------|---------------------|--|
| CORRECT DIM'S EC NO: ETC2007-0146 2006/10/11 DRWN: JLOMASTRO 2006/10/11 CHKD: JMACNEIL 2006/10/11 APPR: JMACNEIL 2006/10/12 | QUALITY SYMBOLS ▽=0 ▽=0 | GENERAL TOLERANCES (UNLESS SPECIFIED) | | DIMENSION STYLE IN/MM | SCALE --- | DESIGN UNITS INCH | THIRD ANGLE PROJECTION | | |
| | | 4 PLACES ± --- ± --- | 3 PLACES ± --- ± .010 | DRAWN BY JLOMASTRO | DATE 10/07/06 | TITLE FLAG UNINSULATED KRIMPTITE 12-14 AWG | | | |
| | | 2 PLACES ± 0.25 ± .010 | 1 PLACE ± 0.3 ± --- | CHECKED BY JMACNEIL | DATE 10/07/06 | MOLEX INCORPORATED | | | |
| | | ANGULAR ± ---° | | APPROVED BY JMACNEIL | DATE 10/07/06 | MATERIAL NO. SEE CHART | DOCUMENT NO. SD-19008-009 | SHEET NO. 1 OF 1 | |
| DRAFT WHERE APPLICABLE MUST REMAIN WITHIN DIMENSIONS | | | | THIS DRAWING CONTAINS INFORMATION THAT IS PROPRIETARY TO MOLEX INCORPORATED AND SHOULD NOT BE USED WITHOUT WRITTEN PERMISSION | | | | | |

tb_frame_A_P_ME_T
Rev. E 2006/04/15