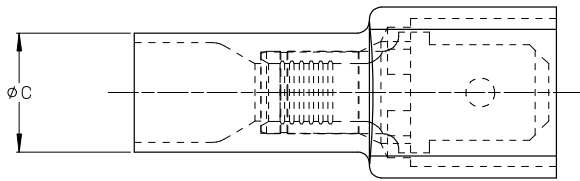
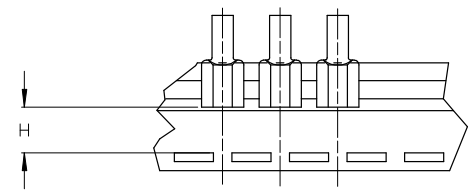


19004

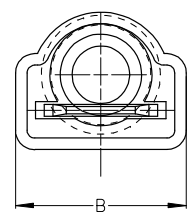
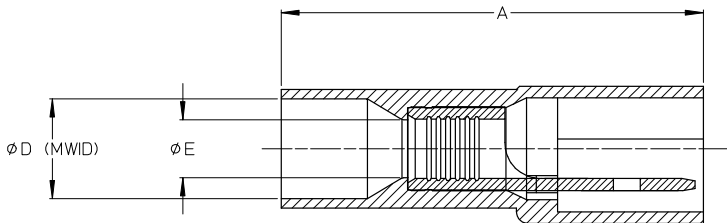
ASSEMBLY NUMBER		TAPE NUMBER		ITEM DESCRIPTION			DIMENSIONS					
MATERIAL NUMBER	ENGINEERING NUMBER	MATERIAL NUMBER	TAPE ENG. NUMBER	COLOR	WIRE GAUGE	TAB SIZE	'A' MAX	'B' MAX	'C' MAX	'D' MIN	'E' MIN	'H' REF
190040009	C-2264	190040012	C-2264T	YELLOW	12-10 AWG (3.09-5.01mm ²)	.250 X .032 (6.35 X 0.81)	1.12/28.4	.46/11.7	.34/8.6	.275/6.99	.145/3.68	.42/10.7



ⓑ SINGLE SPACED, CENTER TO CENTER



TAPE MOUNTING DETAIL



- ⓑ NOTES:
1. TERMINAL MATERIAL: BRASS
 2. TERMINAL PLATING: ZINC CHROMATE
 3. HOUSING: 6/6 NYLON
 4. MWID: MAXIMUM WIRE INSULATION DIAMETER
 5. TAB DIMENSIONS CONFORM TO UL310 SPECIFICATIONS.
 6. ASSEMBLY IS ROHS COMPLIANT

REDRAW. MATERIALS EC NO: ETC2007-0081 DRAWN BY: DRW:MHLE 2008/01/28 CHKD: JMCNEIL 2008/01/28 APPR: JMCNEIL 2008/02/13 REV B	QUALITY SYMBOLS ▽=0 ▽=0	GENERAL TOLERANCES (UNLESS SPECIFIED)		DIMENSION STYLE IN/MM ⓑ	SCALE 4:1	DESIGN UNITS INCH	THIRD ANGLE PROJECTION
		4 PLACES ± --- ± --- 3 PLACES ± --- ± --- 2 PLACES ± --- ± --- 1 PLACE ± --- ± --- ANGULAR ± ---°	DRAWN BY EMF DATE 1993/06/25	CHECKED BY DATE	TITLE FULLY INSULATED MALE COUPLER, INSULKRIMP 12-10	APPROVED BY DATE	MATERIAL NO. SEE CHART
DRAFT WHERE APPLICABLE MUST REMAIN WITHIN DIMENSIONS		THIS DRAWING CONTAINS INFORMATION THAT IS PROPRIETARY TO MOLEX INCORPORATED AND SHOULD NOT BE USED WITHOUT WRITTEN PERMISSION					