

PCB terminal, rising cage clamp system pitch 3.50/3.81 mm

wiecon PCB

Rated cross section:
1.0 mm²

Rated current:
10 A

Wire range:
0.14 – 1.5 mm² single core/
0.14 – 1.0 mm² finely stranded

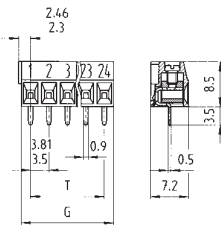
160 V/2.5 kV/3 – overvoltage category III
*250 V/2.5 kV/2 – overvoltage category II
**690 V/2.5 kV/1 – overvoltage category I

* up to 400 V in overvoltage category I
or expected overvoltage ≤ 3 kV for L ≥ 2.0 mm and ≤ 2.5 kV for
2.0 mm > L ≥ 1.5 mm

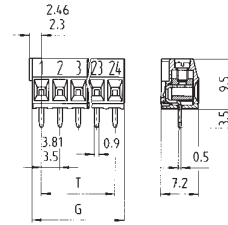
** max. 600 V for non-earthed systems or expected overvoltage ≤
3 kV for L ≥ 2.0 mm and ≤ 2.5 kV for 2.0 mm > L ≥ 1.5 mm

Rated voltages VDE 0110
UL Data
CSA Data
Approvals

without insulating plate



with insulating plate

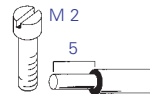


Solder pin 0.5 x 0.9 mm
Drill hole Ø 1.1 mm



Type 8593/8893

Conductor horizontal to PCB



Materials
Insulating housing: PA 66/6 grey,
UL 94-V2
Clamping part: nickel plated brass
Contact and solder pin:
tin plated bronze
Clamping screw: galvanised steel

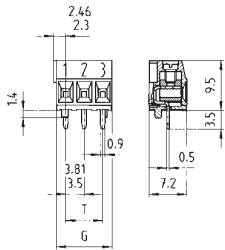
No. 30 – 16 AWG 300 V 10 A
No. 30 – 16 AWG 300 V 10 A



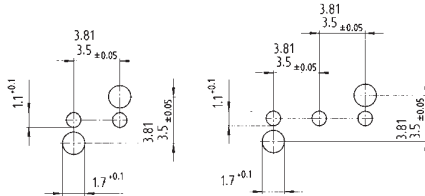
Box Qty	L	T	Pole	Part No.	Part No.	Part No.	Part No.
				unmarked without insulating plate	marked without insulating plate	unmarked with insulating plate with locating cams	marked with insulating plate with locating cams
pitch 3.50 mm							
100	7.0	3.5	2	25.195.0253.0	25.194.0253.0	25.195.9253.0	25.194.9253.0
100	10.5	7.0	3	25.195.0353.0	25.194.0353.0	25.195.9353.0	25.194.9353.0
50	14.0	10.5	4	25.195.0453.0	25.194.0453.0		
50	17.5	14.0	5	25.195.0553.0	25.194.0553.0		
50	21.0	17.5	6	25.195.0653.0	25.194.0653.0		
50	24.5	21.0	7	25.195.0753.0	25.194.0753.0		
50	28.0	24.5	8	25.195.0853.0	25.194.0853.0		
50	31.5	28.0	9	25.195.0953.0	25.194.0953.0		
50	35.0	31.5	10	25.195.1053.0	25.194.1053.0		
50	38.5	35.0	11	25.195.1153.0	25.194.1153.0		
50	42.0	38.5	12	25.195.1253.0	25.194.1253.0		
50	45.5	42.0	13	25.195.1353.0	25.194.1353.0		
50	49.0	45.5	14	25.195.1453.0	25.194.1453.0		
50	52.5	49.0	15	25.195.1553.0	25.194.1553.0		
50	56.0	52.5	16	25.195.1653.0	25.194.1653.0		
17 to 24 pole on request							
				unmarked without insulating plate	marked without insulating plate	unmarked with insulating plate with locating cams	marked with insulating plate with locating cams
pitch 3.81 mm							
100	7.62	3.81	2	25.197.0253.0	25.196.0253.0	25.197.9253.0	25.196.9253.0
100	11.43	7.62	3	25.197.0353.0	25.196.0353.0	25.197.9353.0	25.196.9353.0
50	15.24	11.43	4	25.197.0453.0	25.196.0453.0		
50	19.50	15.24	5	25.197.0553.0	25.196.0553.0		
50	22.86	19.05	6	25.197.0653.0	25.196.0653.0		
50	26.67	22.86	7	25.197.0753.0	25.196.0753.0		
50	30.48	26.67	8	25.197.0853.0	25.196.0853.0		
50	34.29	30.48	9	25.197.0953.0	25.196.0953.0		
50	38.10	34.29	10	25.197.1053.0	25.196.1053.0		
50	41.91	38.10	11	25.197.1153.0	25.196.1153.0		
50	45.72	41.91	12	25.197.1253.0	25.196.1253.0		
50	49.53	45.72	13	25.197.1353.0	25.196.1353.0		
50	53.34	49.53	14	25.197.1453.0	25.196.1453.0		
50	57.15	53.34	15	25.197.1553.0	25.196.1553.0		
50	60.96	57.15	16	25.197.1653.0	25.196.1653.0		
17 to 24 pole on request							

wiecon

with insulating plate and locating cams



Drilling plan for version with locating cams



Part No.	Part No.
unmarked with insulating plate without locating cams	marked with insulating plate without locating cams
on request	on request
unmarked with insulating plate without locating cams	marked with insulating plate without locating cams
on request	on request