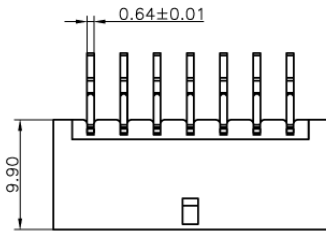
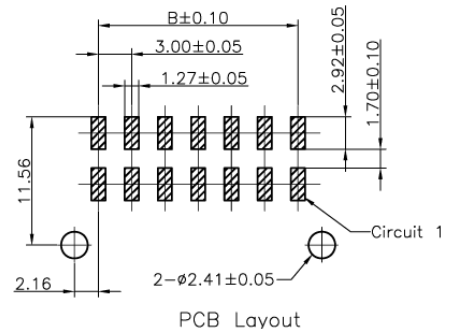
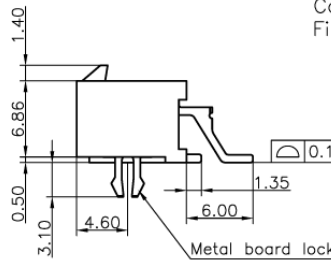
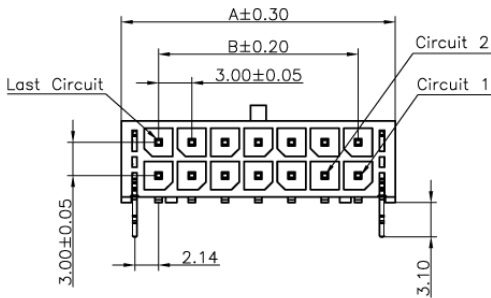
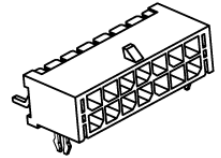


This document is the property of Amphenol Corporation and is delivered on the express condition that it is not to be disclosed, reproduced or used, in whole or in part, for the manufacture or sale by anyone other than Amphenol Corporation without its prior consent, and that no right is granted to disclose or to use any information in this document.



Specifications:

Current Rating:5.0A AC/DC
 Voltage Rating:250V AC/DC
 Contact Resistance:10m ohm. Max.
 Insulation Resistance:1000M ohm. Min.
 Withstanding Voltage:1500V AC/minute
 Operating Temperature Range:-25°C ~ +105°C
 Material and Finish
 Insulator:High Temp. Plastic (Nylon 46 UL94V-0)
 Insulator Color:Black
 Contact:Copper Alloy
 Finish:Tin Plated



Circuits	Dimension		Circuits	Dimension	
	A	B		A	B
2	6.7	—	14	24.7	18.0
4	9.7	3.0	16	27.7	21.0
6	12.7	6.0	18	30.7	24.0
8	15.7	9.0	20	33.7	27.0
10	18.7	12.0	22	36.7	30.0
12	21.7	15.0	24	39.7	33.0

TOLERANCE (mm)	APPROVALS	DATE	TITLE	AMPHENOL	
X. ±0.3	DRAWN Stephane	06/Jun/2007	3.0mm Power Connector Side Entry SMT	Amphenol European Design Center	
XX ±0.2	CHECKED Rob	06/Jun/2007		Scale N.A.	Sheet 1 of 1
XXX ±0.15	APPROVED Rob	06/Jun/2007			
UNLESS OTHERWISE SPECIFIED	UNIT: mm		SIZE: A4	DRAWING N° MF30-SHC1-XX	REV: A